



JACKSON COUNTY
Michigan

MCDEVITT AVENUE ROADWAY RECONSTRUCTION

Fleis & VandenBrink Engineering &
Jackson County Department of Transportation





AGENDA

- Introduction
- Project Purpose
- Project Limits
- Traffic Analysis
- Roadway Improvements
- Utility Upgrades
- Intersection Improvements
- Pedestrian Crossings
- Corridor Beautification
- Discussion & Questions

INTRODUCTIONS

Jackson County Department of Transportation (JC DOT):

- Christopher J. Bolt, MPA, PE
Managing Director
- Corey A. Clevenger, MS, PE
Senior Civil Engineer
- Jim Cole
Project Manager



Fleis & VandenBrink

- Jeff Wingard, PE – Project Manager
- Tyler Sutkowi, PE – Project Engineer
- Julie Kroll, PE, PTOE – Senior Traffic Engineer
- Rick Stout, LLA, LEED AP BD+C – Landscape Architect

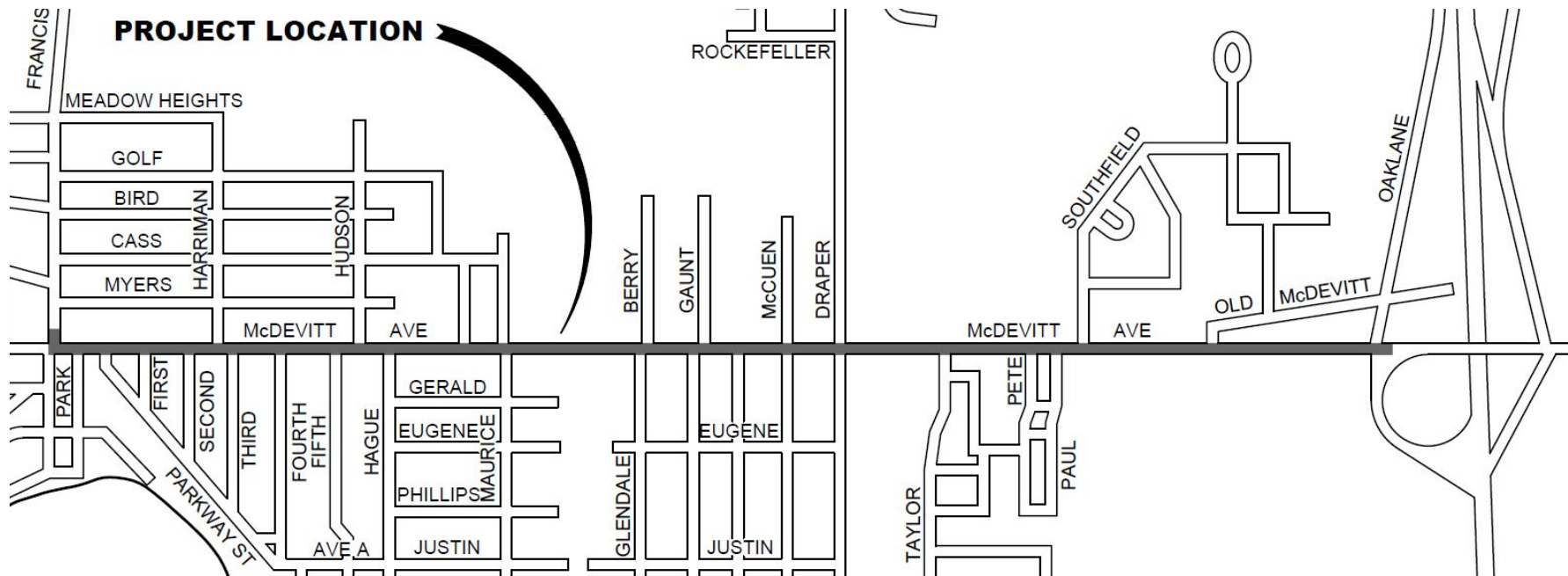


PROJECT PURPOSE

- Special grant funding administered by the Michigan Department of Talent and Economic Development
 - Hon. Mike Shirkey
Senate Majority Leader
- Heavily deteriorated roadway (12,000 vpd)
- Provide a safe means of travel for vehicles, pedestrian, and non-motorized traffic
- Improve aesthetics along the corridor – community gateway

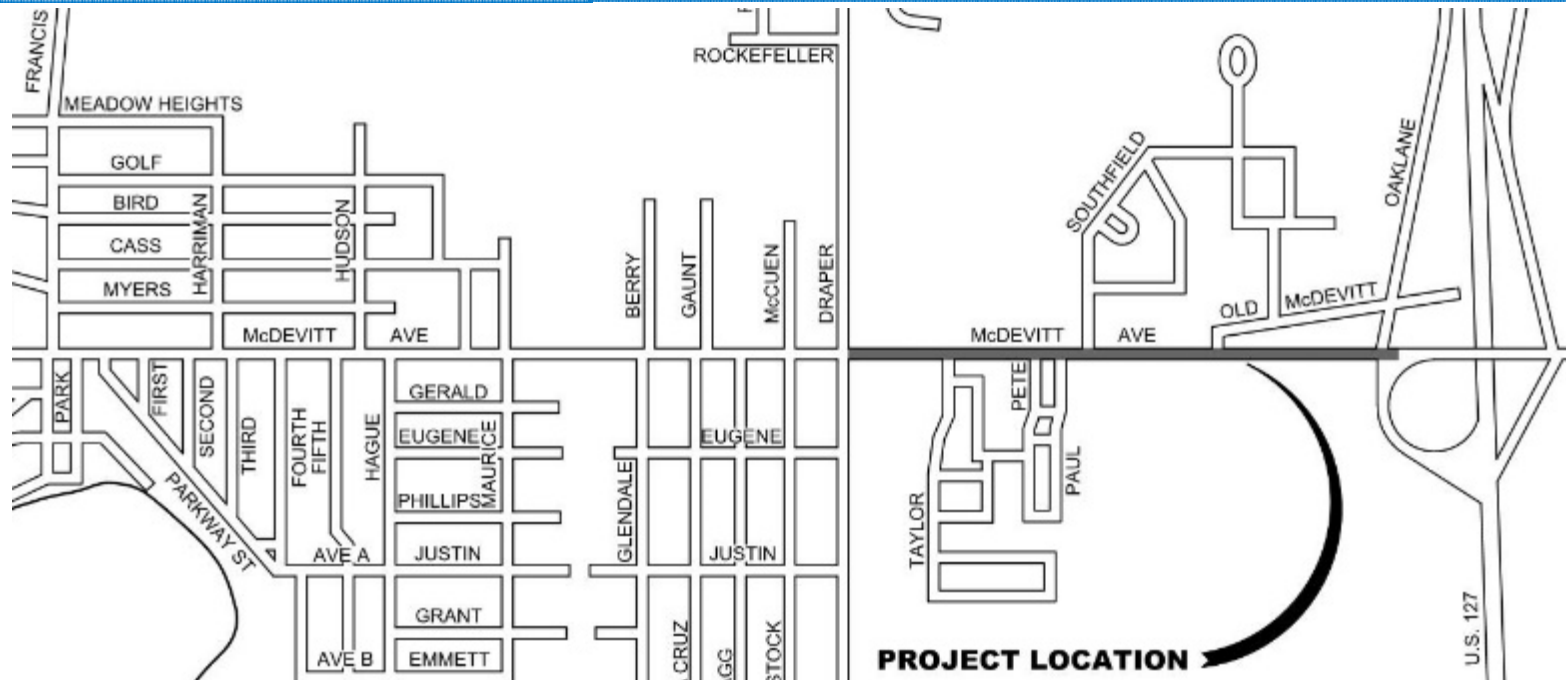


PROJECT LIMITS



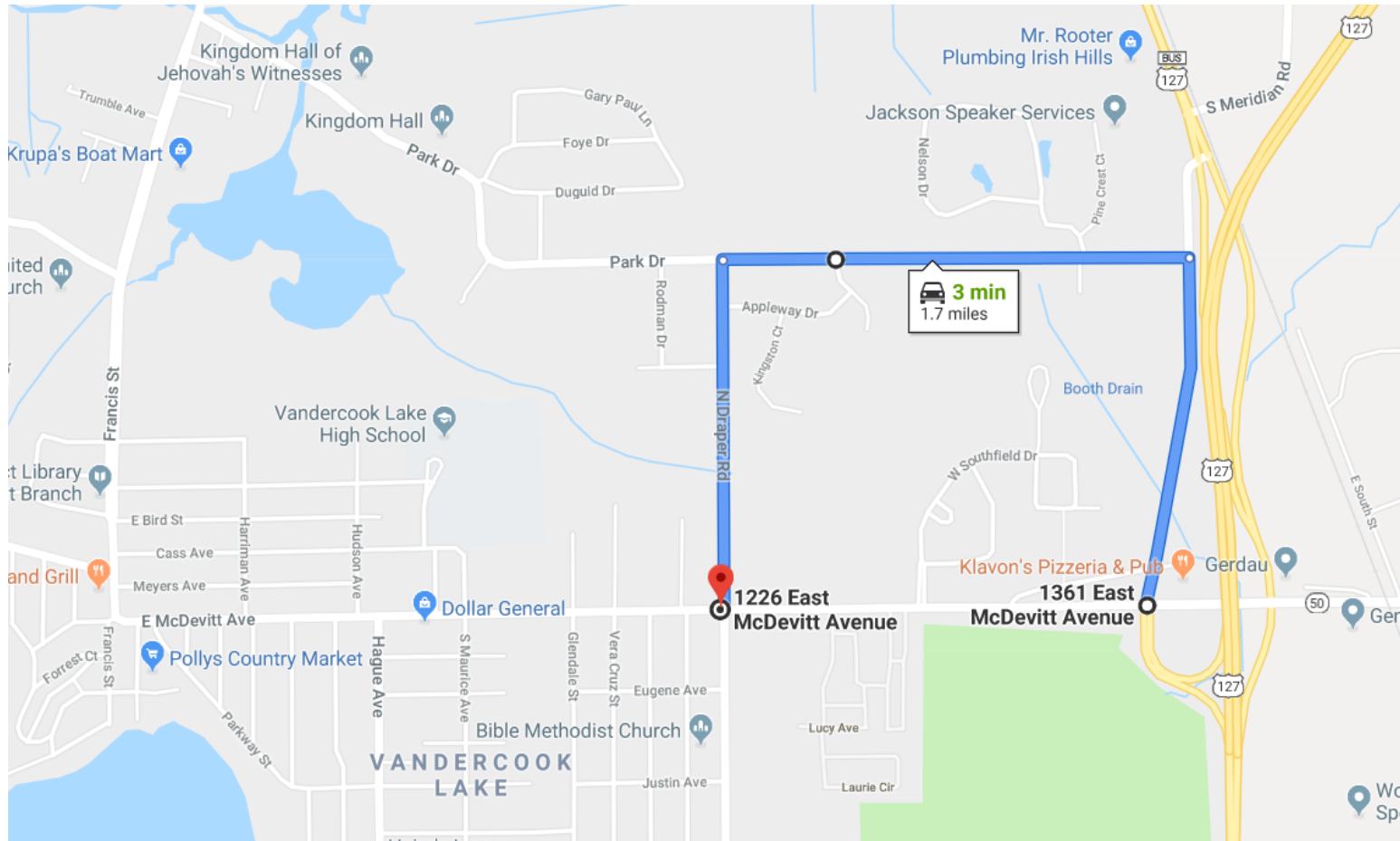
- Full reconstruction
- US-127 to Francis Street
- Approximately 1.5 Miles
- Constructed in 1927
- Widened in 1967
- Resurfaced in 2007 and 2009

PHASE I

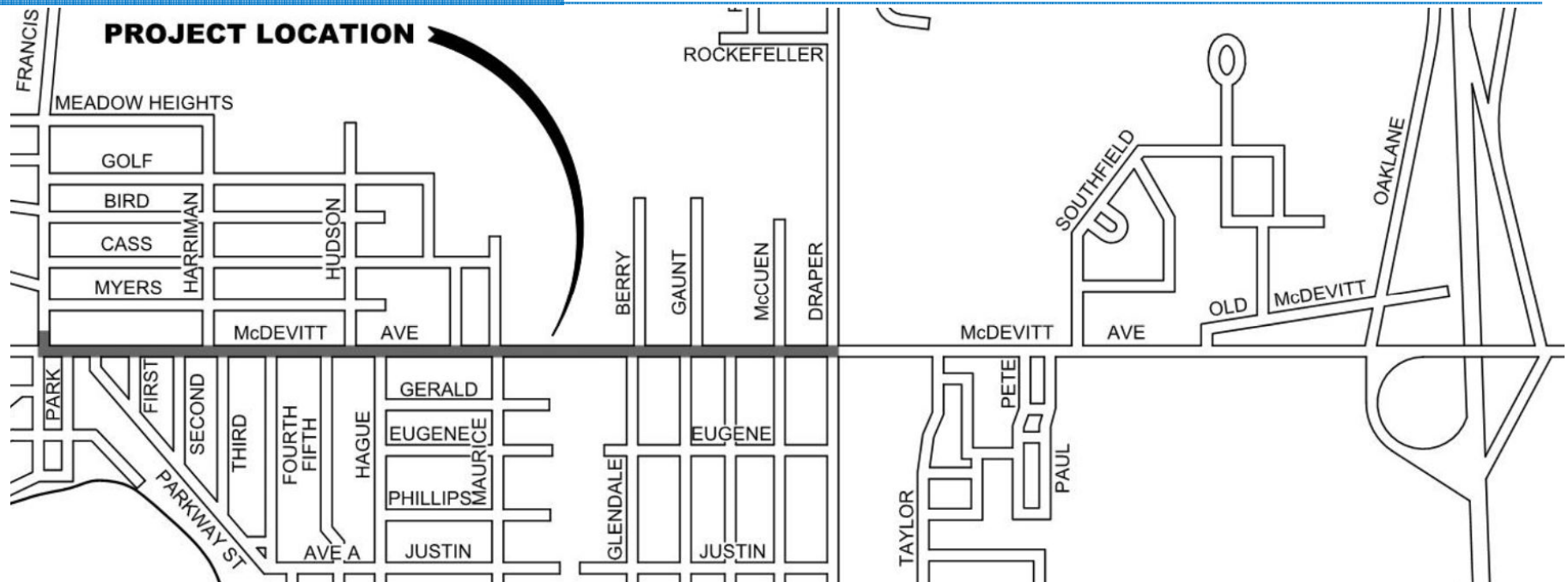


- Construction begins in early October, 2019
- Construction completed August 1st, 2020
- Road Closed to Thru Traffic – All Businesses remain open

DETOUR ROUTE – PHASE I

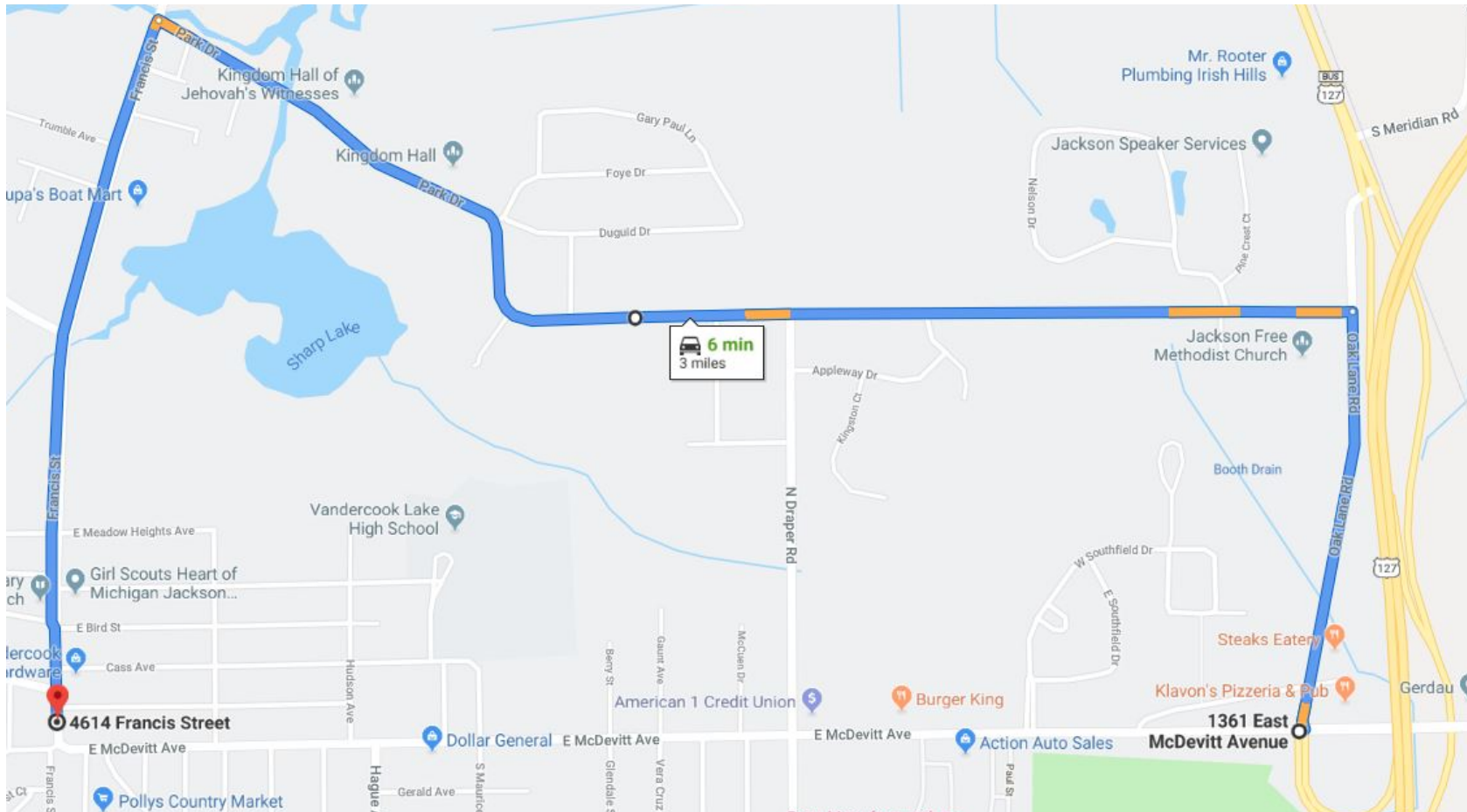


PHASE II



- Construction begins in early Spring, 2020
- Construction completed November 1st, 2020
- Road Closed to Thru Traffic – All Businesses remain open

DETOUR ROUTE PHASE I & II CONCURRENT CONSTRUCTION

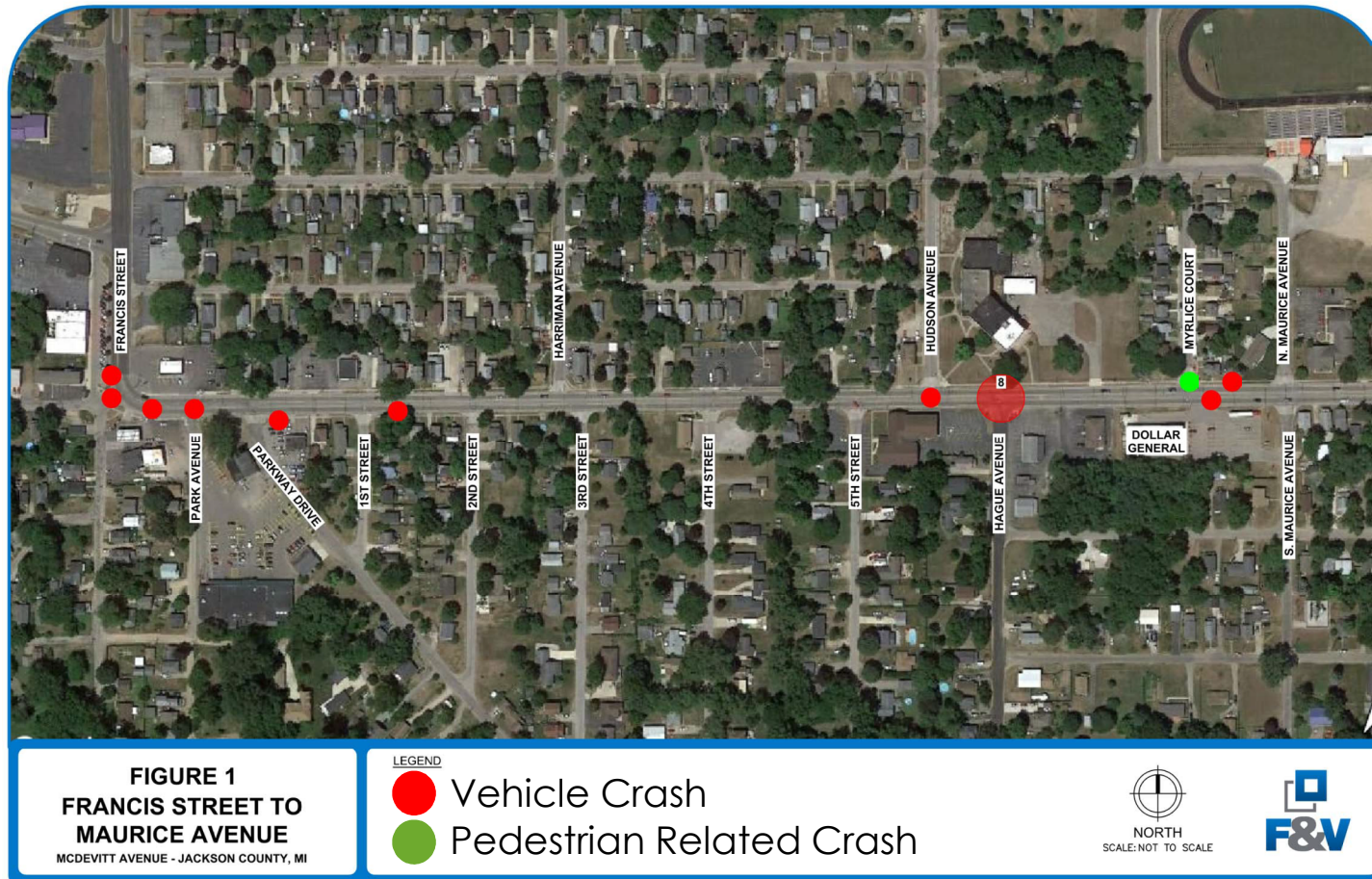


TRAFFIC ANALYSIS

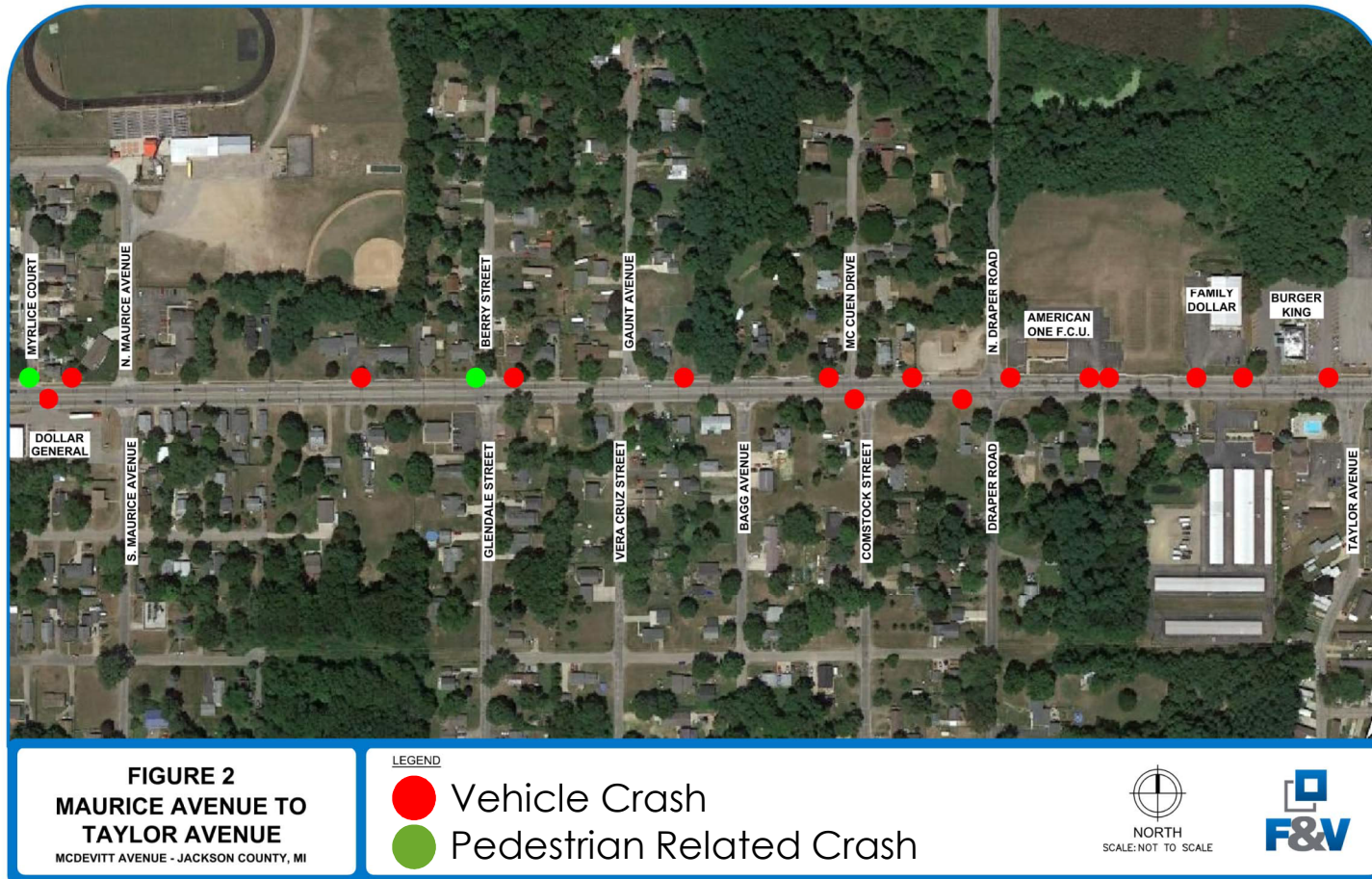
- Existing operations
- Safety analysis
- Pedestrian operations
- Auxiliary lane analysis
- Future operations (20 Year Horizon)



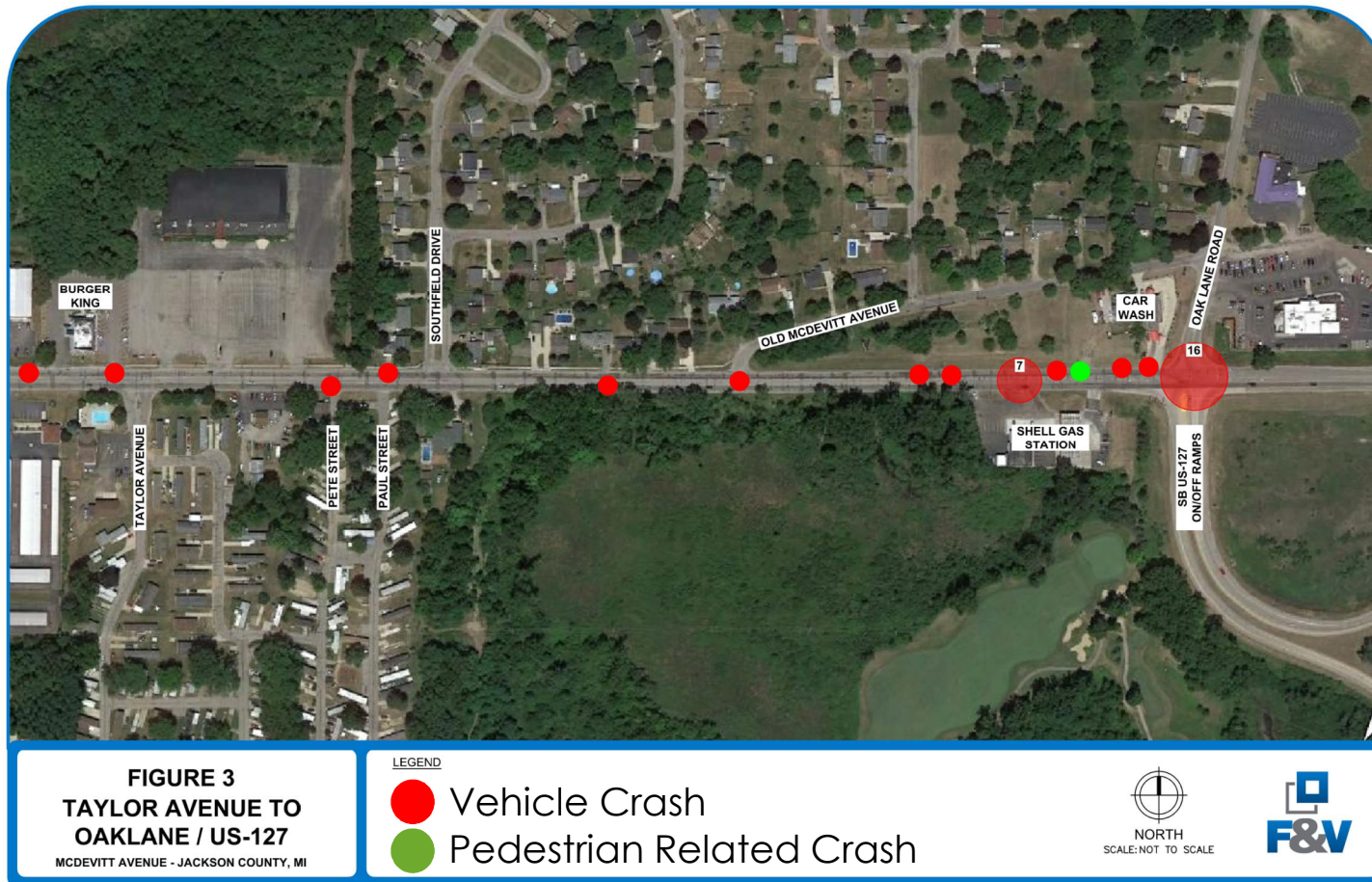
CRASH ANALYSIS (5 YEARS) – FIGURE 1



CRASH ANALYSIS (5 YEARS) – FIGURE 2



CRASH ANALYSIS (5 YEARS) – FIGURE 3



ROADWAY IMPROVEMENTS

- Utility upgrades
- Road diet
- Shared-use path
- Enhanced intersections and pedestrian crossing
- Corridor beautification



UTILITY UPGRADES

- Storm water drainage improvements
- Watermain upgrades from 8-inch to 12-inch (Summit Township)
- Utility pole relocations
- Gas main upgrades
- Enhanced lighting (budget permitting)



STORM SEWER TELEVISION



STORM SEWER TELEVISION

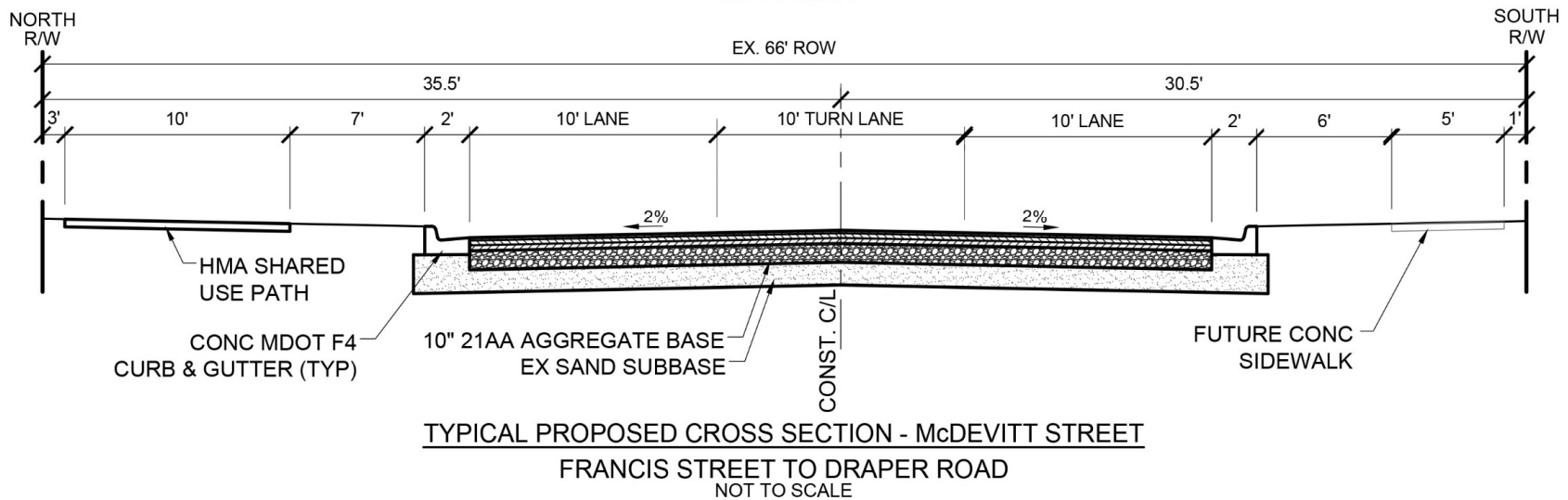
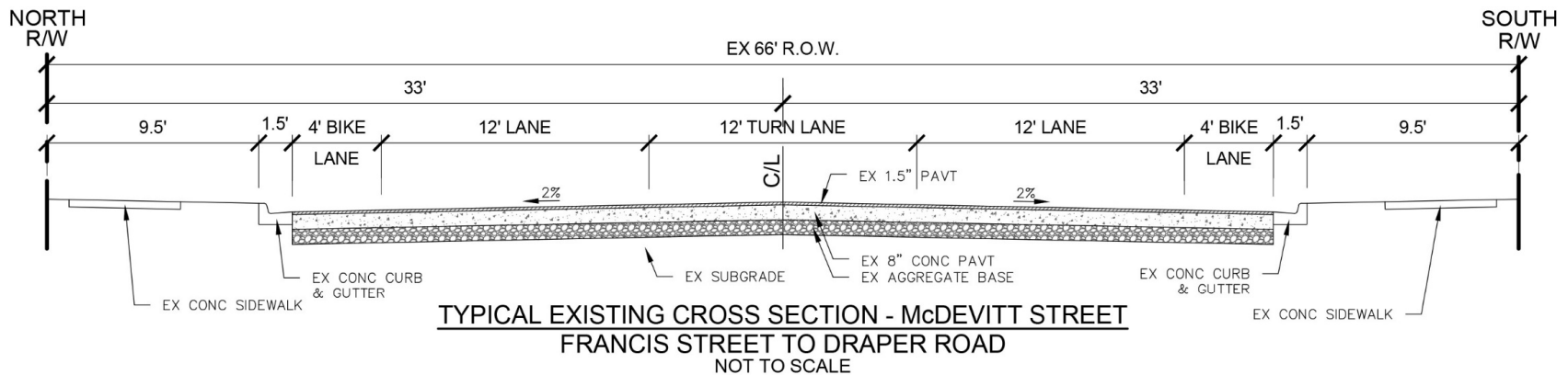


STORM SEWER TELEVISION



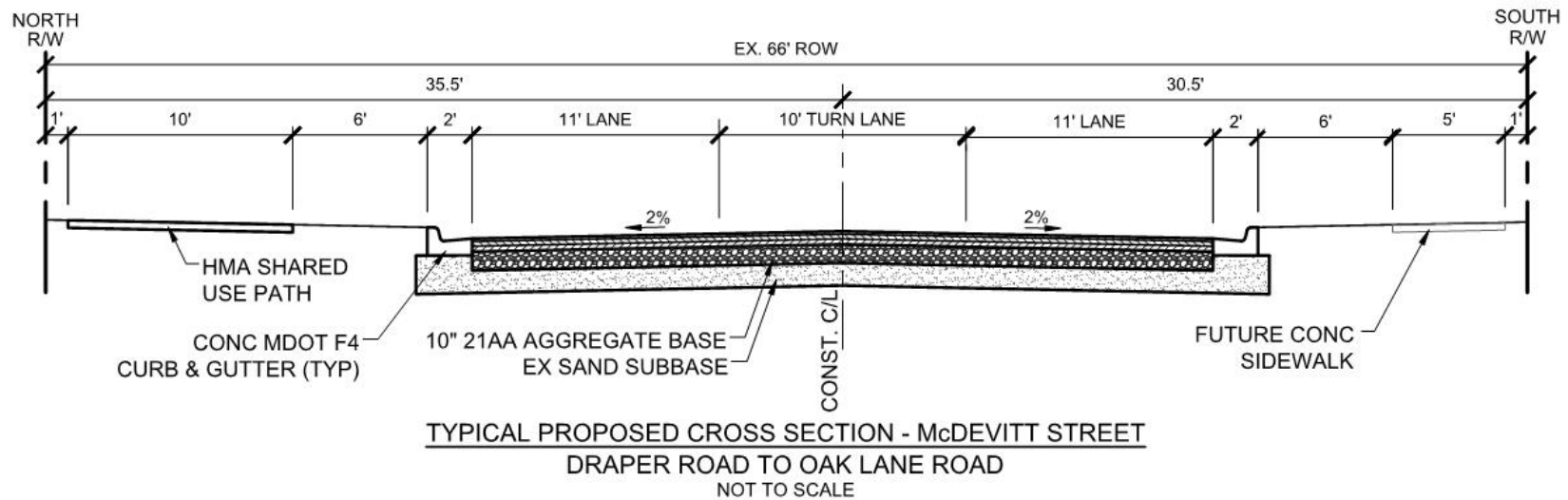
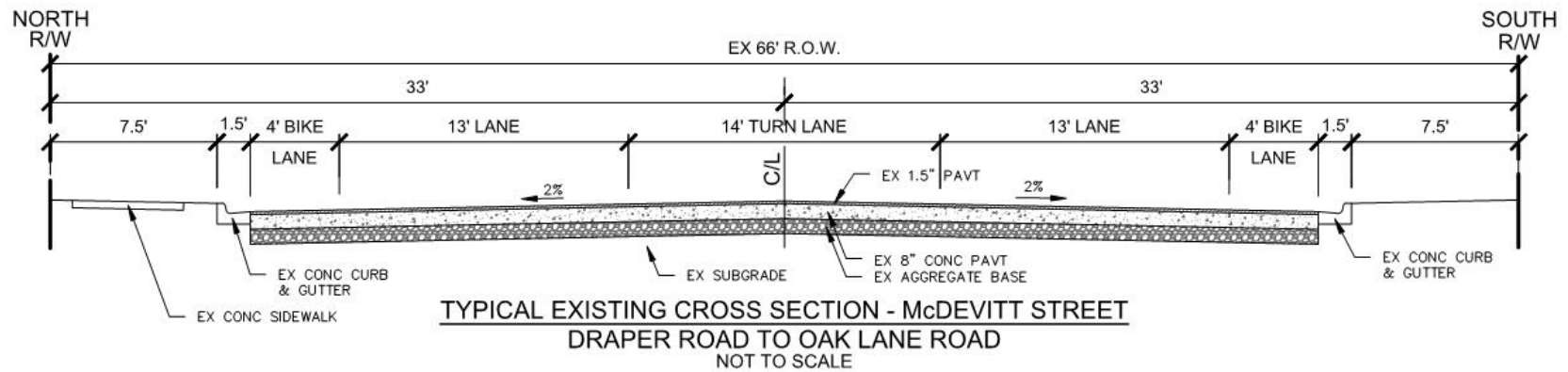
ROAD DIET

FRANCIS STREET TO DRAPER ROAD



ROAD DIET

DRAPER ROAD TO OAK LANE ROAD



INTERSECTION IMPROVEMENTS

Hudson Avenue
Westbound Taper

Maurice Avenue
Westbound
Full-Width Turn Lane

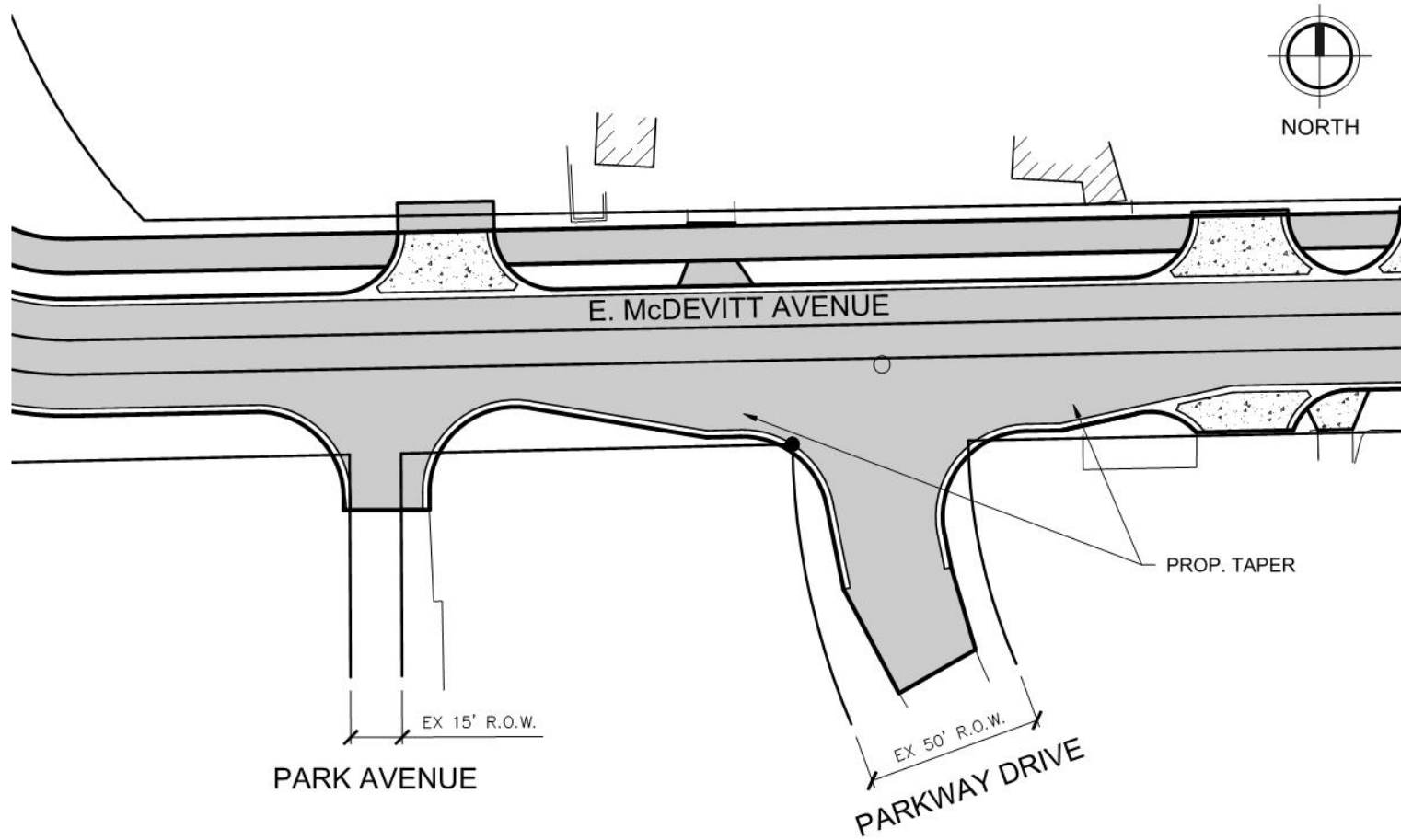
Parkway Street
Eastbound Taper

Hague Street
Eastbound
Full-Width
Turn Lane

Taylor Avenue
Eastbound Taper



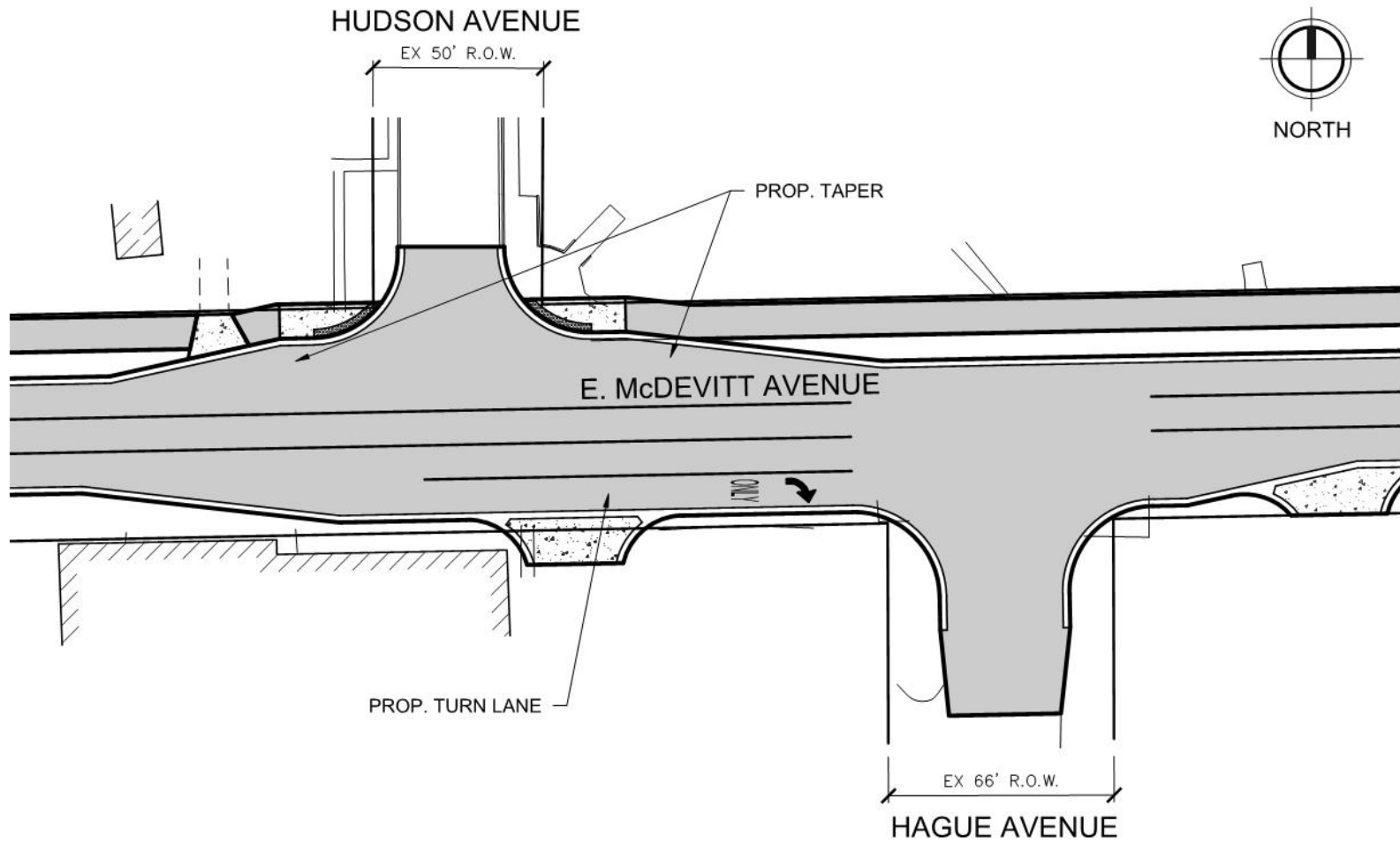
INTERSECTION IMPROVEMENTS PARKWAY STREET – EASTBOUND TAPER



INTERSECTION IMPROVEMENTS

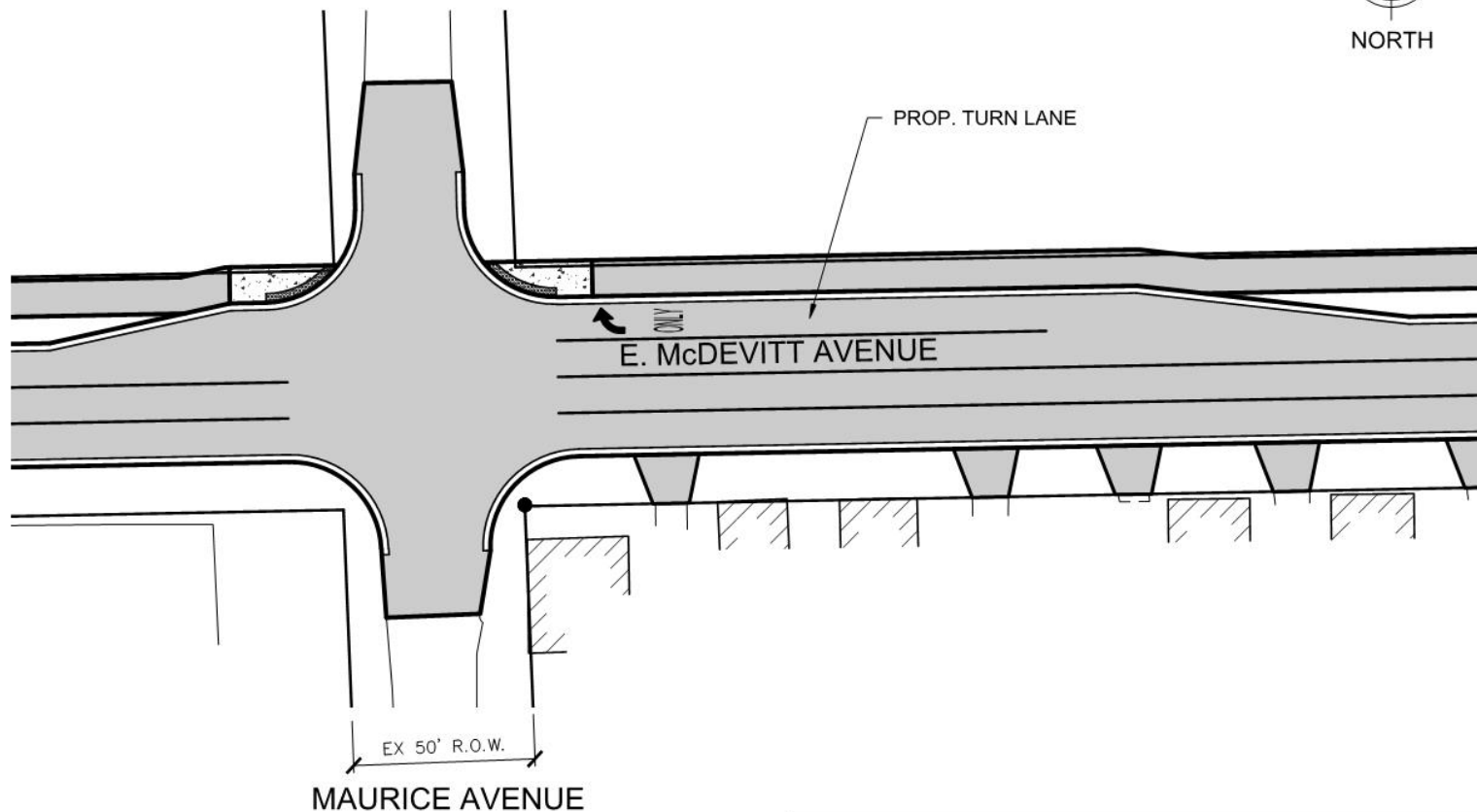
HUDSON AVENUE - WESTBOUND TAPER

HAGUE AVENUE - EASTBOUND TURN LANE



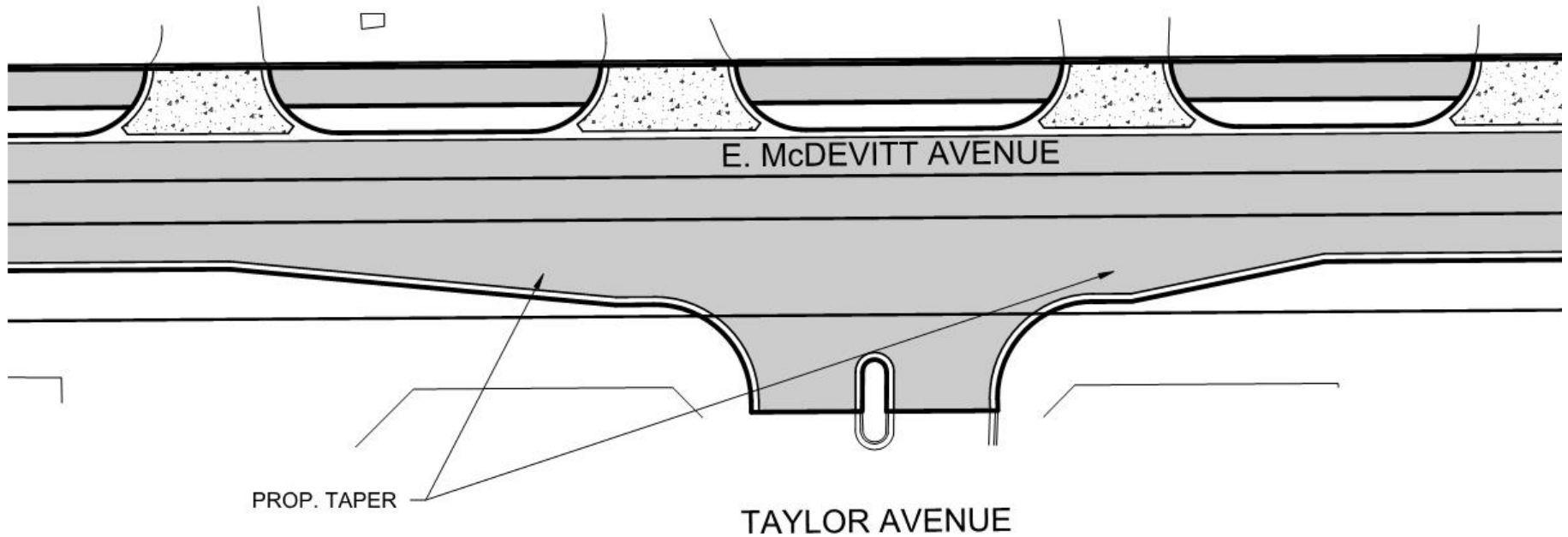
INTERSECTION IMPROVEMENTS

MAURICE AVENUE – WESTBOUND TURN LANE



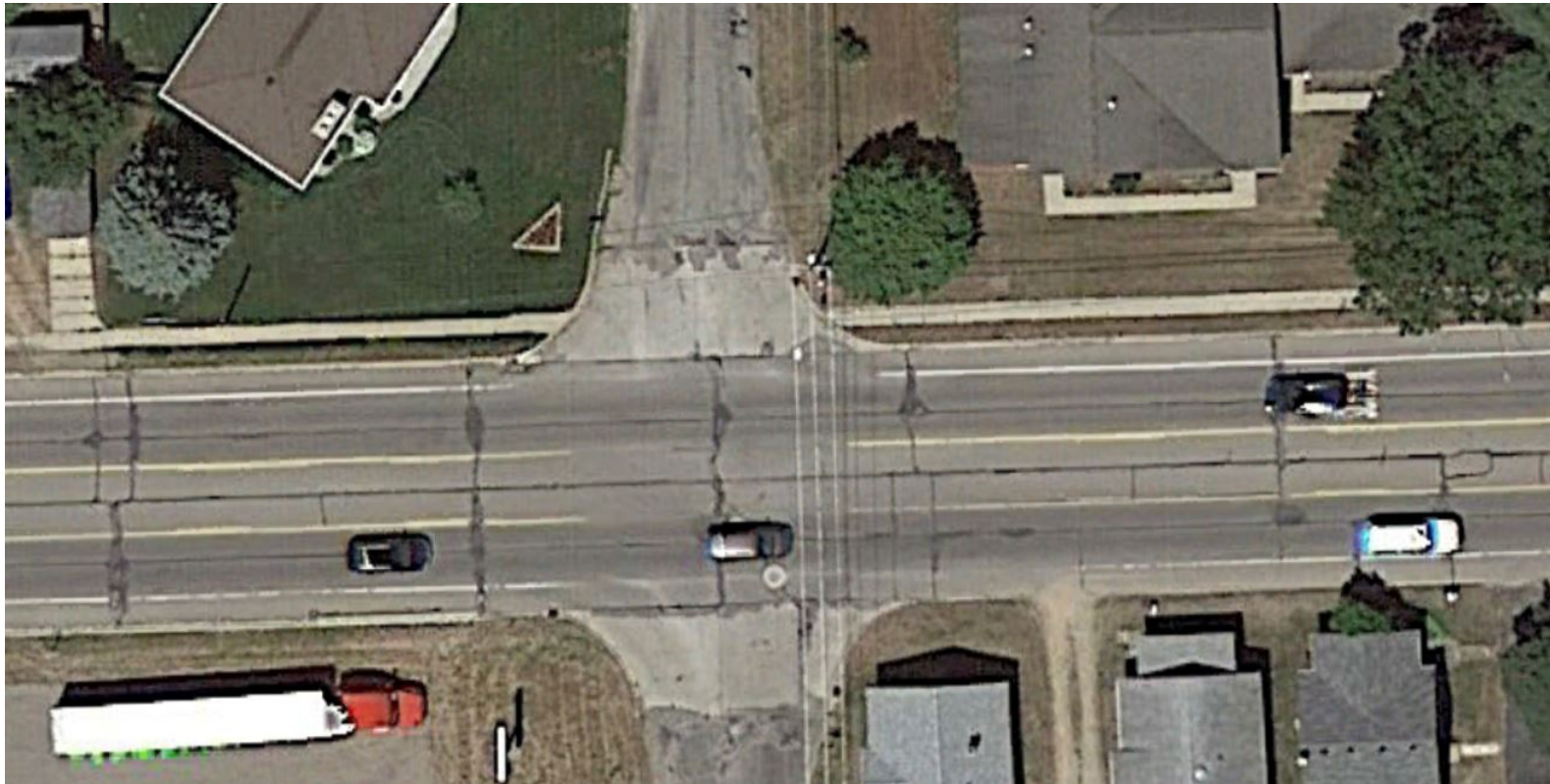
INTERSECTION IMPROVEMENTS

TAYLOR AVENUE – EASTBOUND TAPER



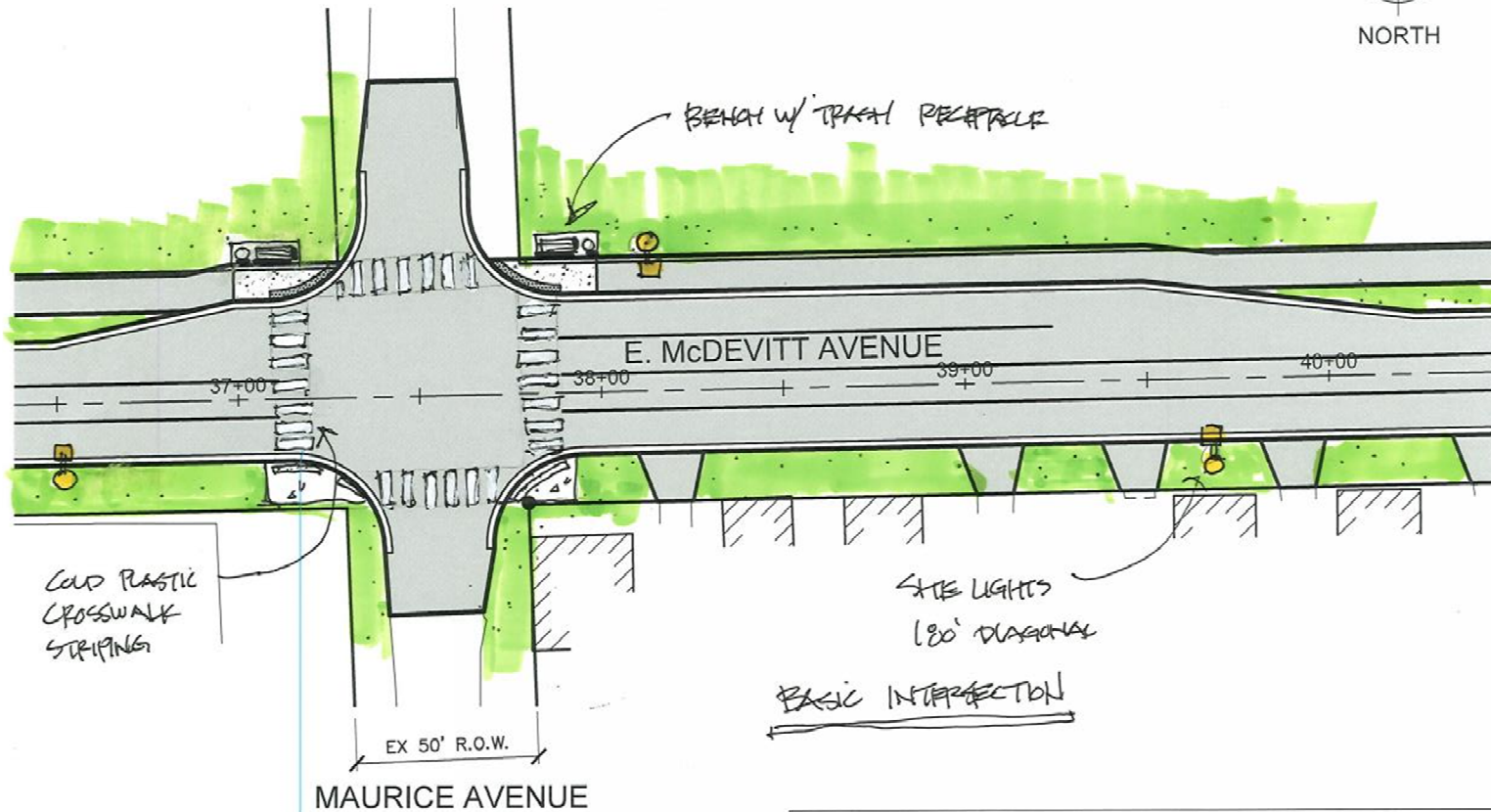
PEDESTRIAN CROSSINGS

MAURICE AVENUE – CURRENT INTERSECTION



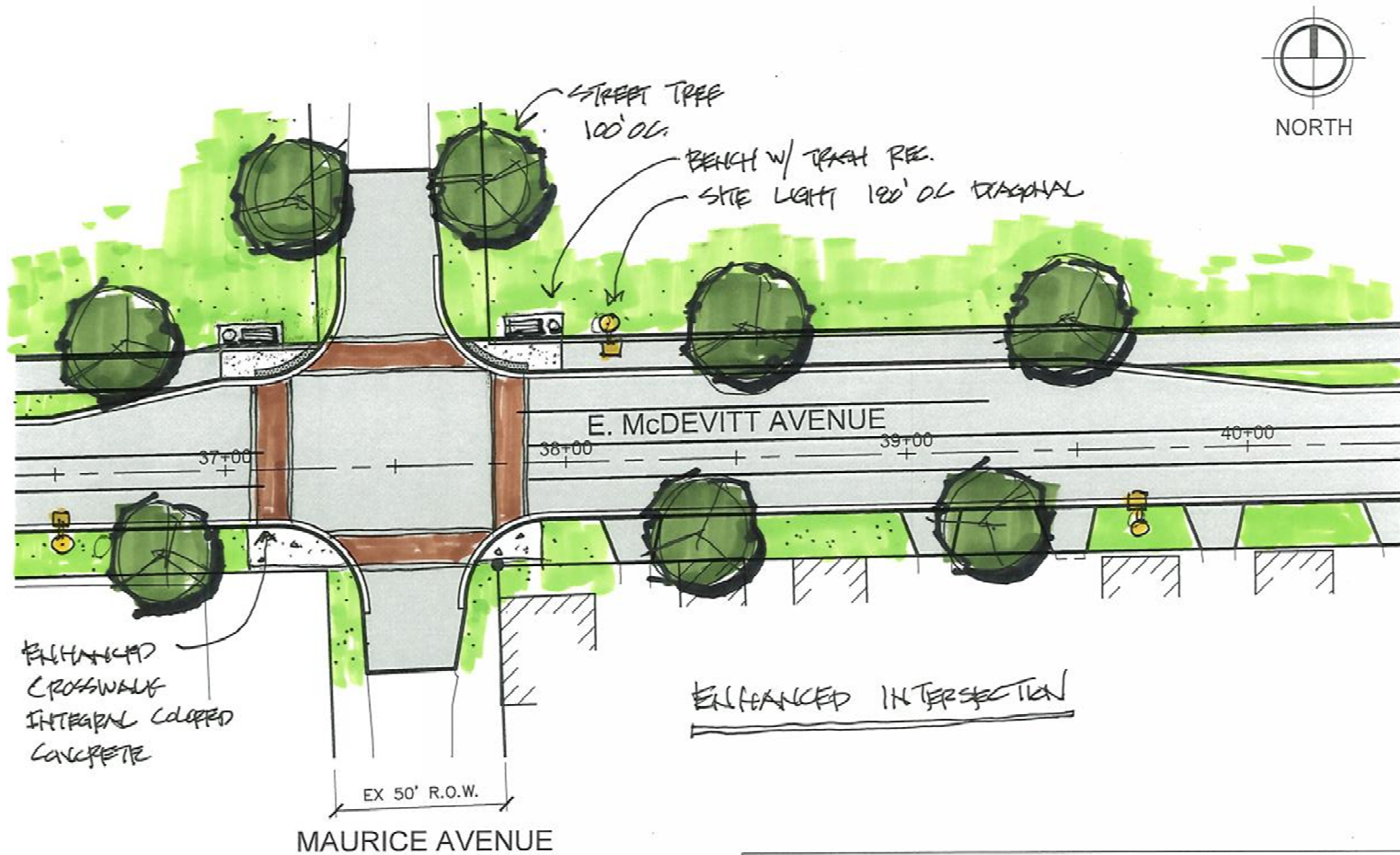
PEDESTRIAN CROSSINGS

MAURICE AVENUE – BASIC INTERSECTION



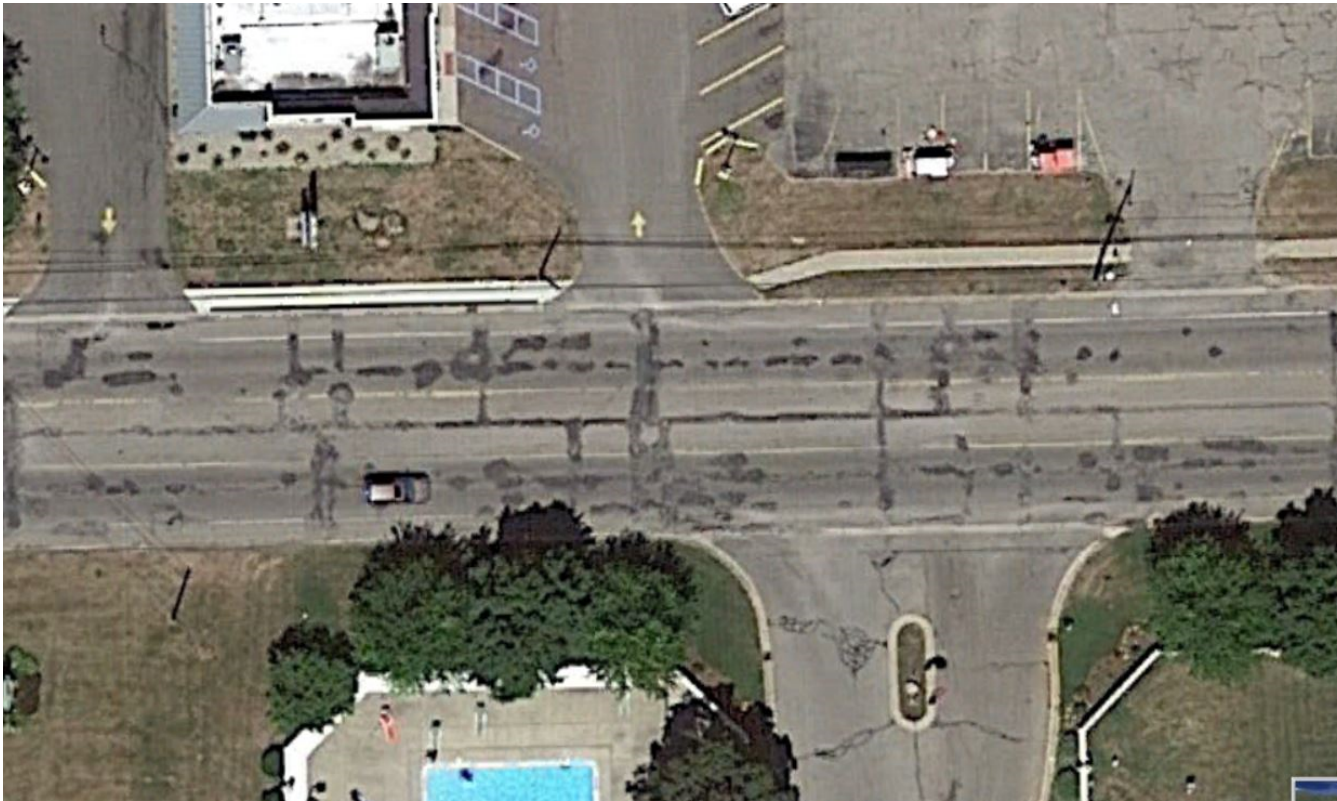
PEDESTRIAN CROSSINGS

MAURICE AVENUE – ENHANCED INTERSECTION



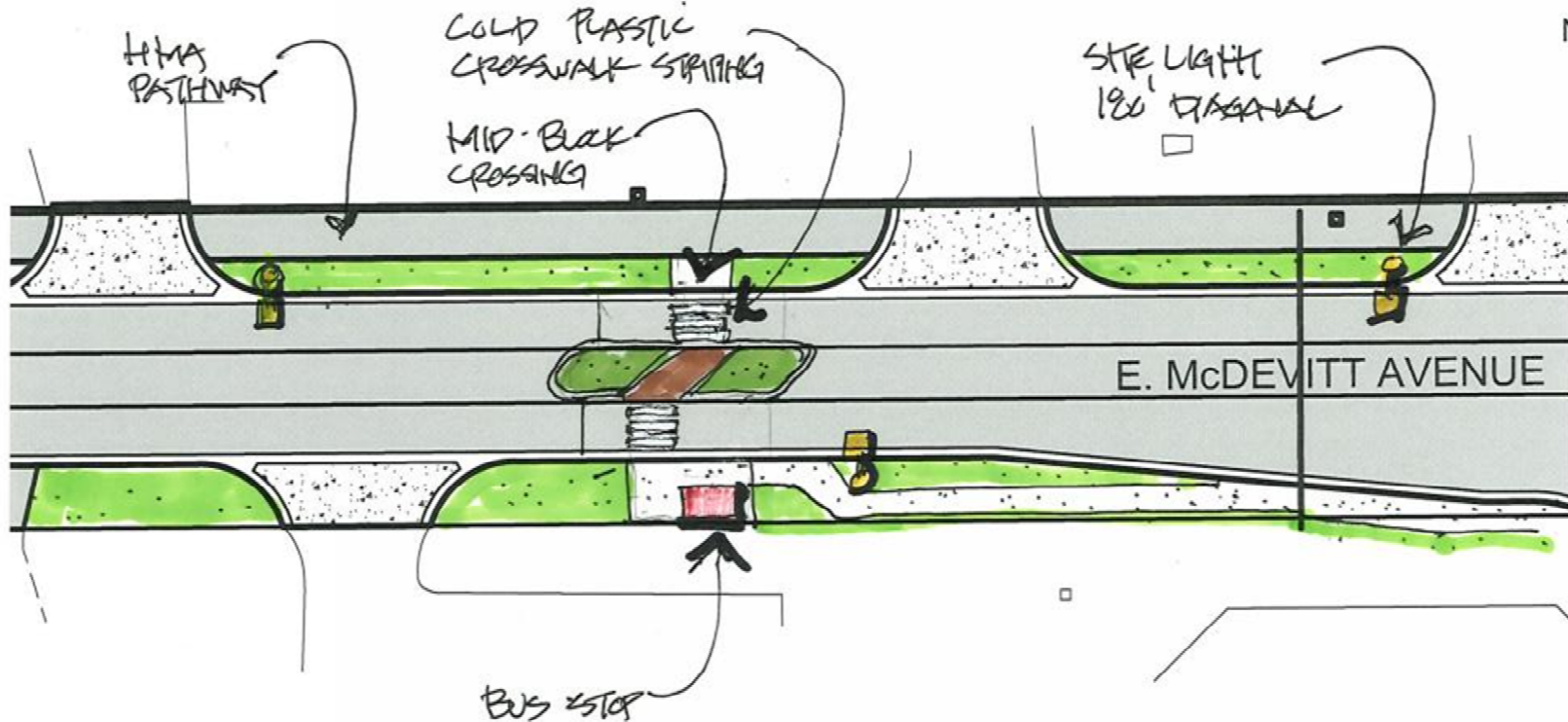
PEDESTRIAN CROSSINGS

TAYLOR AVENUE – CURRENT INTERSECTION



PEDESTRIAN CROSSINGS

TAYLOR AVENUE - PEDESTRIAN CROSSING



AESTHETIC IMPROVEMENTS

SHARED-USE-PATH



AESTHETIC IMPROVEMENTS BENCHES & TRASH RECEPTACLES



AESTHETIC IMPROVEMENTS

DECORATIVE LIGHTING



AESTHETIC IMPROVEMENTS INTERSECTIONS



AESTHETIC IMPROVEMENTS

LOW MAINTENANCE PLANTS





JACKSON COUNTY
Michigan

DISCUSSION AND QUESTIONS?

Fleis & VandenBrink Engineering &
Jackson County Department of Transportation

