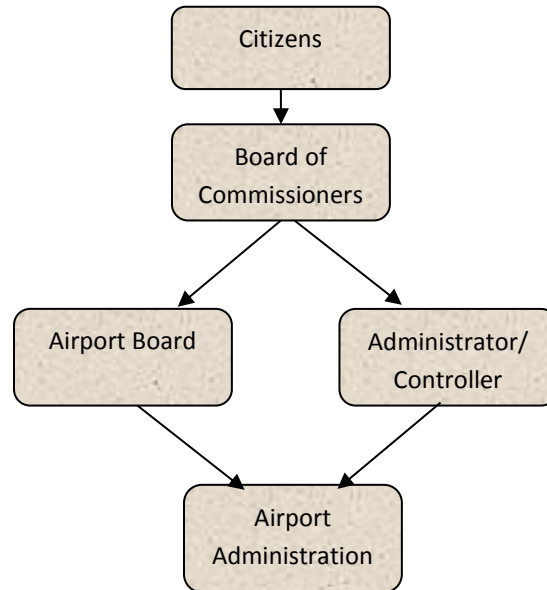




# Airport

---



## Mission Statement

**Providing an exceptional airport and supporting infrastructure for pilots and community partners now and into the future.**



# Airport

## Motto

---

***“Flying Jackson Forward”***

## Vision Statement

---

The vision of Jackson County Airport - Reynolds Field is to remain a full service airport that encourages people to travel and conduct business here.

## Values Statements

---

**Quality** – We do great work getting it right the first time and continue to seek new methods to improve our services.

**Integrity** – We are open and honest with each other and our customers keeping high integrity at the forefront of all that we do.

**Community** – We strive to improve our community during and after work.

**Teamwork** – We collaborate with coworkers, partners and customers to accomplish the airport mission.

**Efficiency** – We work to enhance the value of each resource dollar expended to maximize benefit and minimize waste.

**Accountability** – We hold ourselves accountable for our actions and for the resources entrusted to us.



## **Programs**

---

Airport Operation and Administration

Talent & Economic Development

Airport Zoning Administration

Community Outreach

## **Activities**

Maintain and operate the Regional Airport consisting of 950 acres with two runways, associated taxiways, ten buildings including the control tower, the airport terminal and four historical buildings.

Coordination of community special events, tours and education programs.

Property management responsibilities: Executing rental and lease agreements for airport based hangar owners and businesses.

Administration of Jackson County Airport Zoning Ordinance.

Liaison with FAA on air traffic control funding and compliance issues

Coordination with MDOT Office of Aeronautics for federal Airport Improvement Program (AIP) funding and airport licensing.

Participation in County leadership and organization improvement teams.

## **Strategic Plan Impact**

- ✓ **Economic Development**
- ✓ The County's strategic planning initiative ranks the airport as the number one County General Fund Agency in the Economic Development category and Economic Development remains the top strategic priority. A successful airport impacts economic development in the County and the region. A full-service airport, capable of accommodating medium to large business and regional jets, and having all-weather access capability, is a necessary catalyst for economic stability and future growth. The Airport creates local private enterprise jobs in

# Airport



the following business types: aviation repair, corporate flight departments, flight instruction; restaurant, car rental, fuel sales, investment brokerage, aircraft repair, medical, heating and cooling, clock design and repair, and petroleum property brokerage.

✓ **Healthy Community**

The airport is routinely used for medical patient and organ donation transportation as well as houses a local ambulance service.

✓ **Recreational & Cultural Opportunities**

The airport is the site for a number of special events annually including the Jackson County Conservation District Tree Sale, Blues Festival, Michigan Speedway NASCAR races and the EAA pancake breakfast. The airport is home to many recreational pilots also. Aviation Heritage Park now boasts a dozen aviation themed displays for the public to view and has become a destination for aviation enthusiasts and tour groups. The EAA maintains a large display of WWII artifacts and memorabilia which it routinely shares with Airport tour groups.

## Accomplishments

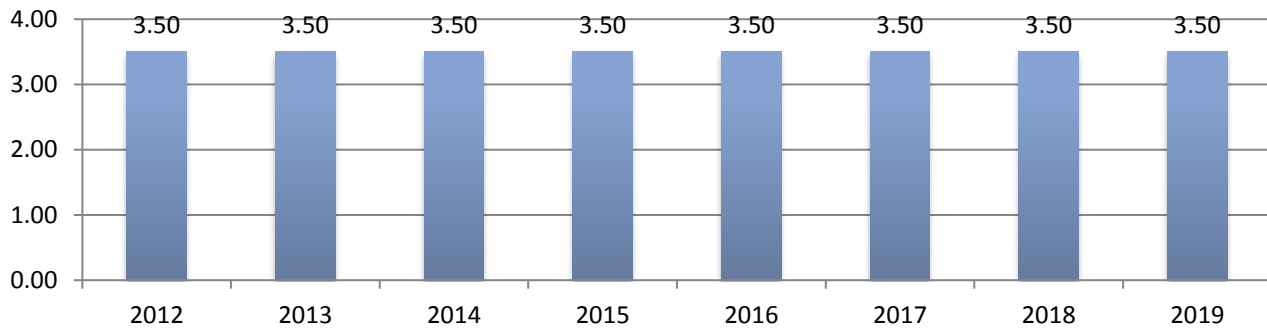
- ✓ Completion of the Runway 7-25 safety project.
- ✓ Implementation of the 2017 Airport Business Plan.
- ✓ Request for Bids for Airport Consultant to be completed in 2018.
- ✓ Airport Layout Plan to be revised and completed in 2018.
- ✓ Jackson County Airport celebrated its 90<sup>th</sup> Anniversary.
- ✓ Commenced Community Outreach Program for Aviation Career Development.

## Budget Adjustments

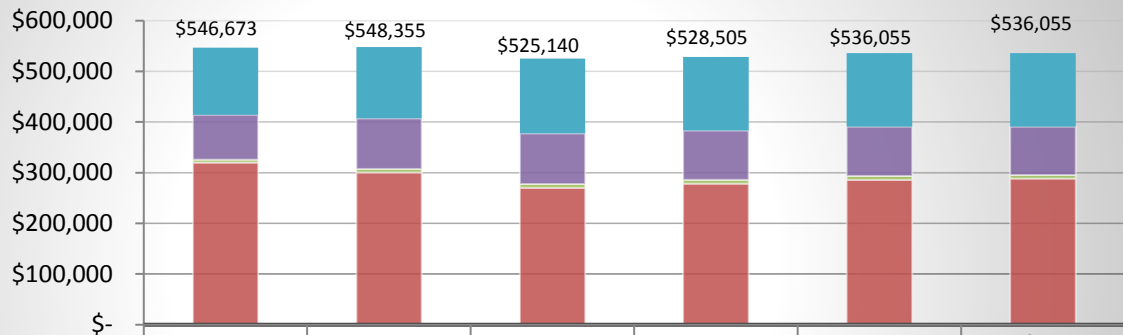
Funding for ~~for~~ seasonal help was received again in 2018 and expected to be needed in 2019. This seasonal position assists in mowing grass and snow plowing. Aging infrastructure and equipment will require funding increases for building and equipment maintenance.



## Airport Administration FTE History



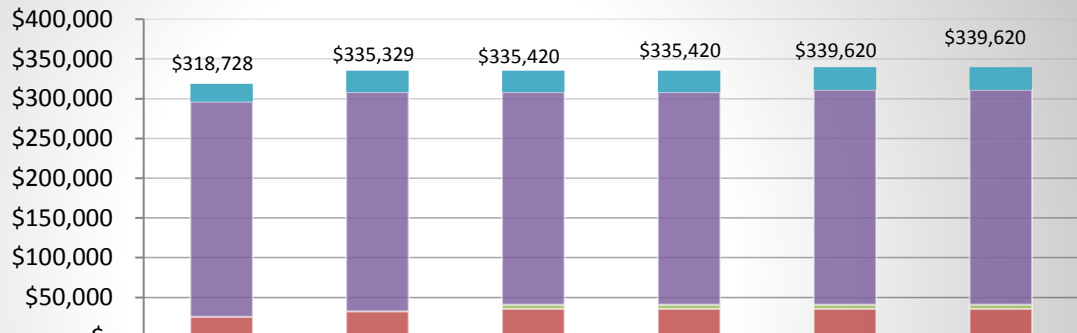
## Airport Administration Expenditures



	2016 ACTUAL	2017 ACTUAL	2018 BUDGET	2019 DEPT REQUESTED	2019 BUDGET	Draft 2020 BUDGET
OTHER	\$132,684	\$141,250	\$147,400	\$145,505	\$145,505	\$145,505
CONTRACT SERVICES	\$88,363	\$99,863	\$100,100	\$97,100	\$97,100	\$95,100
SUPPLIES & MATERIALS	\$5,546	\$6,453	\$7,200	\$7,200	\$7,200	\$7,060
PERSONNEL SERVICES	\$320,080	\$300,789	\$270,440	\$278,700	\$286,250	\$288,390
<b>TOTAL PROGRAM COSTS</b>	<b>\$546,673</b>	<b>\$548,355</b>	<b>\$525,140</b>	<b>\$528,505</b>	<b>\$536,055</b>	<b>\$536,055</b>

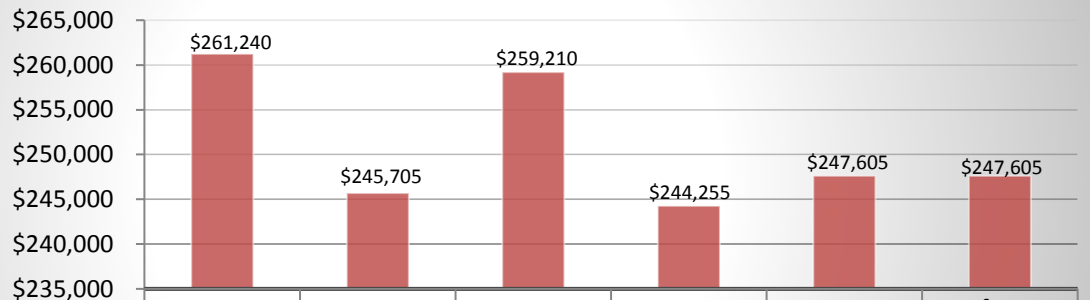
# Airport

## Airport Administration Revenues



	2016 ACTUAL	2017 ACTUAL	2018 BUDGET	2019 DEPT REQUESTED	2019 BUDGET	Draft 2020 BUDGET
OTHER	\$22,454	\$26,859	\$27,100	\$27,100	\$28,600	\$28,600
INTEREST & RENTALS	\$270,607	\$275,707	\$267,470	\$267,470	\$270,170	\$270,170
INTERGOVERNMENTAL	\$-	\$-	\$4,850	\$4,850	\$4,850	\$4,850
CHARGES/FEES	\$25,667	\$32,763	\$36,000	\$36,000	\$36,000	\$36,000
<b>TOTAL PROGRAM REVENUES</b>	<b>\$318,728</b>	<b>\$335,329</b>	<b>\$335,420</b>	<b>\$335,420</b>	<b>\$339,620</b>	<b>\$339,620</b>

## Airport Operating Transfers In Revenues



	2016 ACTUAL	2017 ACTUAL	2018 BUDGET	2019 DEPT REQUESTED	2019 BUDGET	Draft 2020 BUDGET
TRANSFERS IN	\$261,240	\$245,705	\$259,210	\$244,255	\$247,605	\$247,605
<b>TOTAL PROGRAM REVENUE</b>	<b>\$261,240</b>	<b>\$245,705</b>	<b>\$259,210</b>	<b>\$244,255</b>	<b>\$247,605</b>	<b>\$247,605</b>

## Strategic Outcomes

<u>Indicator</u>	2014 <u>Target</u>	2015 <u>Target</u>	2016 <u>Target</u>	2017 <u>Target</u>	2018 <u>Target</u>	2019 <u>Target</u>
Private business full-time employees based at the airport	35	35	42	42	42	42
Private business part-time employees based at the airport	21	21	21	21	21	21
Total Dollars Granted for Runway Safety Project	1,000,00	12,500,000	0	12,000,000		
Aircraft Damage Incidents	0	0	0	0	1	0

## Other Key Indicators

<u>Indicator</u>	2014 <u>Target</u>	2015 <u>Actual</u>	2016 <u>Actual</u>	2017 <u>Actual</u>	2018 <u>Target</u>	2019 <u>Target</u>
Number of "operations" (aircraft landing or take off)	43,591	41,817	43,965	39,510	39,510	43,965
Special Events held at the airport	5	5	4	4	4	4
Overtime expended for Maintenance Ops	7,800	6,000	6,000	6,000	6,000	6,000
Contract Air Traffic Control Costs	70,000	71,000	70,000	73,452	73,452	75,000
General Fund Support Dollars (excluding hangar loan payment and capital outlay) (Deleted Snow and Ice Removal DATA)	190,000	190,000		213,028	295,000	295,000
Fuel flowage in gallons (total JetA and 100LL fuel delivered)	134,000	150,000	193,603	152,027	152,027	165,000
County-owned hangar occupancy rate	100%	100%	100%	89%	100%	100%