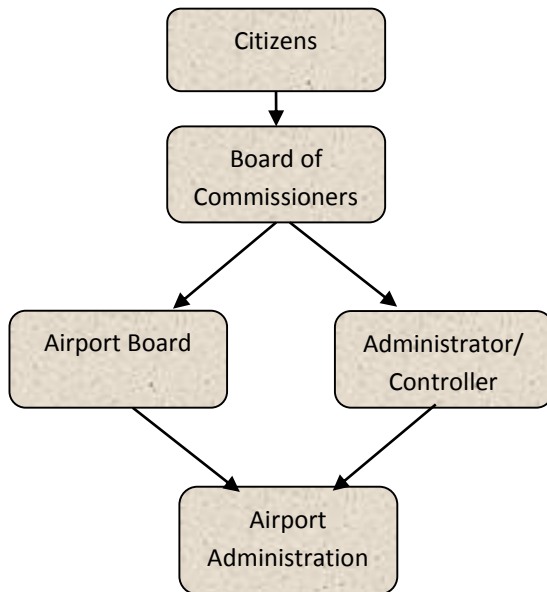




Airport



Mission Statement

Providing an exceptional airport and supporting infrastructure for pilots and community partners now and into the future.



Airport

Motto

“Flying Jackson Forward”

Vision Statement

The vision of Jackson County Airport - Reynolds Field is to remain a full service airport that encourages people to travel and conduct business here.

Values Statements

Quality – We do great work getting it right the first time and continue to seek new methods to improve our services.

Integrity – We are open and honest with each other and our customers keeping high integrity at the forefront of all that we do.

Community – We strive to improve our community during and after work.

Teamwork – We collaborate with coworkers, partners and customers to accomplish the airport mission.

Efficiency – We work to enhance the value of each resource dollar expended to maximize benefit and minimize waste.

Accountability – We hold ourselves accountable for our actions and for the resources entrusted to us.



Programs

Airport Operation and Administration

Runway Safety Project

Airport Zoning Administration

Activities

Maintenance of runway safety surfaces and lighting systems.

Maintenance of ten buildings and airport maintenance equipment.

Coordination of runway safety project.

Coordination of special events.

Snow removal, grass mowing and maintenance of airport equipment

Coordinate leasing, hangar rental and based-business operating agreements.

Administration of Jackson County Airport Zoning Ordinance.

Liaison with FAA on matters of air traffic control services funding and compliance matters.

Airport tours and public education programs.

Coordination with MDOT Office of Aeronautics for runway safety project funding, runway safety standards and airport licensing.

Participation in County leadership and organization improvement teams.

Strategic Plan Impact

Airport



- ✓ **Economic Development**

- ✓ The County's strategic planning initiative ranks the airport as the number one County General Fund Agency in the Economic Development category and Economic Development remains the top strategic priority. A successful airport impacts economic development in three primary ways: 1) the runway 7-25 safety project will attract federal and state grants over the next year making the airport an economic generator for the region; 2) a full-service airport is a necessary catalyst for economic stability and future growth; 3) the airport creates local private enterprise jobs in the following business types: aviation repair, corporate flight departments; restaurant, car rental, fuel sales, investment brokerage, aircraft repair, medical, heating and cooling, clock repair, and petroleum property brokerage. The Runway Safety Project will generate 24 jobs per million dollars of investment with the total project costs being approximately \$40 million since 2005 (including 2017). A 2016 economic value survey indicated the airport's "value" at over \$17 million annually.

- ✓ **Healthy Community**

The airport is routinely used for medical patient and organ donation transportation.

- ✓ **Recreational & Cultural Opportunities**

The airport is the site for a number of special events annually including the, Blues Festival, Michigan Speedway NASCAR races and the EAA pancake breakfast. The airport is home to many recreational pilots also. Aviation Heritage Park now boasts a dozen aviation themed displays for the public to view and has become a destination for aviation enthusiasts and tour groups.

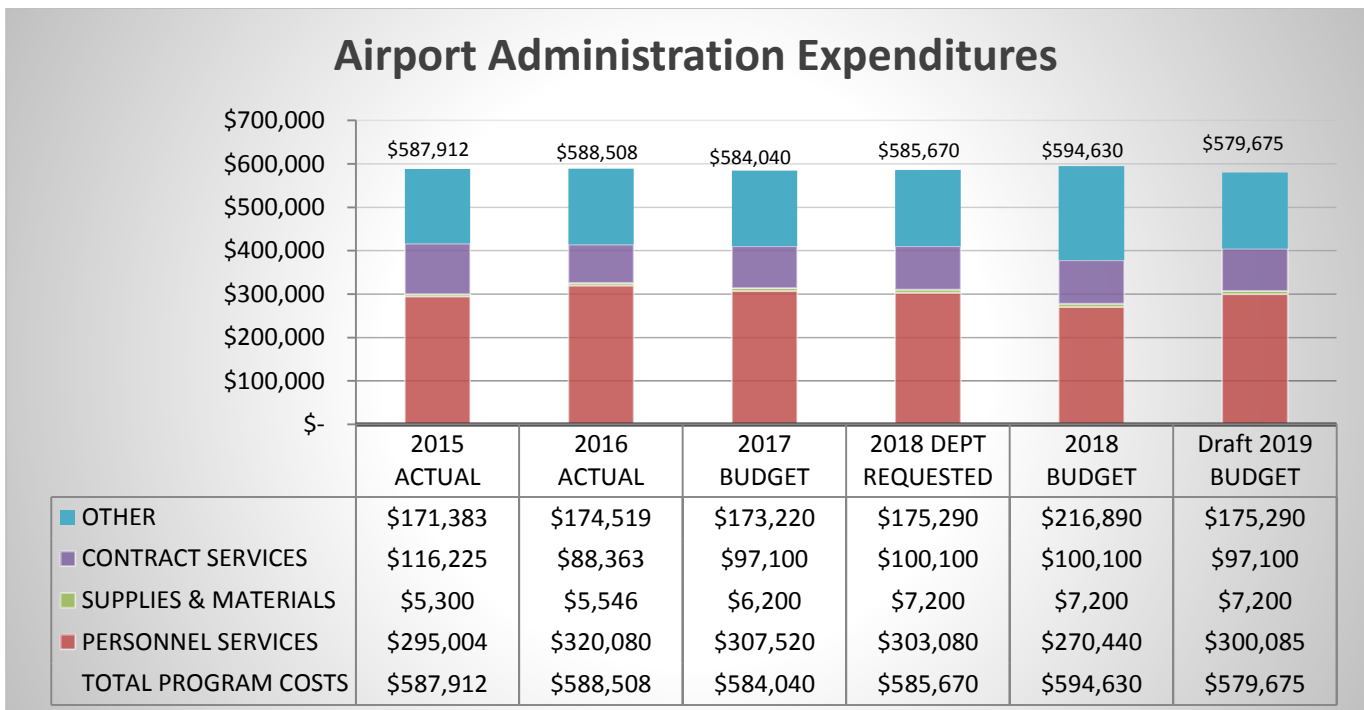
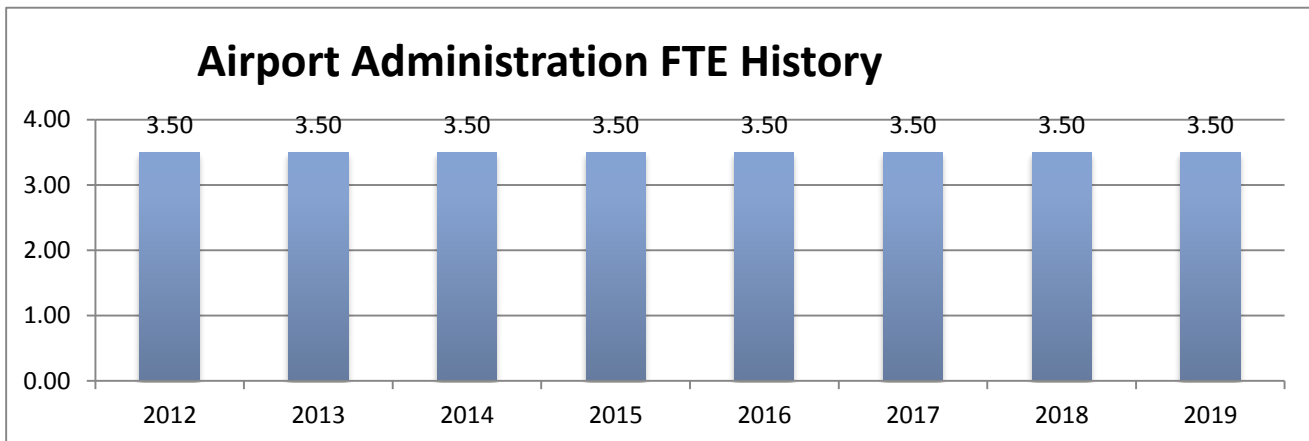
Accomplishments

- ✓ Phase I Construction for the Runway 7-25 Safety Project is substantially completed with runway and taxiway paving scheduled for 2017.
- ✓ Excavation and disposal of the former City of Jackson landfill materials was completed in 2017 along with the Phase I Runway 7-25 Construction.
- ✓ Design specifications and bidding took place in 2017 for the Runway 7-25 Phase II Construction
- ✓ Contracts and grants for Phase II Construction for the Runway 7-25 Safety Project are programed for 2017 completion.
- ✓ The Airport Business Plan will be completed in 2017.



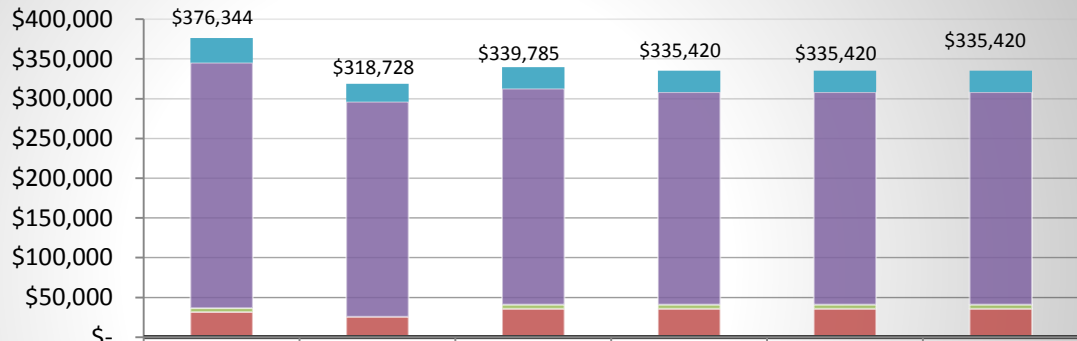
Budget Adjustments

Funding for seasonal help was received again in 2017. This seasonal position assists in mowing grass and snow plowing. Funding increases in Maintenance of Buildings, Maintenance of Grounds and Maintenance of Equipment will not be necessary in the 2018 budget



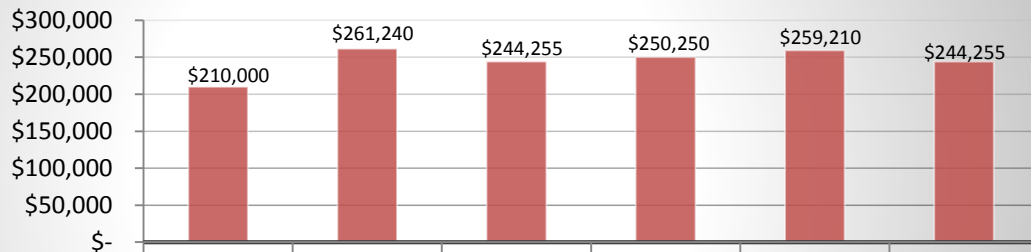
Airport

Airport Administration Revenues



	2015 ACTUAL	2016 ACTUAL	2017 BUDGET	2018 DEPT REQUESTED	2018 BUDGET	Draft 2019 BUDGET
OTHER	\$30,932	\$22,454	\$27,100	\$27,100	\$27,100	\$27,100
INTEREST & RENTALS	\$308,932	\$270,607	\$271,835	\$267,470	\$267,470	\$267,470
INTERGOVERNMENTAL	\$4,850	\$-	\$4,850	\$4,850	\$4,850	\$4,850
CHARGES/FEES	\$31,630	\$25,667	\$36,000	\$36,000	\$36,000	\$36,000
TOTAL PROGRAM REVENUES	\$376,344	\$318,728	\$339,785	\$335,420	\$335,420	\$335,420

Airport Operating Transfers In Revenues



	2015 ACTUAL	2016 ACTUAL	2017 BUDGET	2018 DEPT REQUESTED	2018 BUDGET	Draft 2019 BUDGET
TRANSFERS IN	\$210,000	\$261,240	\$244,255	\$250,250	\$259,210	\$244,255
TOTAL PROGRAM REVENUE	\$210,000	\$261,240	\$244,255	\$250,250	\$259,210	\$244,255

Strategic Outcomes

<u>Indicator</u>	<u>2012 Actual</u>	<u>2013 Actual</u>	<u>2014 Target</u>	<u>2015 Target</u>	<u>2016 Target</u>	<u>2017 Target</u>
Private business full-time employees based at the airport	35	35	35	35	42	42
Private business part-time employees based at the airport	21	21	21	21	21	21
Total Dollars Granted for Runway Safety Project	1,200,000	2,200,000	1,000,000	12,500,000	0	12,000,000
Aircraft Damage Incidents	0	1	0	0	0	0

Other Key Indicators

<u>Indicator</u>	<u>2012 Actual</u>	<u>2013 Actual</u>	<u>2014 Target</u>	<u>2015 Target</u>	<u>2016 Target</u>	<u>2017 Target</u>
Number of "operations" (aircraft landing or take off)	51,292	46,902	43,089	44,000	44,500	44,148
Special Events held at the airport	4	5	5	5	4	4
Overtime expended for Maintenance Ops	5,000	5,000	7,800	6,000	6,000	6,000
Contract Air Traffic Control Costs	68,000	69,000	70,000	71,000	70,000	72,700
General Fund Support Dollars (excluding hangar loan payment and capital outlay) (Deleted Snow and Ice Removal DATA)	182,501	153,840	190,000	190,000		295,000
Fuel flowage in gallons (total JetA and 100LL fuel delivered)	144,000	133,000	134,000	150,000	150,000	193,000
County-owned hangar occupancy rate	95%	100%	100%	100%	100%	100%