

Friend of the Court

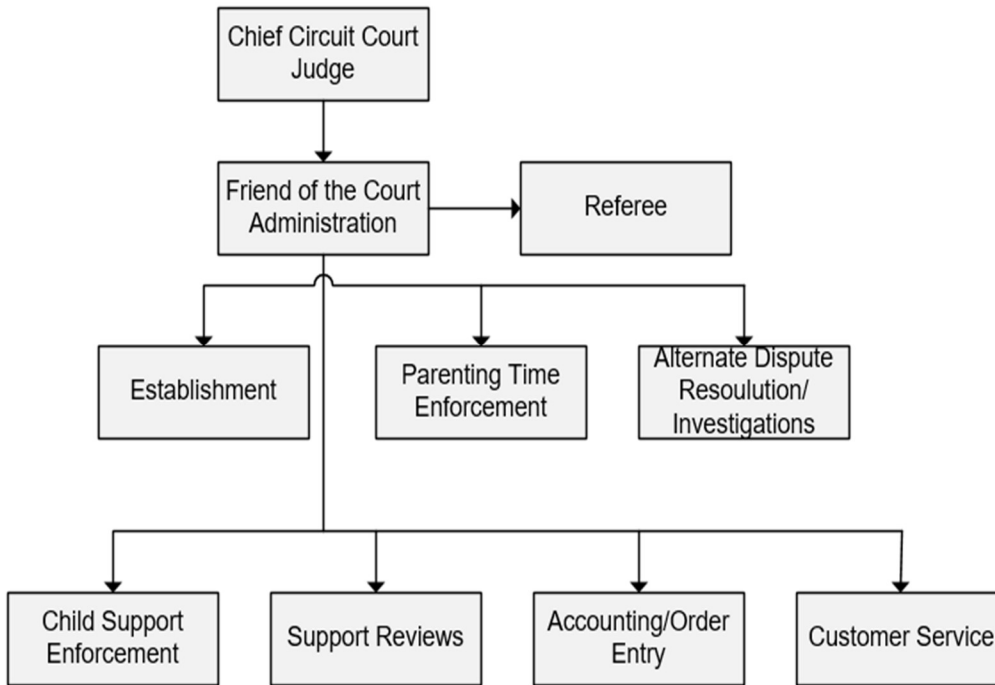
Activities

Enforcement of court orders regarding custody, parenting time, and support of minor children.

Conducts hearings, investigations, and makes reports and recommendations to the Court on those matters.

The FOC offers mediation as an alternative dispute resolution process, for custody and parenting time issues.

Establishes paternity and support and parenting time orders for families.



Mission Statement

In keeping with the best interest of children, the Jackson County Friend of the Court will provide quality services in a fair and respectful manner.



Programs

[Judgment Order Entry Fees](#)

[FOC Duties](#)

Judgement Order Entry Fees

Strategic Plan Impact/Accomplishments

See FOC Duties budget page.

Budget Adjustments

There are no significant budget adjustments to this program.

FOC Duties

Strategic Plan Impact

✓ **Safe Community**

Investigating and making custody, parenting time, and support recommendations helps ensure the proper care and custody of children. Facilitative Information Gathering Conferences (FIGS), formerly known as Conciliations, allows parents to mediate their disputes and to reach their own custody, parenting time, and support agreements, which reduces the likelihood of parental kidnapping, non-payment of support, and parental alienation. Domestic Violence Screening and Safety Planning for families with domestic violence contributes to a safe community by providing safe options for parents at risk or struggling with domestic violence. Reporting suspected abuse and neglect and conducting criminal history checks on FOC employees and vendors contributes to a safe community.

The Warrant Unit arrests individuals who have outstanding warrants, collaborates with local and statewide law enforcement to transport and arraign individuals with child support warrants, including the Attorney General's Office for Felony Non-Support cases.

Friend of the Court

Safeguarding confidential FOC files keeps the community safe from improper disclosure of confidential information.

✓ **Economic Development**

The duties performed by the Enforcement/Casework, Bench Warrant, and Interstate Units advances economic development. By enforcing and collecting child and spousal support, Jackson's children and families are afforded financial support to help them meet their basic needs. Support monies are often spent within the community, which ensures continued growth and vibrancy within the local, regional, state, and global marketplace.

Additionally, the Friend of the Court is partnering with Michigan Works and Temporary Employment Agencies to connect unemployed or underemployed parents with educational and job opportunities.

The timely entry and modification of support orders into the Michigan Child Support Enforcement System by the Accounting Department is critical to the receipting and distribution of support payments. The FOC Support Services Unit, in addition to the Michigan Disbursement Unit, accepts payments locally to ensure that no money is turned away. By reviewing support obligations, the FOC helps ensure that support is set at manageable levels. Customers are more likely to pay their support, if they feel their income has been fairly evaluated.

✓ **Healthy Community**

The FOC program has a direct impact on the healthy community strategic priority. By investigating and making recommended orders for custody and parenting time, this contributes to a healthy community by providing appropriate and safe parenting time and custody arrangements. In some cases, supervised parenting time may be appropriate, therapeutic services may be necessary, or non-traditional approaches for parenting may be required.

The ADR and Investigation Department works with parents to evaluate the best interests of children to create a healthy environment for that child to develop. This may include court ordered mental health assessments and/or counseling, drug and alcohol counseling, and anger management or parenting classes. The Enforcement Unit contributes to a healthy community by enforcing court ordered child support to ensure that the basic needs of children and families are met. In addition, the Enforcement Unit enforces court ordered

Friend of the Court

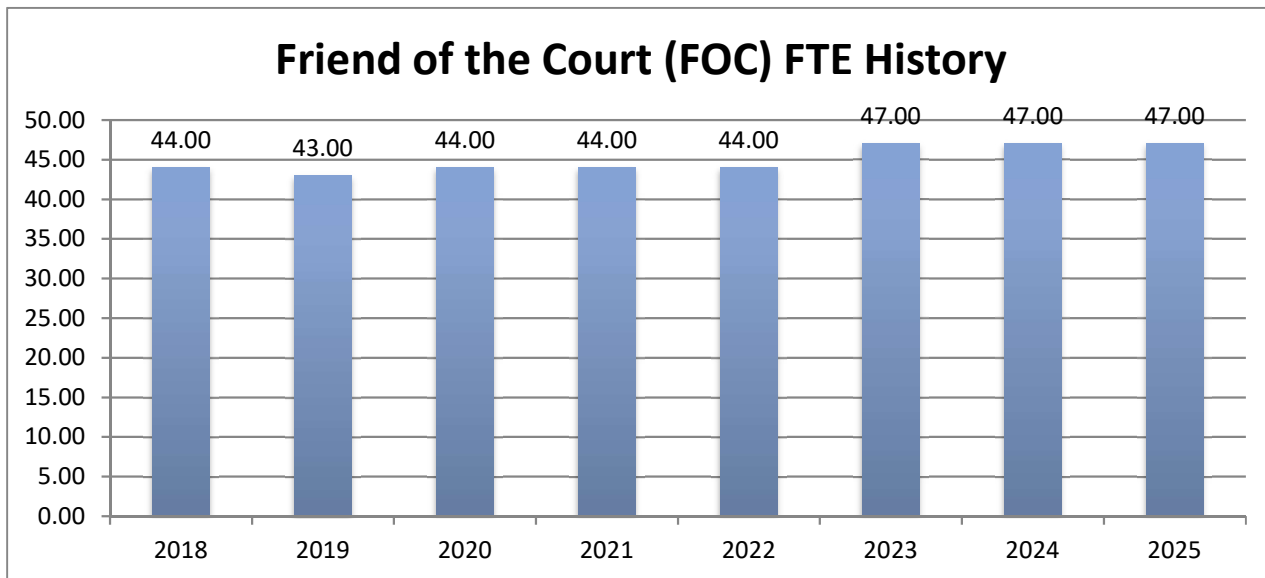
health insurance provisions and delinquent medical bills, which all directly relate to a healthy community. Reporting suspected child abuse and neglect also contributes to a healthy community by providing intervening services for the children at risk of abuse or neglect.

Accomplishments

- ✓ Enforcement / Arrears Management: Passed all Contract Performance Standards set forth in the IV-D contract between the FOC and Office of Child Support (OCS).
- ✓ Total Child Support Payments Distributed: \$19.9 million.
- ✓ Total number of ADR processes (mediation) held: 321
- ✓ Total number of child support, custody investigations, and parenting time investigations: 588
- ✓ Total number of hearings held related to custody, parenting time, and support: 1,320
- ✓ Total number of contempt hearings related to parenting time and support: 2,831

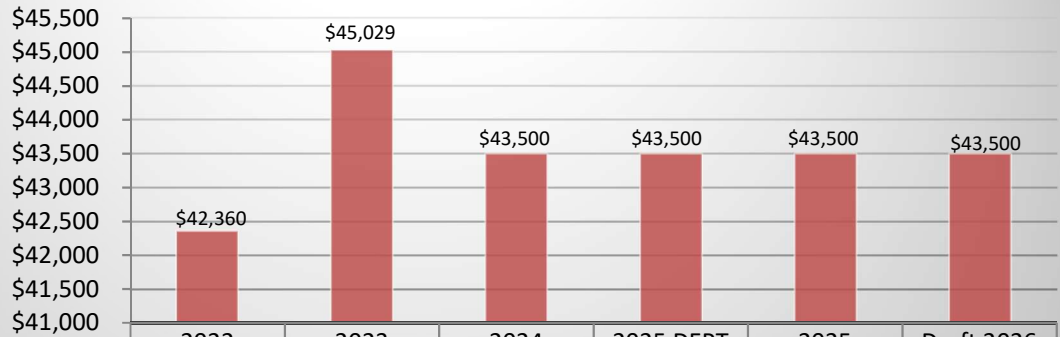
Budget Adjustments

No significant budget adjustments.



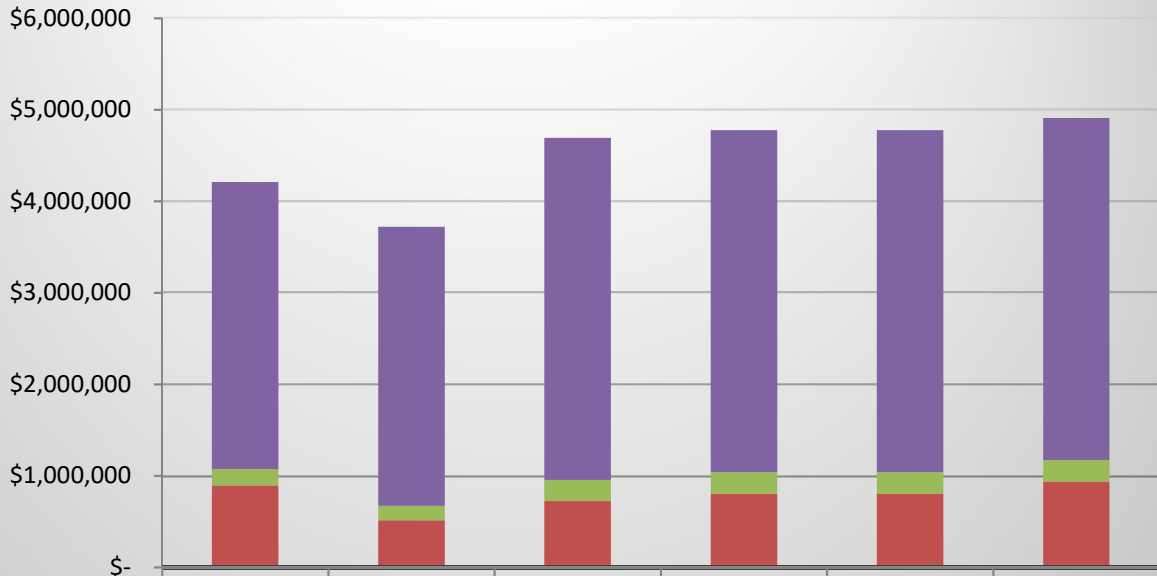
Friend of the Court

Child Support Enforcement Revenues



	2022 ACTUAL	2023 ACTUAL	2024 BUDGET	2025 DEPT REQUESTED	2025 BUDGET	Draft 2026 BUDGET
■ CHARGES/FEES	\$42,360	\$45,029	\$43,500	\$43,500	\$43,500	\$43,500
TOTAL PROGRAM REVENUE	\$42,360	\$45,029	\$43,500	\$43,500	\$43,500	\$43,500

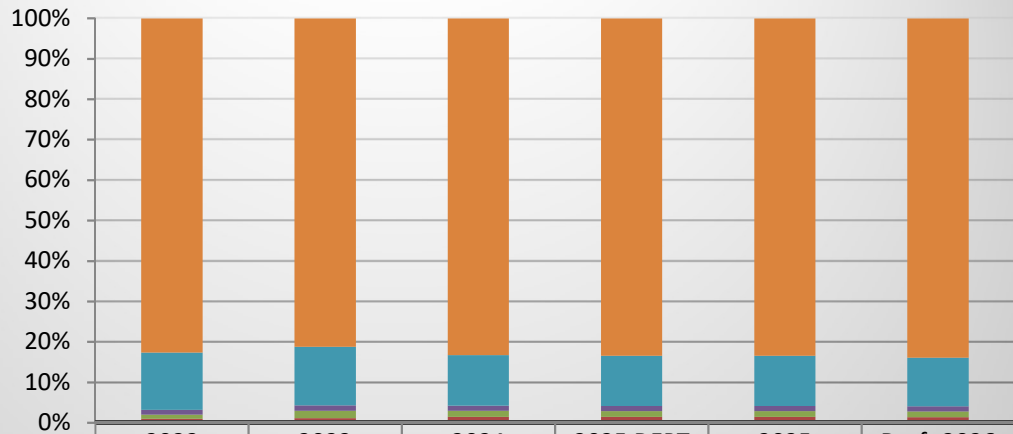
FOC Duties Revenues



	2022 ACTUAL	2023 ACTUAL	2024 BUDGET	2025 DEPT REQUESTED	2025 BUDGET	Draft 2026 BUDGET
■ INTERGOVERNMENTAL	\$3,134,940	\$3,047,235	\$3,738,171	\$3,738,171	\$3,738,171	\$3,738,171
■ CHARGES/FEES	\$177,370	\$157,053	\$232,344	\$232,344	\$232,344	\$232,344
■ TRANSFER IN	\$896,796	\$515,112	\$722,513	\$805,012	\$805,012	\$939,093

Friend of the Court

FOC Expenditures



	2022 ACTUAL	2023 ACTUAL	2024 BUDGET	2025 DEPT REQUESTED	2025 BUDGET	Draft 2026 BUDGET
PERSONNEL SERVICES	\$3,348,965	\$3,418,205	\$3,946,613	\$4,023,170	\$4,023,170	\$4,157,157
TRANSFER OUT	\$573,669	\$608,901	\$589,439	\$595,381	\$595,381	\$595,475
SUPPLIES & MATERIALS	\$48,430	\$54,739	\$60,985	\$60,985	\$60,985	\$60,985
CONTRACT SERVICES	\$42,902	\$77,193	\$72,191	\$72,191	\$72,191	\$72,191
OTHER EXPENSES	\$25,164	\$29,024	\$52,300	\$52,300	\$52,300	\$52,300
CAPITAL OUTLAY	\$13,393	\$18,304	\$15,000	\$15,000	\$15,000	\$15,000

Friend of the Court

Strategic Outcomes

<u>Indicator</u>	<u>2020 Actual</u>	<u>2021 Actual</u>	<u>2022 Actual</u>	<u>2023 Actual</u>	<u>2024 Target</u>	<u>2025 Target</u>
Current Support Percentage Collected	81.3	80.9	80.4	80.1	81	81
Percent of cases receiving arrears collections	81.2	76.6	68.3	66.4	70	73
Total Support Distributed	\$25,615,804	\$22,500,100	\$19,891,118	\$19,932,903	\$20 million	\$20 million

Other Key Indicators

<u>Indicator</u>	<u>2020 Actual</u>	<u>2021 Actual</u>	<u>2022 Actual</u>	<u>2023 Actual</u>	<u>2024 Target</u>	<u>2025 Target</u>
Total number of Cases	12,738	12,451	11,562	11,287	11,000	11,000
Telephone calls handled	20,416	21,163	20,536	20,596	21,000	21,000
Conciliations/investigations completed	274	442	355	314	350	350
Support reviews completed	765	532	620	537	600	600
Support Show Cause Hearings held	2001	1450	2,374	2,831	3,500	3,500
% Cases with locate action within 30 days	88.3%	94.8%	92.4%	85.3	75%	75%
% Support Reviews within 180 days	92.1%	99.2%	98.0%	99.6%	75%	75%
Average wait time per phone call (min)	1 min 36 sec	1 min 5 sec	0 min 50 sec	1 min 28 sec	2 min	2 min
% Cases with timely enforcement action	91.6%	94.1%	95.3%	94.4%	75%	75%
Grievances Acknowledged / Total	2/9	1 / 4	0 / 2	0 / 10	2 / 10	2 / 10