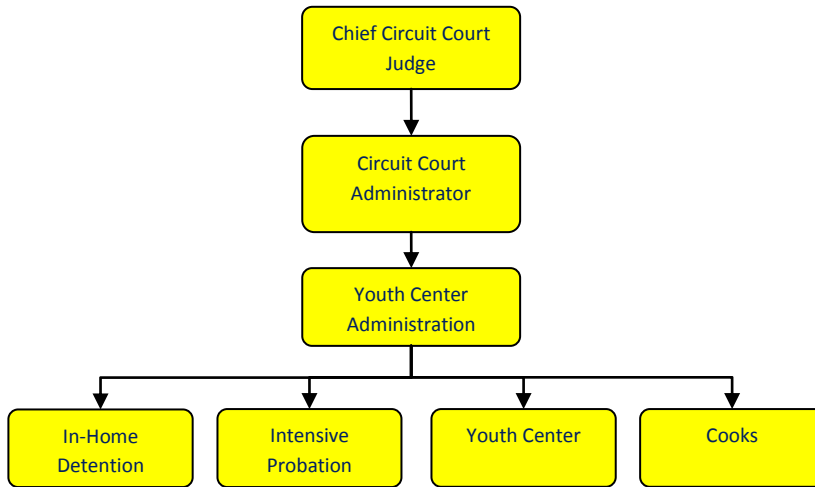


Intensive Probation

Activities



Mission Statement

It is the Mission of the Youth Center is to demonstrate positive leadership as we provide services to youth and their families in an encouraging, culturally sensitive and caring way. It is the Vision of the Youth Jackson County Center, in partnership with all associated agencies, to provide for the safety, well-being, dignity and positive development of every person we serve.



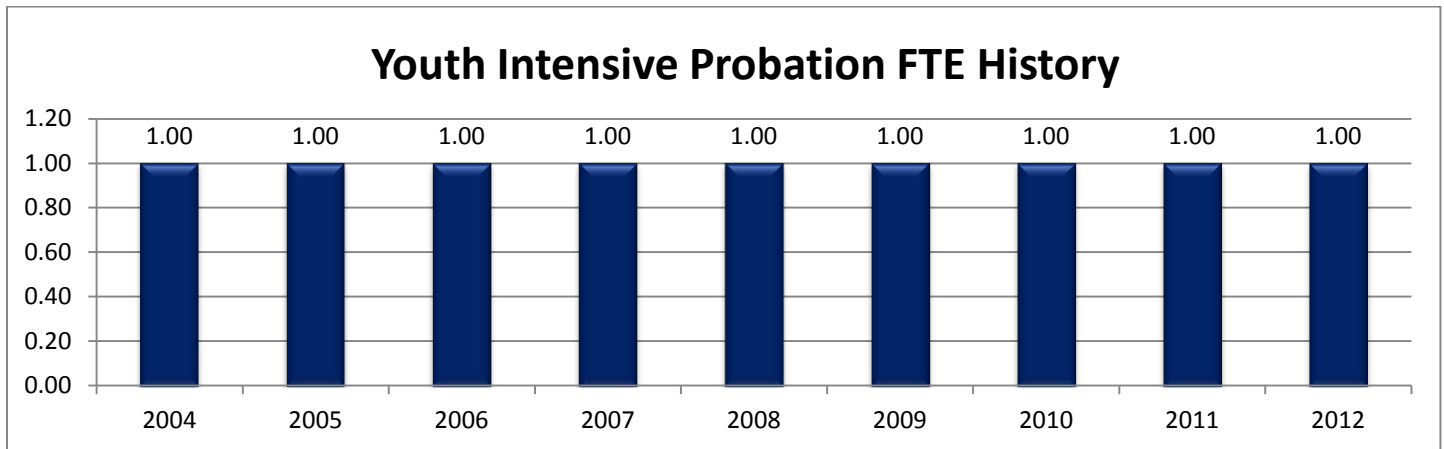
Strategic Plan Impact

✓ Safe Community

The Intensive Probation Officer is on call 24 hours a day to manage a case load of up to 12 juvenile offenders, who are moderate to high risk mostly habitual from being detained or placed in out of home care which is a much higher cost. The Juvenile Intensive Probation Officer is one of the required probation positions under the Child Care Fund. It continues to be extremely helpful having an intensive probation officer who is on call to help manage up to 12 youth that were in imminent probability of being detained. This program is directly geared at keeping these at risk children at home, and not in out of home placement, helping to reduce the Child Care Fund costs. The program expenses are reimbursed at 50% thru the Child Care Fund.

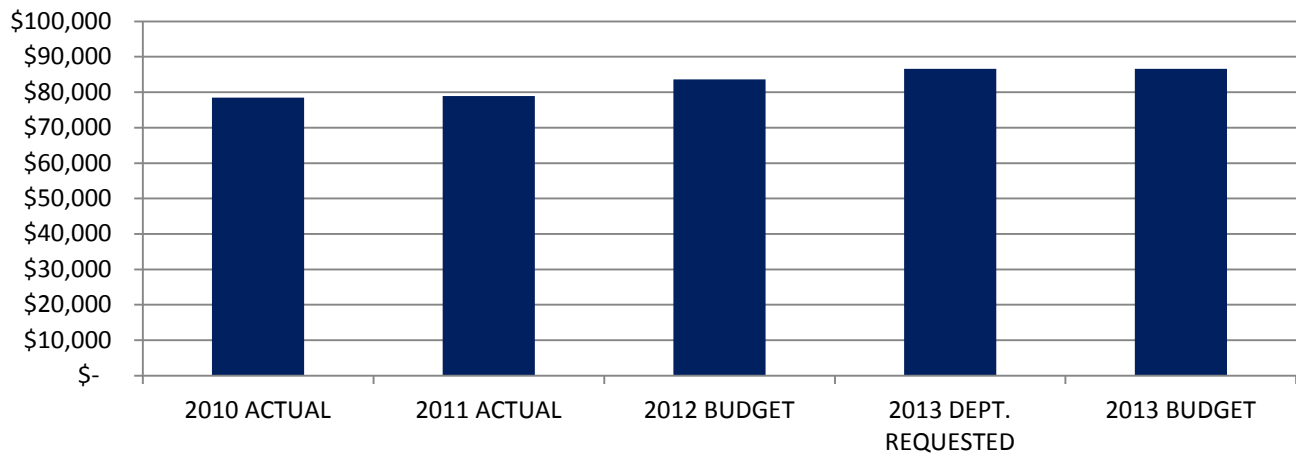
Accomplishments

Budget Adjustments



Expenditure History					
	2010 <u>ACTUAL</u>	2011 <u>ACTUAL</u>	2012 <u>BUDGET</u>	2013 DEPT <u>REQUESTED</u>	2013 <u>BUDGET</u>
PERSONNEL SERVICES	75,417	77,299	79,600	82,567	82,567
CONTRACT SERVICES	331	-	500	500	500
OTHER EXPENSES	2,753	1,668	3,520	3,520	3,520
TOTAL PROGRAM COST	\$78,501	\$78,967	\$83,620	\$86,587	\$86,587

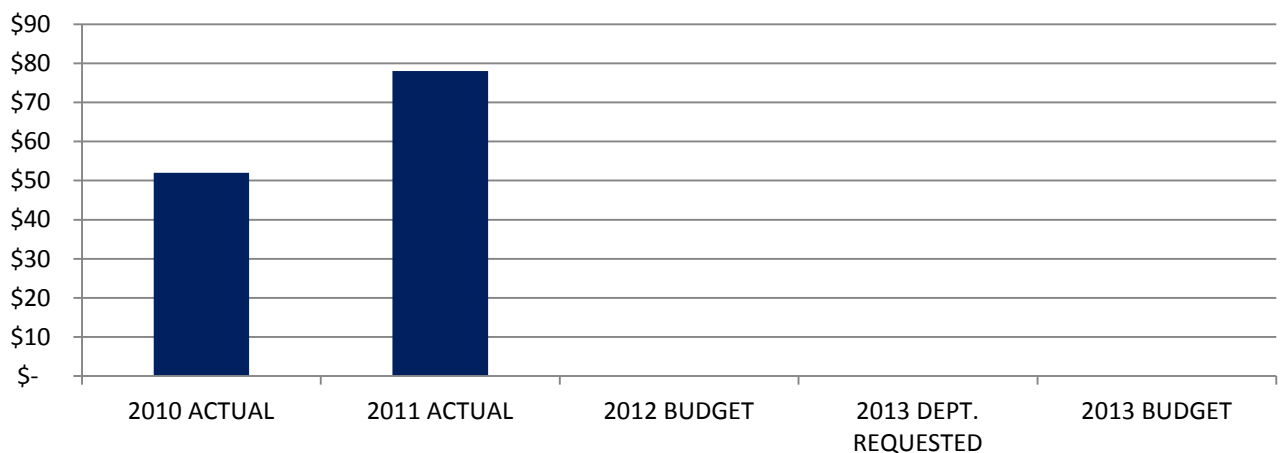
Youth Intensive Probation Expenditures



Revenue History

	2010 <u>ACTUAL</u>	2011 <u>ACTUAL</u>	2012 <u>BUDGET</u>	2013 DEPT <u>REQUESTED</u>	2013 <u>BUDGET</u>
OTHER	52	78	-	-	-
TOTAL PROGRAM COST	\$0	\$78	\$0	\$0	\$0

Youth Intensive Probation Revenues



See youth center program budget for performance data.



This page intentionally left blank.