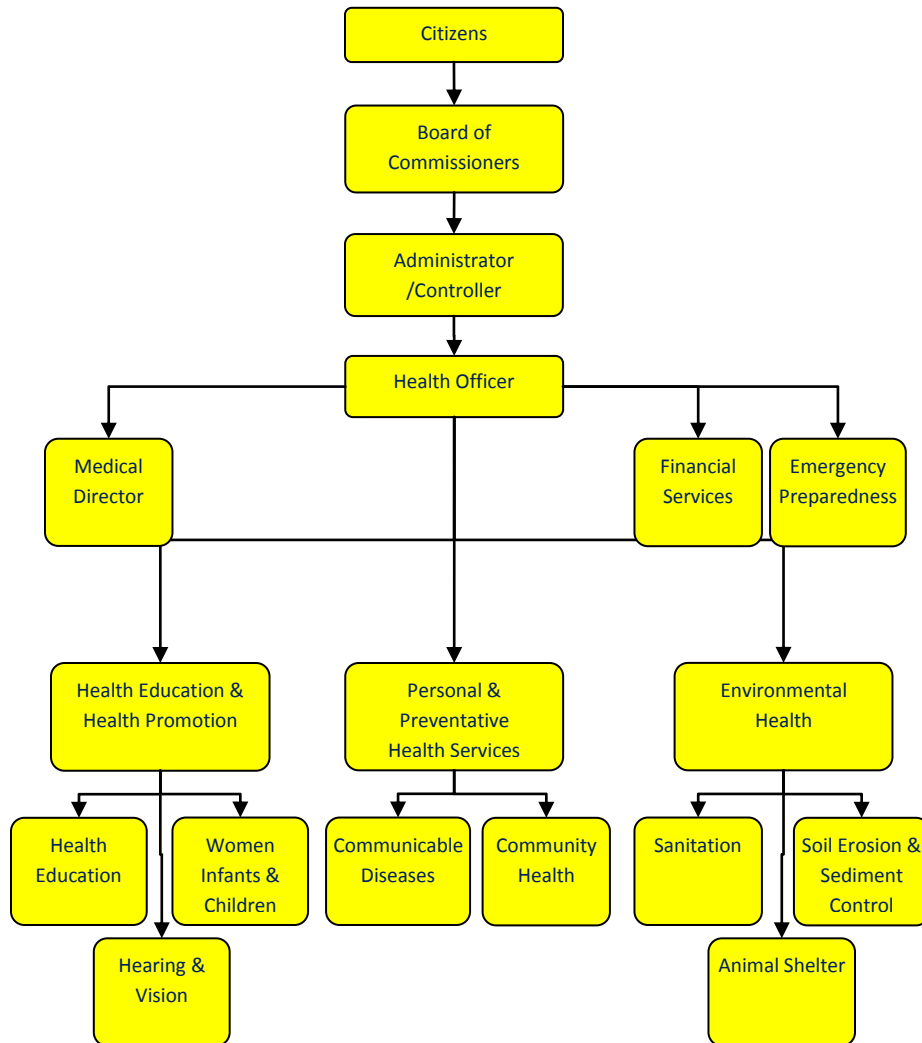


# Soil Erosion & Sediment Control



## Activities

Soil erosion & sediment control is a state and federal mandated program. Issue Soil Erosion Permits in accordance with Part 91 of the Natural Resources & Environmental Protection Act.

## Mission Statement

Jackson County government, in cooperation with the community and local government units, strives through a planned process to deliver quality services that address public needs.



## Strategic Plan Impact

✓ **Healthy Community**

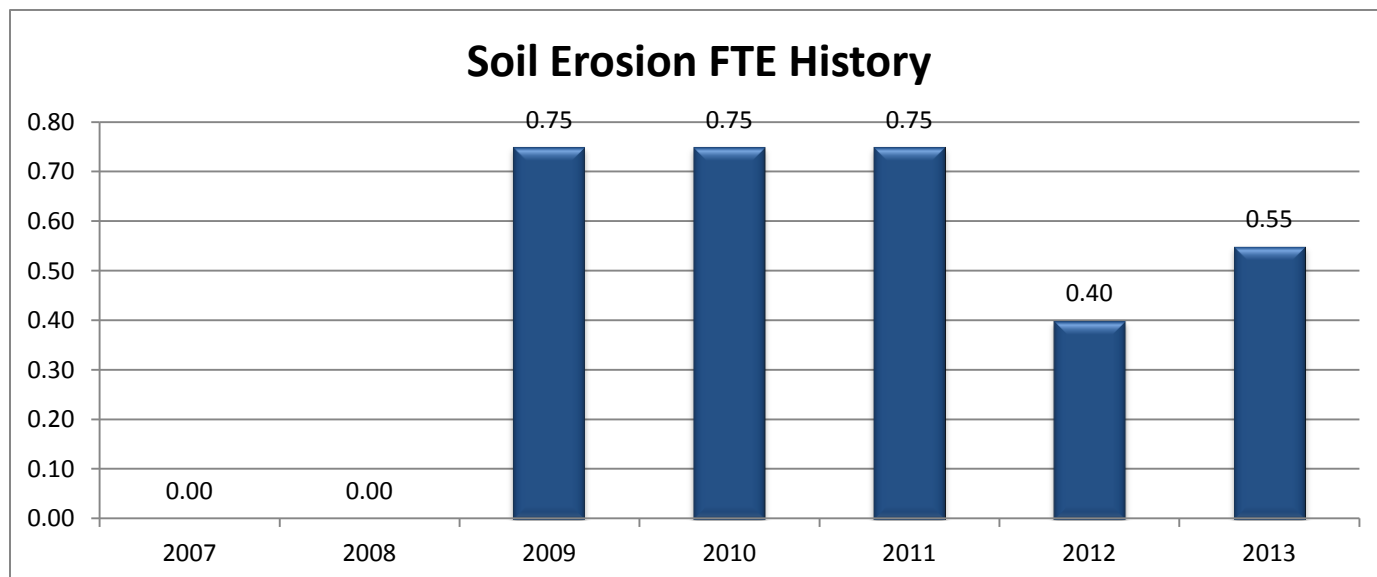
To operate the soil erosion program in accordance with Part 91 of the Natural Resources and Environmental Protection Act. This program helps ensure that our lakes, rivers and streams are protected from sediment runoff; thus, allowing our citizens to enjoy our natural resources.

## Accomplishments

- ✓ We fully integrated the program into Environmental Health in 2008. We are operating the program in accordance with Part 91 of the Natural Resources and Environmental Protection Act, 1994, PA 451, as amended.

## Budget Adjustments

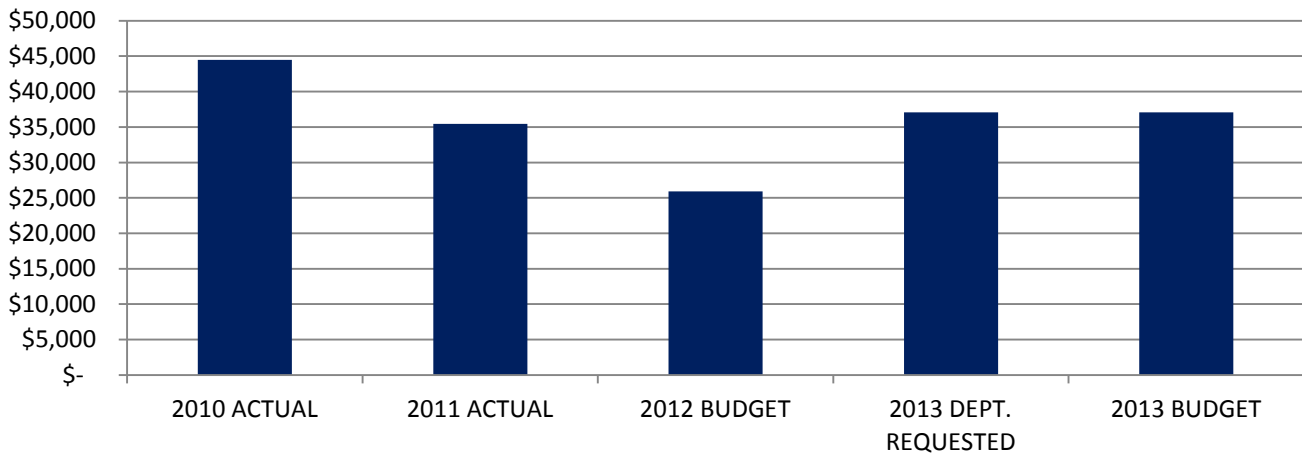
The 2012 budget contains .35 less full-time-equivalent employees in this program.



## Expenditure History

	2010 <u>ACTUAL</u>	2011 <u>ACTUAL</u>	2012 <u>BUDGET</u>	2013 DEPT <u>REQUESTED</u>	2013 <u>BUDGET</u>
PERSONNEL SERVICES	44,484	35,455	24,920	36,084	36,084
OTHER EXPENSES	-	-	1,000	1,000	1,000
<b>TOTAL PROGRAM COST</b>	<b>\$44,484</b>	<b>\$35,455</b>	<b>\$25,920</b>	<b>\$37,084</b>	<b>\$37,084</b>

## Soil Erosion Expenditures



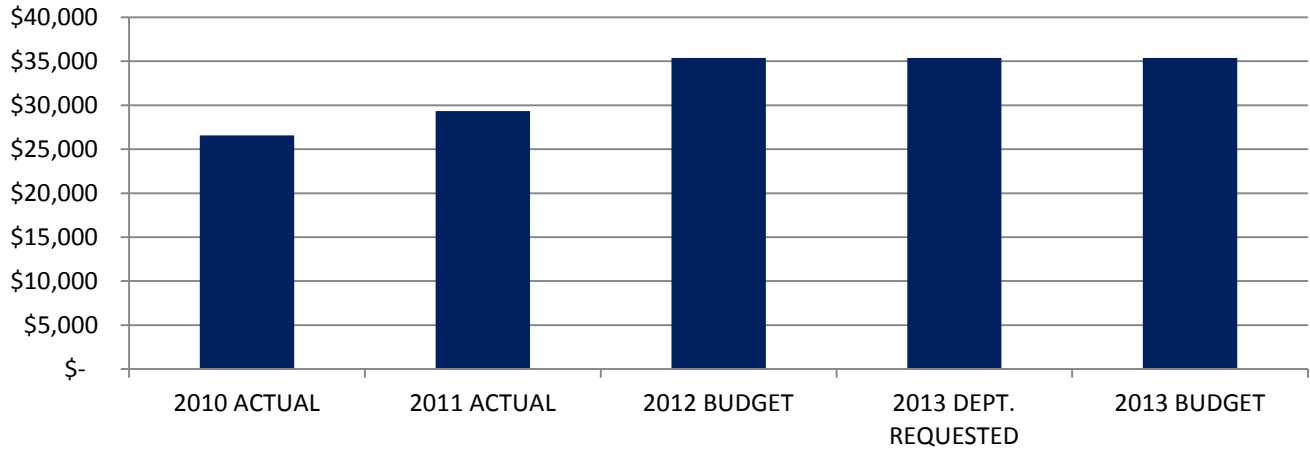
## Expenditure History

	2010 <u>ACTUAL</u>	2011 <u>ACTUAL</u>	2012 <u>BUDGET</u>	2013 DEPT <u>REQUESTED</u>	2013 <u>BUDGET</u>
PERSONNEL SERVICES	44,484	35,455	24,920	36,084	36,084
OTHER EXPENSES	-	-	1,000	1,000	1,000
<b>TOTAL PROGRAM COST</b>	<b>\$44,484</b>	<b>\$35,455</b>	<b>\$25,920</b>	<b>\$37,084</b>	<b>\$37,084</b>

## Revenue History

	2010 <u>ACTUAL</u>	2011 <u>ACTUAL</u>	2012 <u>BUDGET</u>	2013 DEPT <u>REQUESTED</u>	2013 <u>BUDGET</u>
CHARGES/FEES	24,690	28,630	33,695	33,695	33,695
INTERST/RENTS	-	-	315	315	315
OTHER	1,890	690	1,375	1,375	1,375
<b>TOTAL PROGRAM COST</b>	<b>\$26,580</b>	<b>\$29,320</b>	<b>\$35,385</b>	<b>\$35,385</b>	<b>\$35,385</b>

## Soil Erosion Revenues



## Strategic Outcomes

Indicator	2008 Actual	2009 Actual	2010 Actual	2011 Actual	2012 Target	2013 Target

## Other Key Indicators

Indicator	2008 Actual	2009 Actual	2010 Actual	2011 Actual	2012 Target	2013 Target
Soil Erosion Permits Issued	N/A	100	85		125	