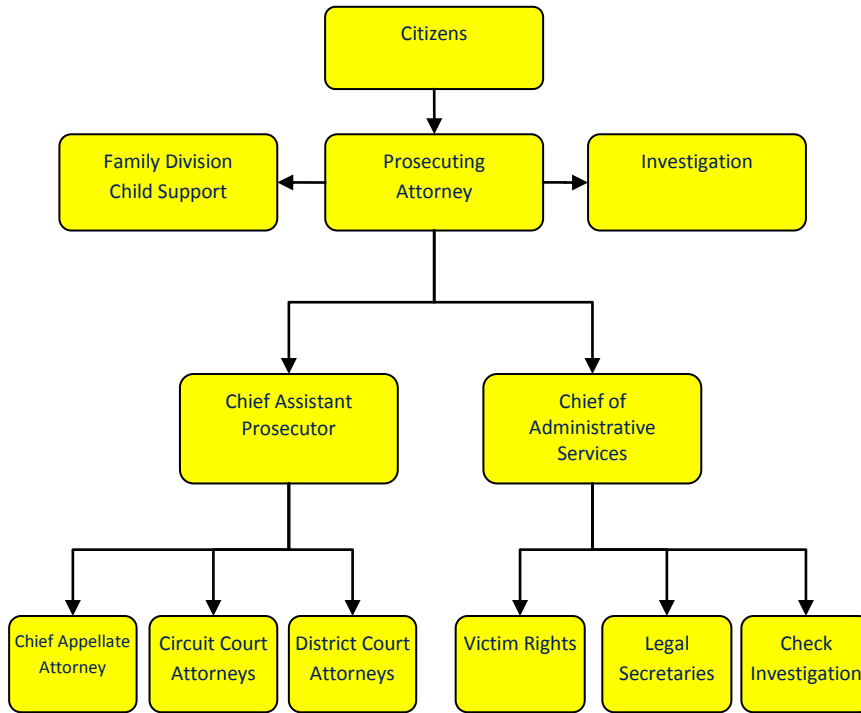


Family Division



Activities

Pursuant to a Cooperative Reimbursement Agreement with the Department of Human Services, the division seeks to establish paternity and child support orders.

We also spend time cleaning up old cases for the Office of Child Support and fielding calls for the FOC.

Mission Statement

The sole mission of the Family Division of the Prosecuting Attorney’s Office is to obtain child support and paternity orders for TANF and non-TANF custodial parents pursuant to requirements of Michigan law and an agreement with the Michigan Department of Human Services.



Strategic Plan Impact

✓ **Safe Community**

The child support program advances community safety by establishing paternity and child support orders for over 1,000 children in Jackson County each year. The benefits to the community are widespread in that it helps keep kids in school, daycare, and off the streets

✓ **Economic Development**

This program advances economic development in that a custodial parent who receives child support for his/her children will spend money in the community on food, clothing, shelter, etc...Further, some of these children will be able to go off state assistance with the financial support of both parents. Children will have more educational opportunities.

✓ **Healthy Community**

The child support program advances a healthy community. Children that are supported by both parents have better access to health care and more access to medical treatment. When children are better taken care of, they present less of a health risk to their peers at school and daycare.

✓ **Recreational & Cultural Opportunities**

When children are supported by both parents, they have more opportunities to engage in recreational and cultural activities. Financially, they have more financial resources available to them to allow them to engage in such activities and development.

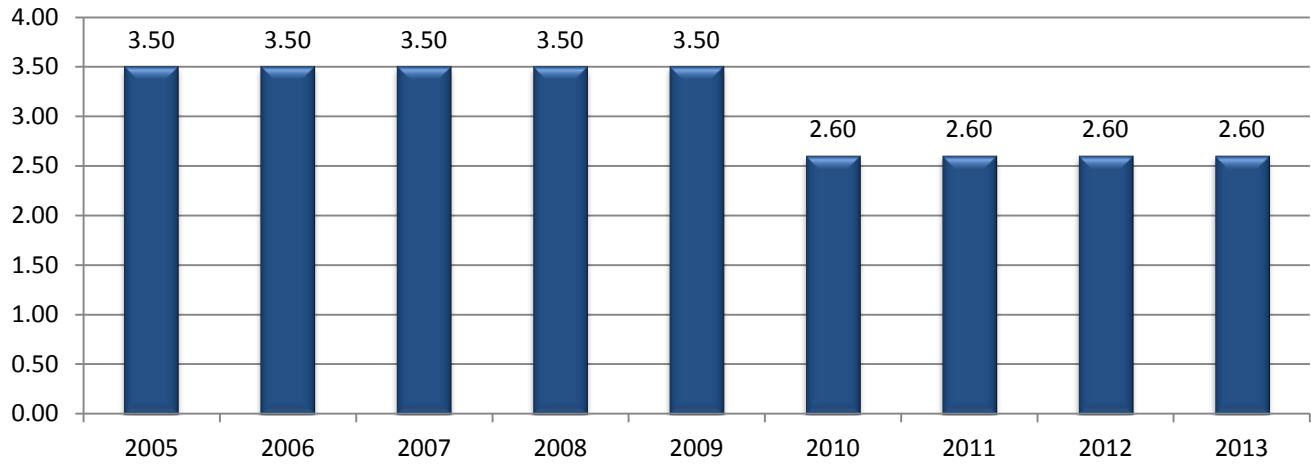
Accomplishments

- ✓ With all of the budget challenges and cuts, we have managed to increase our efficiency and our output significantly. We are constantly working to streamline our daily functions and we are continually improving our establishment procedures. This results in more child support going to parents to support the children in Jackson County.
- ✓ We have reduced our full time staff by 50% since 2003, and by 33% since 2008. We are obtaining more orders than in 2003, with less staff, and every year we increase that number. This amounts to more children being financially supported by both parents. The child support program is a necessary state and federal mandated program. It is imperative to the future of our children and our local economy to have these children supported by their parents.

Budget Adjustments

There are no significant budget adjustments to this program.

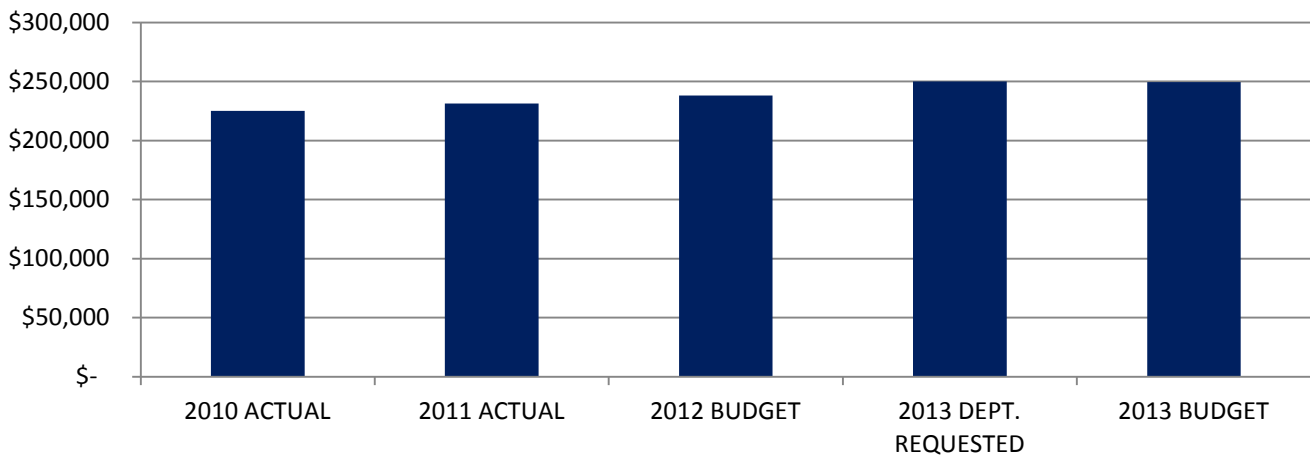
Prosecuting Attorney/Family Division FTE History



Expenditure History

	2010 <u>ACTUAL</u>	2011 <u>ACTUAL</u>	2012 <u>BUDGET</u>	2013 DEPT <u>REQUESTED</u>	2013 <u>BUDGET</u>
PERSONNEL SERVICES	209,589	214,614	221,751	233,655	233,655
SUPPLIES & MATERIALS	7,923	8,788	7,290	7,290	6,990
CONTRACT SERVICES	6,835	6,539	7,200	7,200	7,200
OTHER EXPENSES	781	1,396	1,900	1,900	1,300
TOTAL PROGRAM COST	\$225,128	\$231,337	\$238,141	\$250,045	\$249,145

Prosecuting Attorney/ Child Support Expenditures

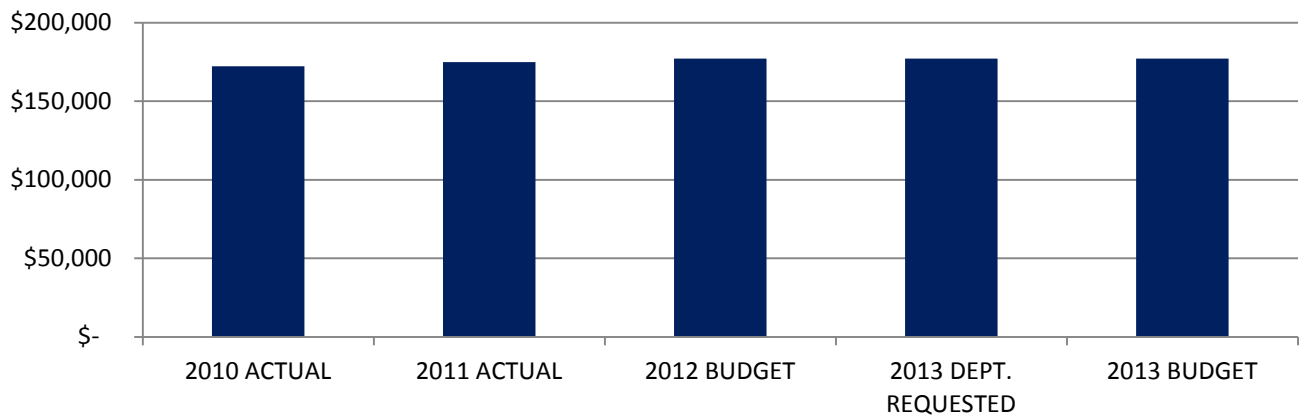


Prosecuting Attorney

Revenue History

	2010 <u>ACTUAL</u>	2011 <u>ACTUAL</u>	2012 <u>BUDGET</u>	2013 DEPT <u>REQUESTED</u>	2013 <u>BUDGET</u>
INTERGOVERNMENTAL	172,134	174,869	177,203	177,203	177,203
TOTAL PROGRAM COST	\$172,134	\$174,869	\$177,203	\$177,203	\$177,203

Prosecuting Attorney/Child Support Revenues



Strategic Outcomes

<u>Indicator</u>	2008 <u>Actual</u>	2009 <u>Actual</u>	2010 <u>Actual</u>	2011 <u>Actual</u>	2012 <u>Target</u>	2013 <u>Target</u>
Child Support Orders Established	643	600	530	No Submission	600	No Submission
Paternity Cases Established	234	219	225	No Submission	220	No Submission

Other Key Indicators

<u>Indicator</u>	2008 <u>Actual</u>	2009 <u>Actual</u>	2010 <u>Actual</u>	2011 <u>Actual</u>	2012 <u>Target</u>	2013 <u>Target</u>
In Office Meetings With Parents	1,417	1,028	1,431	No Submission	1,400	No Submission
Full-time Employees	2.5	2	2	No Submission	2	No Submission
Cases Established Full-time Employee	257	300	300	No Submission	300	No Submission
Avg # of Weeks from Filing to Obtaining a Support Order	12	10	10	No Submission	10	No Submission