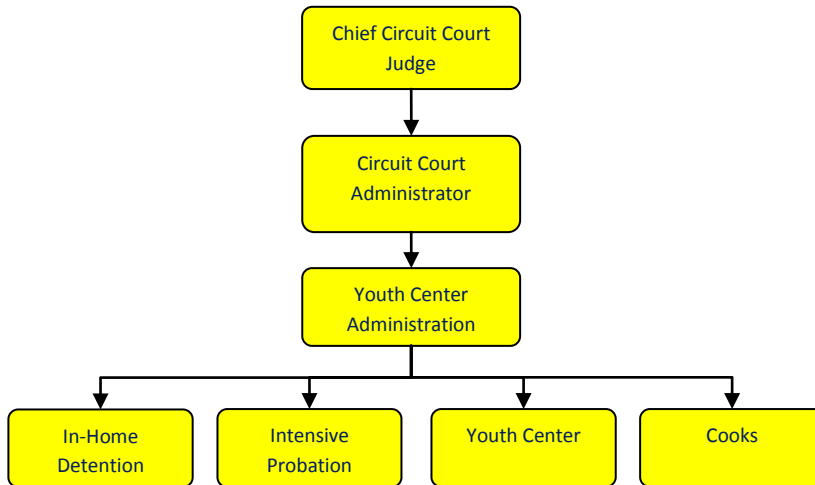


Probate Court Child Care



Activities

This department accounts for the costs charged back to the County for care of juveniles in the State system.

Mission Statement

It is the Mission of the Youth Center is to demonstrate positive leadership as we provide services to youth and their families in an encouraging, culturally sensitive and caring way. It is the Vision of the Youth Center, in partnership with all associated agencies, to provide for the safety, well-being, dignity and positive development of every person we serve.

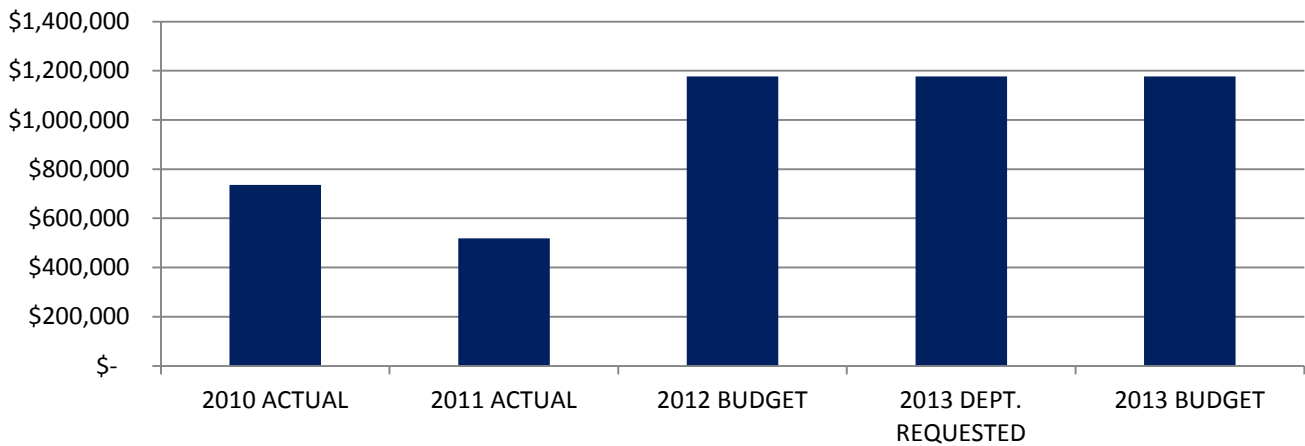


Youth Center

Expenditure History

	2010 <u>ACTUAL</u>	2011 <u>ACTUAL</u>	2012 <u>BUDGET</u>	2013 DEPT <u>REQUESTED</u>	2013 <u>BUDGET</u>
OTHER EXPENSES	735,622	518,635	1,177,000	1,177,000	1,177,000
TOTAL PROGRAM COST	\$735,622	\$518,635	\$1,177,000	\$1,177,000	\$1,177,000

Juvenile Probate



Revenue History

	2010 <u>ACTUAL</u>	2011 <u>ACTUAL</u>	2012 <u>BUDGET</u>	2013 DEPT <u>REQUESTED</u>	2013 <u>BUDGET</u>
TOTAL PROGRAM COST	\$0	\$0	\$0	\$0	\$0