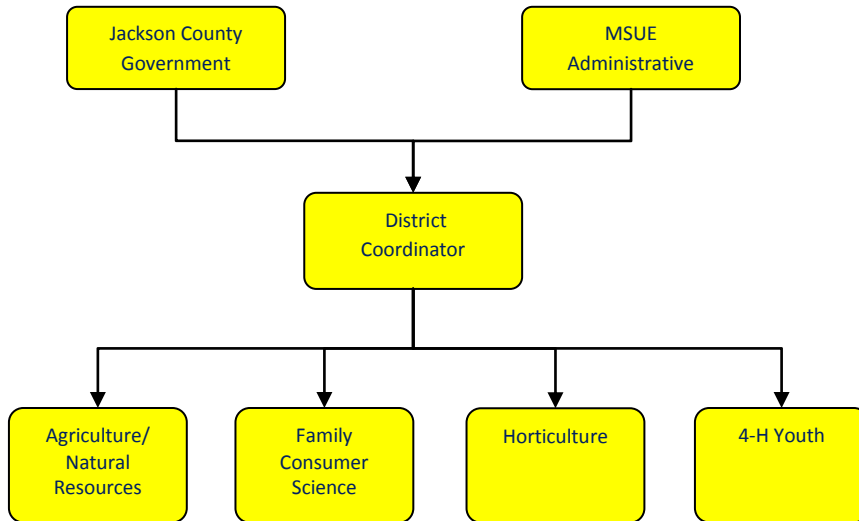


MSU Extension



Activities

Provide educational programming in agriculture and natural resources, land use, watershed and pesticide management and farm financial stability. Provide educational materials through Connections and the website.

Provide educational programming to pork producers (including principal enterprise and youth) throughout the state in regard to swine production management and nutrition.

Extension 4-H Youth Program -works with youth ages 5-19 and adult volunteers in skill training in character development, leadership, self-esteem and healthy life style choices.

Provide Jackson County residents with educational programs on care and maintenance of their land.

Provide educational programs and information through use of media, one-on-one contact, and educational classroom setting.

Provide educational leadership to create an economical and sociological sustainable agriculture to retain farmers, farmland, open space and the resulting quality of life, rural America work ethic, and a moral sociological influence.

Mission Statement

Jackson County is an educational leader working with local citizens, government and community organizations, which is based on university research and involves learners in setting goals and applying knowledge for a better life.

Strategic Plan Impact

✓ **Safe Community**

MSU Extension supports the safe community strategic goal helping to create self-sustaining people. MSU Extension works with county residents to provide needed life skills to have youth involved in productive activities with volunteer mentors.

✓ **Economic Development**

MSUE provides educational programs to increase business skills in development, sustainability and future opportunities to ensure continued growth and vibrancy.

✓ **Healthy Community**

MSUE provides information and technical assistance in how to achieve a healthy lifestyle in the areas of food and nutrition, growth and development and resource management.

✓ **Recreational & Cultural Opportunities**

MSUE provides recreational and cultural activities to the citizens of Jackson County through programs that encourage use of our natural resources, wholesome family activities and opportunities to engage in cultural and educational events.

Accomplishments

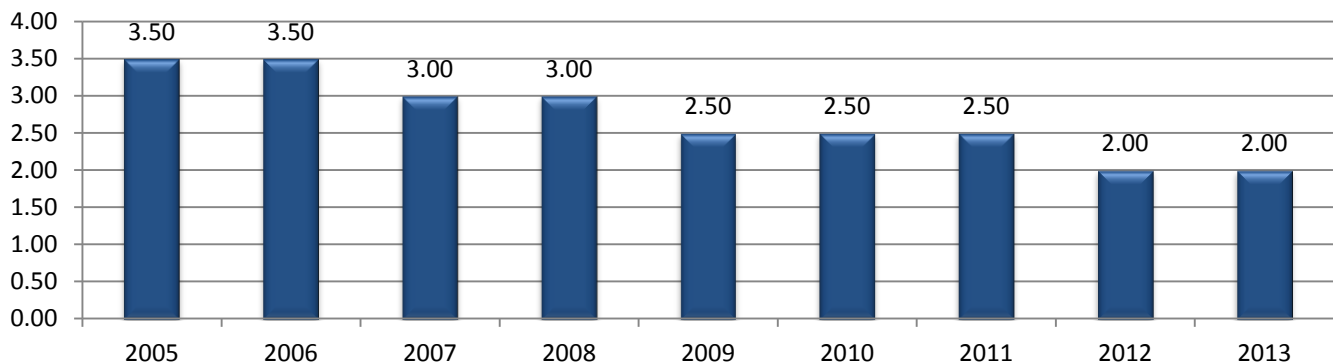
- ✓ **Healthy Communities:** Breast Feeding Initiative works with limited resource moms providing support and education for breastfeeding. Research has shown that breastfeeding supports healthy development of infants and impacts the health of the mother. Jackson County Breast Feeding Initiative works to encourage and support breastfeeding that impacts the health and resources of the family. In Jackson County 96% of moms enrolled in the program initiated breast feeding which gives the infants a healthy start and has a positive impact on the health of the mom.
- ✓ **Healthy Communities:** Nutrition and physical activity programming helps adults change behaviors related to an increase in the adoption of healthy food practices. Results of a series of educational programs indicate that participants report an increase in the consumption of fresh fruits and vegetables, whole grains, and low-fat or fat-free milk and milk products. Reports also indicate that participants increase their time spent in physical activity on a weekly basis.
- ✓ **Economic Development:** In order for a farmer to sell swine in Michigan they need to have a special certification called Pork Quality Assurance Certification. MSU Extension is the primary deliverer of this certification in Jackson county and almost exclusive certifier of 4-H youth. Last year, 4-H youth sold 262 hogs for a total of \$150,173.15. These sales would have not happened without the delivery of the Pork Quality Assurance training.

- ✓ **Economic Development:** -One Jackson County sweet corn producer was able to reduce his Nitrogen inputs by at least 40 lbs per acre on his sweet corn acreage with no loss in yield. This reduced his overall cost of production by \$62 based on the 6 acres of sweet corn he had planted.
- ✓ **Economic Development:** One Jackson County pumpkin grower was concerned that a four acre manured pumpkin patch was not getting enough nutrients, due to deficiency symptoms. The grower was looking to add a standard application of nitrogen above and beyond the manure applied to ensure adequate nutrition. Upon examination, the weeds and rye cover crop showed evidence of Clomazone injury. MSU Extension followed up the assessment with a soil test prior to fertilizer application. The test showed that nutrients were sufficient for growing pumpkins, preventing 50 pounds per acre of Nitrogen, 0-150 pounds of P2O5 per acre and 0-200 pounds per acre of K2O from being applied (Based on Midwest Vegetable Production guide)
- ✓ **Economic Development:** MSU Extension deployed Brown Marmorated Stink Bug (BMSB) trapping stations at two area vegetable farms in Jackson County. Weekly monitoring of these traps during the growing season detected no BMSB.
- ✓ **Economic Development:** Over this past year, a co-op of hoop house spinach growers with several members in Jackson County began to aggregate and sell spinach to Allegiance health. A condition of that sale was that the spinach had to be processed in a certified commercial facility. With some negotiation, MSU's Rogers Reserve (8072 S. Jackson Rd) has served as the certified commercial facility. The sales of 80 lbs of spinach per week would not have been possible without the coordination and the facility.
- ✓ **Recreational & Cultural Opportunities:** Science can be defined as the study of the world around us; a thread that runs through all aspects of our lives. Science is the theory that lies behind all 4-H projects. Technology can be defined as the tools and applications of science that help individuals advance their world and their own development. The strength of 4-H lies in its strong volunteer base; its emphasis on hands-on, experiential learning opportunities; programs that connect learning to real-life situations; and its connection to the Land-Grant University system. The Michigan 4-H science and technology program area cuts across all program and project areas. It is also specific projects in 4-H such as aerospace, computers, small engines, electricity, electronics, astronomy and robotics.

MSU Extension

Budget Adjustments There are no significant changes to the county contribution to MSU Extension. MSU Extension has reformed their organizational structure at the state level, which changes the approach to county funding. For 2012 Jackson County will enter into a memorandum of agreement with MSU Extension. A base funding of \$135,567 has been established for Jackson County based on population. Additional educational staff is funded 80% by the county and 20% by MSU Extension. The Board of Commissioners has elected to continue the level of funding currently provided to the County's MSU Extension office. The 2012 recommended budget keeps the current Jackson MSU Extension staff in tact at a total cost of \$294,120, which includes the base funding.

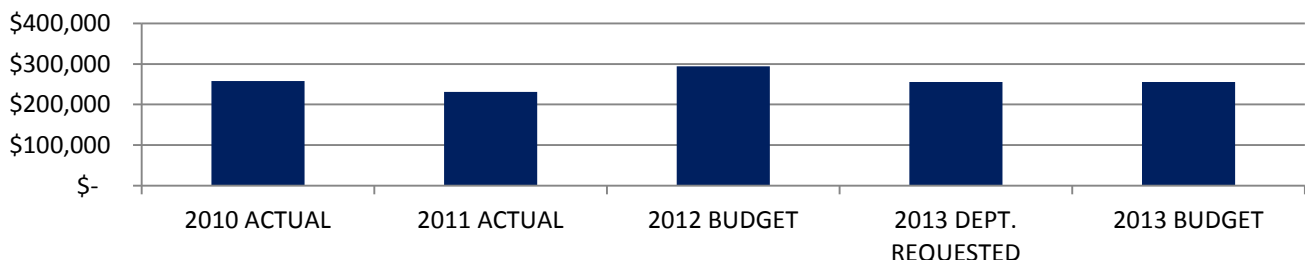
MSU Extension FTE History



Expenditure History

	2010 <u>ACTUAL</u>	2011 <u>ACTUAL</u>	2012 <u>BUDGET</u>	2013 DEPT <u>REQUESTED</u>	2013 <u>BUDGET</u>
PERSONNEL SERVICES	111,280	120,385	101,446	62,871	62,871
SUPPLIES & MATERIALS	15,691	9,000	-	-	-
CONTRACT SERVICES	120,891	83,592	186,874	186,874	186,874
OTHER EXPENSES	10,099	18,232	5,800	5,800	5,800
TOTAL PROGRAM COST	\$257,961	\$231,209	\$294,120	\$255,545	\$255,545

MSU Extension Expenditures



Revenue History

	2010 <u>ACTUAL</u>	2011 <u>ACTUAL</u>	2012 <u>BUDGET</u>	2013 DEPT <u>REQUESTED</u>	2013 <u>BUDGET</u>
TOTAL PROGRAM COST	\$0	\$0	\$0	\$0	\$0

Strategic Outcomes

<u>Indicator</u>	2008 <u>Actual</u>	2009 <u>Actual</u>	2010 <u>Actual</u>	2011 <u>Actual</u>	2012 <u>Target</u>	2013 <u>Target</u>
Number of individuals using soil tests to guide fertilizer applications	276	301	289	252	300	325
Money saved from volunteering	\$43,000	\$41,620	\$45,240	\$45,715	\$46,032	\$49,868

Other Key Indicators

<u>Indicator</u>	2008 <u>Actual</u>	2009 <u>Actual</u>	2010 <u>Actual</u>	2011 <u>Actual</u>	2012 <u>Target</u>	2013 <u>Target</u>
Number of Master Gardener hours	2,130	2,081	3,266	2341	2,500	2500
Connections newsletter circulation via US mail	2,014	2,091	2,000	0	0	0
Connections newsletter circulation via email	385	385	409	3539	4,500	5,000
Youth 5-19 year olds involved in programming	3,820	3,820	3,500	4243	4,500	5,000
Educators	5.5	5.5	5.5	5.5	5.5	5.5
Secretaries	3	2.5	2.5	2	2	2
Program Assistants	3.5	3	2.5	2.5	2.75	2.75
4-H volunteers	261	261	297	300	310	325
Number of youth reached per volunteer	14.6	14.6	19.2	14.1	15	15
Business Counseling - Capital invested & Income generated (per hour)		\$6,386	\$9,600	\$4820	\$4,500	\$5,000
New websites per hour invested	.5	.3	.3	0	0	0
Grower certifications necessary for sale (PQA Plus) (per Hour)	59.7	40.9	42	25	35	35
Food service certifications necessary for sale (ServSafe) (per Hour)	1.2	1.05	1	1	1	1
ServSafe pass rates	90%	89%	89%	89%	90%	90%



This page intentionally left blank.