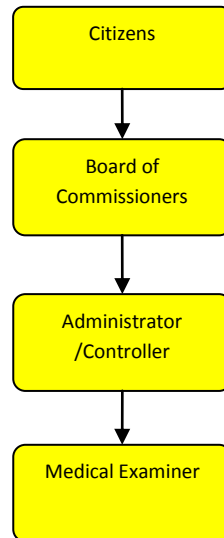


Medical Examiner



Activities

It is the duty of this office to investigate in certain instances the cause and manner of death within this county due to acts of violence, negligence or omission of a criminal nature and/or threats to protect public health.

Our office consists of two actual employees, the Medical Examiner and his Assistant.

The services of pathology assistants, forensic pathologists, forensic dentists, body removal services, field investigators, morgue facilities, etc., are either contracted or are on a fee for service basis.

All service providers work on an on-call basis and respond when needed, coordinating their efforts to be most effective.



Mission Statement

It is the mission of this office to complete an efficient, professional and dignified investigation of any death reported to this office which falls under the guidelines set forth by the State of Michigan and having occurred within the County of Jackson in order to determine cause and manner of death.

Strategic Plan Impact

✓ **Safe Community**

This is a State mandated office which has a direct impact on the safety of the community as we are responsible for investigating sudden & unexpected deaths. For example, the information gathered provides direct support for prosecution in criminal matters, or can be provided to families when the potential for a genetic problem is identified, therefore possibly saving lives in the future. Our office by and through our investigations prevents repeat injuries and works to identify any potential threat to the public health.

✓ **Healthy Community**

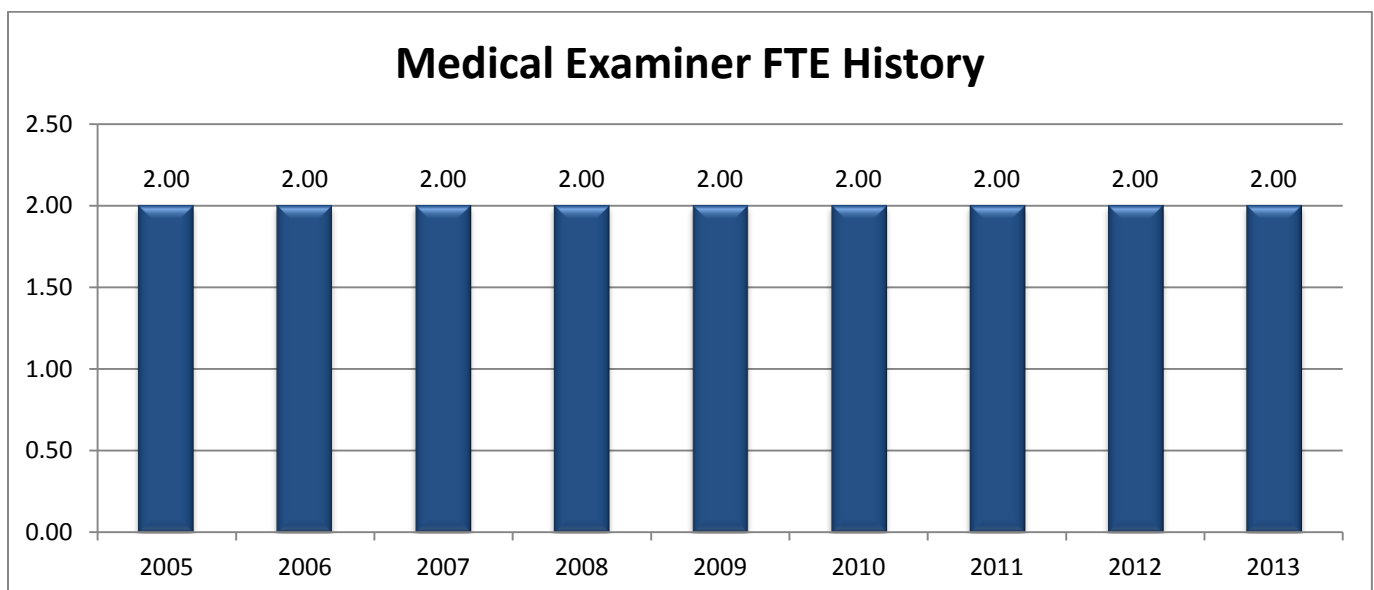
We help to provide critical and time sensitive information regarding the deaths in the community to protect the health and welfare of our citizens as well as establishing trends to be addressed to promote a healthier community.

Accomplishments

- ✓ Integrated the new Electronic Death Registration System (EDRS) for the State of Michigan into our daily operations.
- ✓ Operating one of the first two pilot sites of the EDRS in the state providing continuous feedback to improve the system.

Budget Adjustments

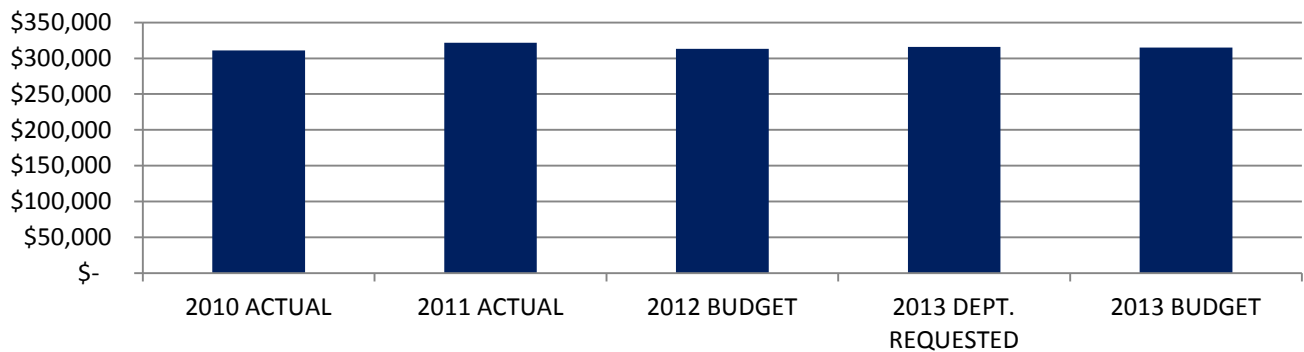
There are no significant budget adjustments to this program.



Expenditure History

	2010 <u>ACTUAL</u>	2011 <u>ACTUAL</u>	2012 <u>BUDGET</u>	2013 DEPT <u>REQUESTED</u>	2013 <u>BUDGET</u>
PERSONNEL SERVICES	84,039	85,290	87,826	90,459	90,459
SUPPLIES & MATERIALS	3,231	11,843	5,700	5,700	5,700
CONTRACT SERVICES	216,360	217,342	208,950	208,950	208,950
OTHER EXPENSES	7,264	7,396	10,577	10,577	9,777
TOTAL PROGRAM COST	\$310,894	\$321,871	\$313,053	\$315,686	\$314,886

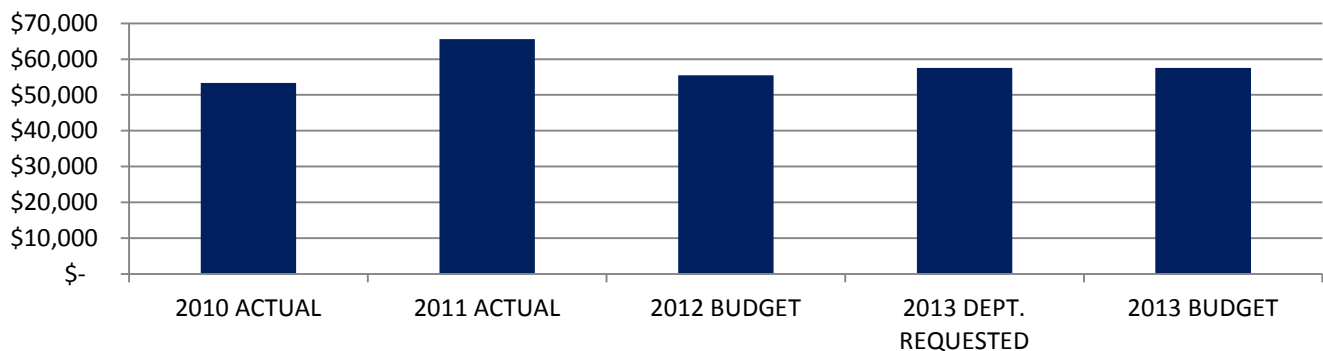
Medical Examiners Expenditures



Revenue History

	2010 <u>ACTUAL</u>	2011 <u>ACTUAL</u>	2012 <u>BUDGET</u>	2013 DEPT <u>REQUESTED</u>	2013 <u>BUDGET</u>
CHARGES/FEES	53,333	65,622	55,500	57,500	57,500
TOTAL PROGRAM COST	\$53,333	\$65,622	\$55,500	\$57,500	\$57,500

Medical Examiner Revenues



Strategic Outcomes

<u>Indicator</u>	<u>2008 Actual</u>	<u>2009 Actual</u>	<u>2010 Actual</u>	<u>2011 Actual</u>	<u>2012 Target</u>	<u>2013 Target</u>
Percent of respondents who say they feel very or somewhat safe from violent crime	N/A	50%	N/D		N/D	

Other Key Indicators

<u>Indicator</u>	<u>2008 Actual</u>	<u>2009 Actual</u>	<u>2010 Actual</u>	<u>2011 Actual</u>	<u>2012 Target</u>	<u>2013 Target</u>
Cases Reviewed	258	326				
Autopsies Performed	129	159			150	
Cremation Fees Collected	\$35,350	\$35,900			\$32,000	
Prison Reimbursement Dollars	\$23,830	\$16,416	\$12,846		\$17,000	
Report Fees / SUID Reimbursement Dollars	\$3,360	\$6,600				
ME	1	1	1		1	
Forensic Pathologists	3	3	3		3	
Dieners (pathology assistants)	3	3	3		4	
Field Investigators	8	8	8		8	
Administrative Assistant	1	1	1		1	
Average Cost Per Case for Forensic Pathologist	\$800	\$800	\$800		\$800	
Average Cost Per Case for Diener	\$95	\$95	\$95		\$95	
Average Cost Per Toxicology	\$165	\$180	\$180		\$180	
Average Morgue Cost Per Autopsy	\$50	\$50	\$50		\$50	
Average Cost For Field Investigator Per Day	\$100	\$100	\$100		\$100	
Average Time Autopsy Completed After Body Delivery to Morgue	24 Hours	24 Hours	24 Hours		24 Hours	
Average Time Until Completion of Final Autopsy Report	1-2 Months	1-2 Months	1-2 Months		1-2 Months	