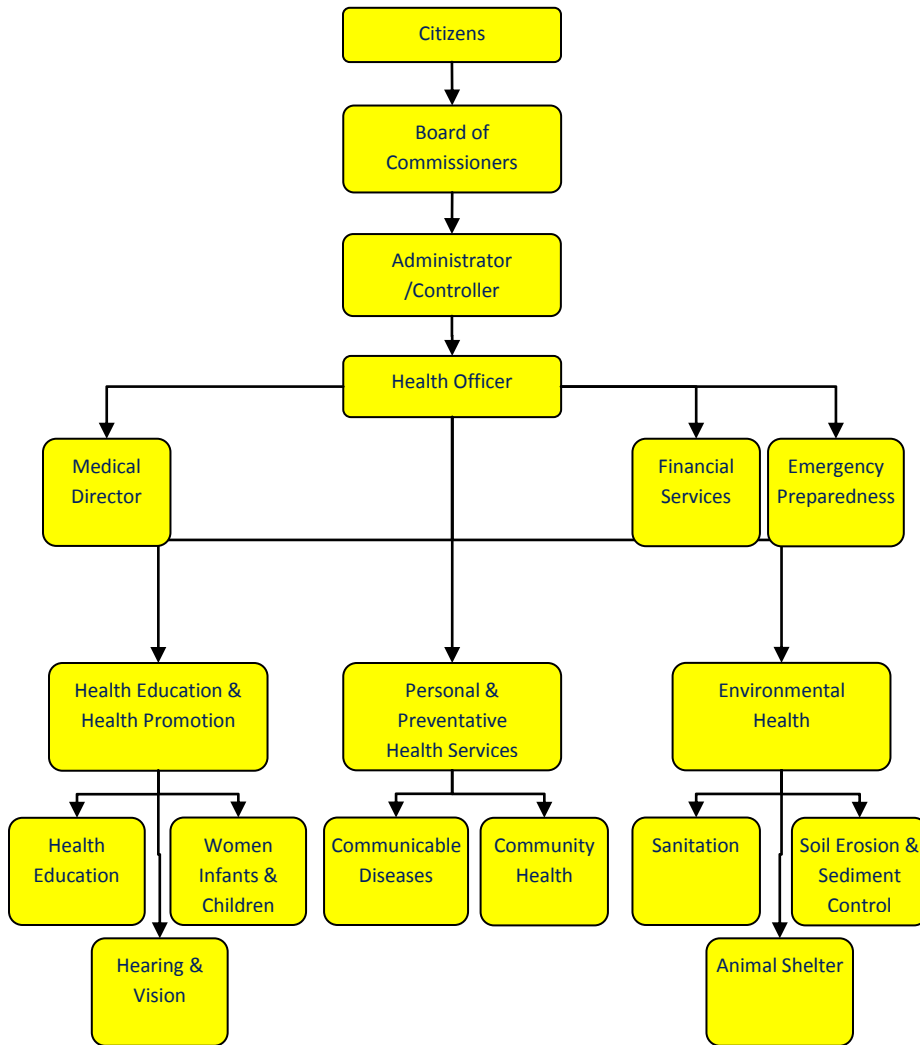


# Health Education



## Activities

The Health Education Division provides a variety of preventive services/programs to enable individuals, groups, organizations and communities to play active roles in achieving, protecting and sustaining healthy lifestyles and to improve the health status of Jackson County.

## Mission Statement

The Health Education Division provides a variety of preventive services/programs to enable individuals, groups, organizations and communities to play active roles in achieving, protecting and sustaining healthy lifestyles and to improve the health status of Jackson County.



### Strategic Plan Impact

✓ **Healthy Community**

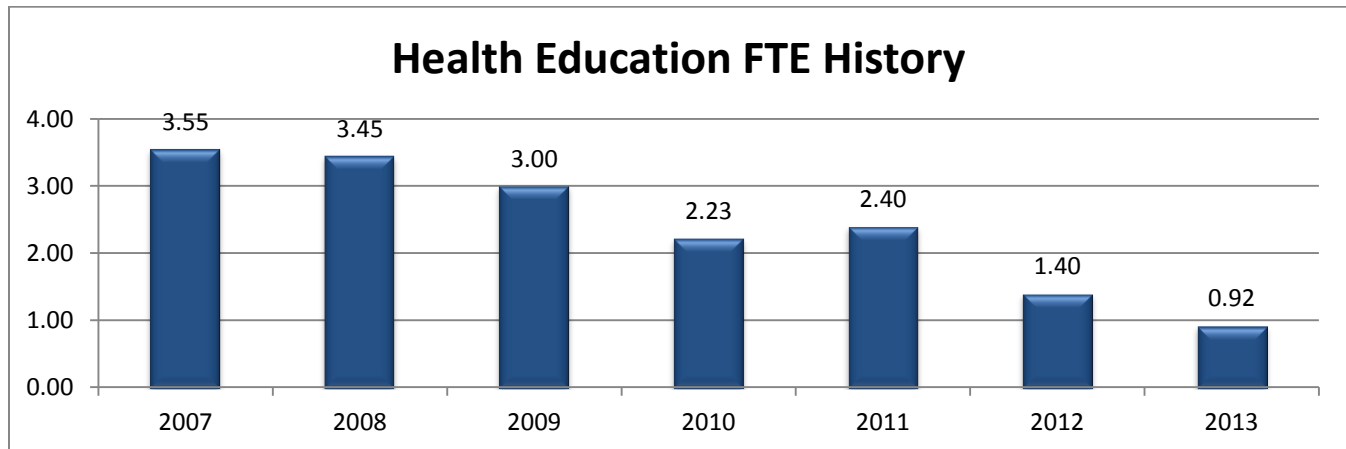
Promote JCHD services and healthy lifestyle choices to decrease chronic and communicable disease and negative health indicators (i.e., teen pregnancy and infant mortality).

### Accomplishments

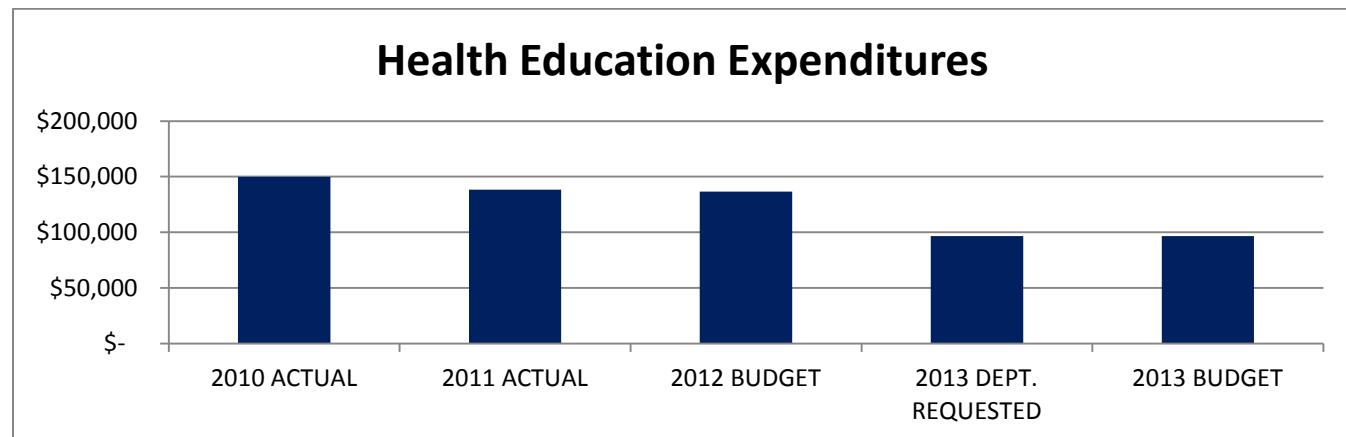
- ✓ Member of the County Strategic Implementation Team for the Healthy Community Strategy.
- ✓ Member of the Health Improvement Organization (HIO) Coordinating Council, the HIO Media Group, and the HIO Evaluation/Assessment Committee
- ✓ Applied/received grant/contract funding for the Jackson County Abstinence Partnership, Teen Pregnancy Prevention, Senior Health Promotion, Complete Streets, Lead Hazard Remediation, Michigan Purchaser's Health Alliance (JBL4H), and chronic disease initiatives.
- ✓ Created a part time Community Health Promotion Coordinator position to achieve specific HIO Community Action Plan (CAP) objectives.
- ✓ Collaborated with the development and release of the CAP, the myhio.org website and "Step by Step" social marketing campaign
- ✓ Developed and implemented the 2007/2008 and 2011 Community Health Assessment (CHA)
- ✓ Coordination of JCHD Marketing Team and implementation of the annual Marketing Plan
- ✓ Develop JCHD Annual Report and monthly Public Health Update
- ✓ JCHD Website coordination
- ✓ Certification of the Senior Health Promotion Specialist and two health educators in the Diabetes Personal Actions Toward Health evidence-based program.
- ✓ Participants of the physical activity programs state that they have reduced their weight, adopted healthier nutrition habits, lowered their medication intake, managed and/or lowered risk to Diabetes, held off from surgery, improved their cardio-respiratory endurance, and showed increased self motivation and utilization of the "buddy system" in keeping physically active.
- ✓ Almost doubled the Region II AAA requirement for fitness class participation from 142 to 260 in 2009.
- ✓ Increase physical activity class offerings by five, to include Zumba, Drums Alive, Strengthening , the Arthritis Foundation Exercise Program, and Social Ballroom Dancing,
- ✓ Through funding from the National Business Coalition on Health (NBCH) developed a tool kit for small businesses in Jackson County which will provide a road map of strategies and resources to assess and improve the health of their workforce in regard to physical activity, nutrition, tobacco use, and emotional wellness.
- ✓ As a part of the NBCH grant, held a community workshop targeted at small business leaders titles: Environment and Health Behavior.

## Budget Adjustments

The 2012 budget includes one less full-time-equivalent employee than the 2011 budget.



Expenditure History					
	2010 <u>ACTUAL</u>	2011 <u>ACTUAL</u>	2012 <u>BUDGET</u>	2013 DEPT <u>REQUESTED</u>	2013 <u>BUDGET</u>
PERSONNEL SERVICES	134,881	117,010	114,735	86,826	86,826
SUPPLIES & MATERIALS	3,012	8,884	6,020	6,020	6,020
CONTRACT SERVICES	10,000	8,094	12,000	-	-
OTHER EXPENSES	1,830	4,406	3,840	3,840	3,840
<b>TOTAL PROGRAM COST</b>	<b>\$149,723</b>	<b>\$138,394</b>	<b>\$136,595</b>	<b>\$96,686</b>	<b>\$96,686</b>

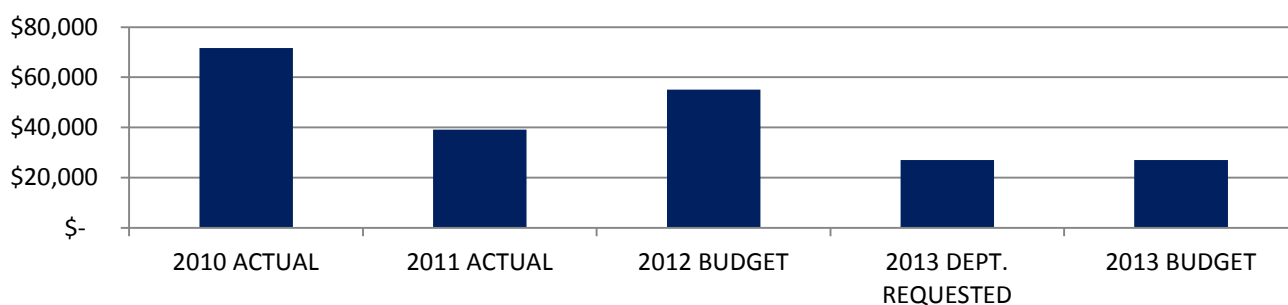


# Health Department

## Revenue History

	2010 <u>ACTUAL</u>	2011 <u>ACTUAL</u>	2012 <u>BUDGET</u>	2013 DEPT <u>REQUESTED</u>	2013 <u>BUDGET</u>
CHARGES/FEES	27,473	27,635	28,122	-	-
INTERGOVERNMENTAL	42,581	11,453	27,000	27,000	27,000
OTHER	1,655	-	-	-	-
<b>TOTAL PROGRAM COST</b>	\$71,709	\$39,088	\$55,122	\$27,000	\$27,000

## Health Education Revenues



## Strategic Outcomes

<u>Indicator</u>	2008 <u>Actual</u>	2009 <u>Actual</u>	2010 <u>Actual</u>	2011 <u>Actual</u>	2012 <u>Target</u>	2013 <u>Target</u>
<b>By participating in JCHD services/programs, participants may better manage their personal health and ultimately reduce chronic and communicable disease as well as negative health indicators.</b>						
Death Rate /Diseases of the Heart	238.5	255.9	N/A		235.0	
Death Rate/Diabetes Related	29.3	26.9	N/A		27.0	
Death Rate/Cerebrovascular Diseases	49.9	47.6	N/A		48.0	
Death Rate/Cancer	224.1	223.4	N/A		222.0	
Death Rate/Chronic Lower Respiratory Disease	64.9	68.8	N/A		63.0	
Death Rate/Influenza and Pneumonia	20.6	17.5	N/A		18.0	
Death Rate/Intentional Self Harm	14.4	18.1	N/A		13.0	
Percent of CHA participants who are overweight	37%	N/A	N/A		N/A	
Percent of CHA participants who are obese	33%	N/A	N/A		N/A	

Other Key Indicators

Indicator	2008 Actual	2009 Actual	2010 Actual	2011 Actual	2012 Target	2013 Target
Physical Activity classes offered (Senior Health Promotion)	575	456	446		645	
Participants in Senior Health Promotion Programs	7,150	5,715	5,973		7,500	
Website/Recent News Updates	12	12	12		12	
Public Health Updates Developed	12	12	6		6	



This page intentionally left blank.