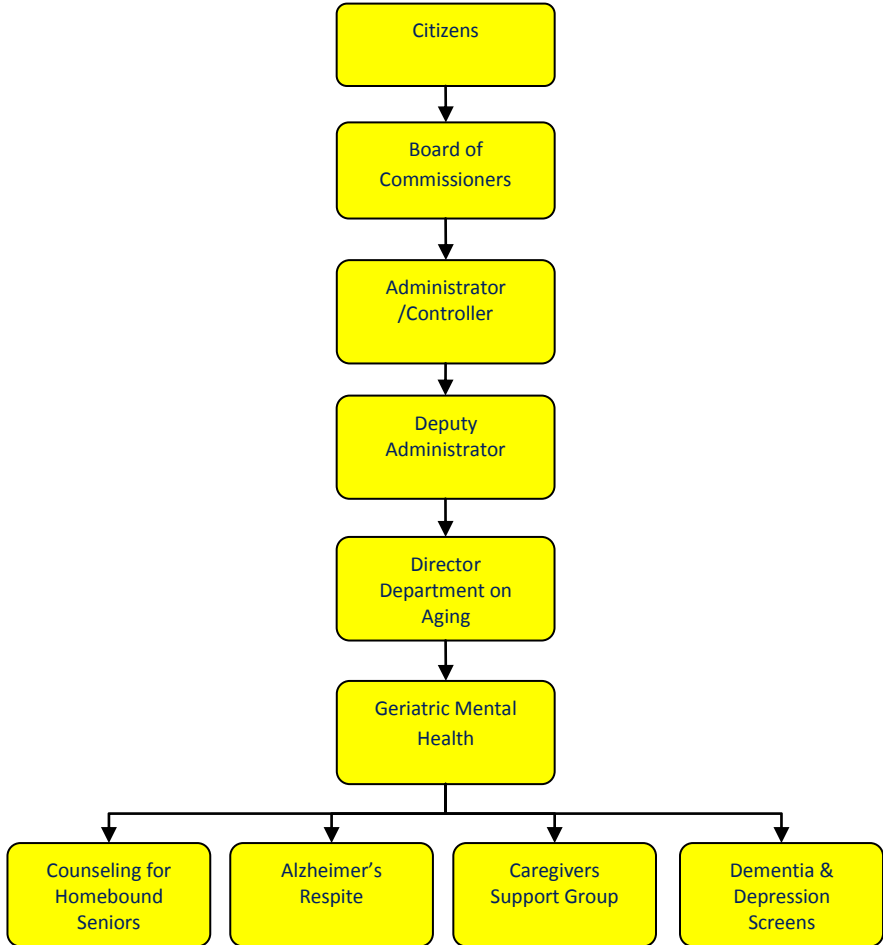


# Geriatric Mental Health



## Activities

Geriatric Mental Health Services offers support services for older adults and their caregivers. Services include social work counseling, depression and memory loss screenings, support groups, outreach and education for community groups, as well as Alzheimer's Respite Care.

## Mission Statement

To help Jackson County seniors to live more full, active, and independent lives.



## Strategic Plan Impact

✓ **Safe Community**

The Gatekeeper Program conducts an in-home assessment with seniors referred to the Department on Aging, and connects seniors with appropriate resources.

✓ **Healthy Community**

Geriatric Mental Health holistically addresses the needs of seniors to improve physical and psychological functioning. Support is provided for families dealing with Alzheimer's, including respite and counseling for caregivers.

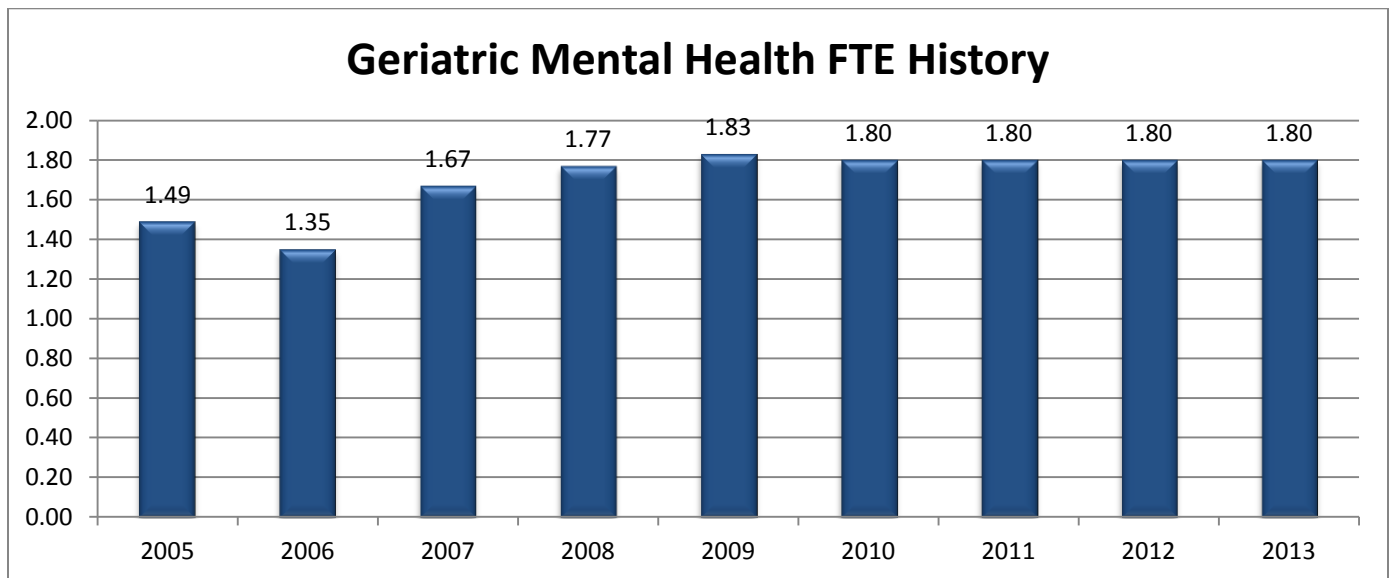
Outreach is done to raise awareness of mental health concerns, to educate seniors that depression and memory loss are not a "normal" part of aging.

## Accomplishments

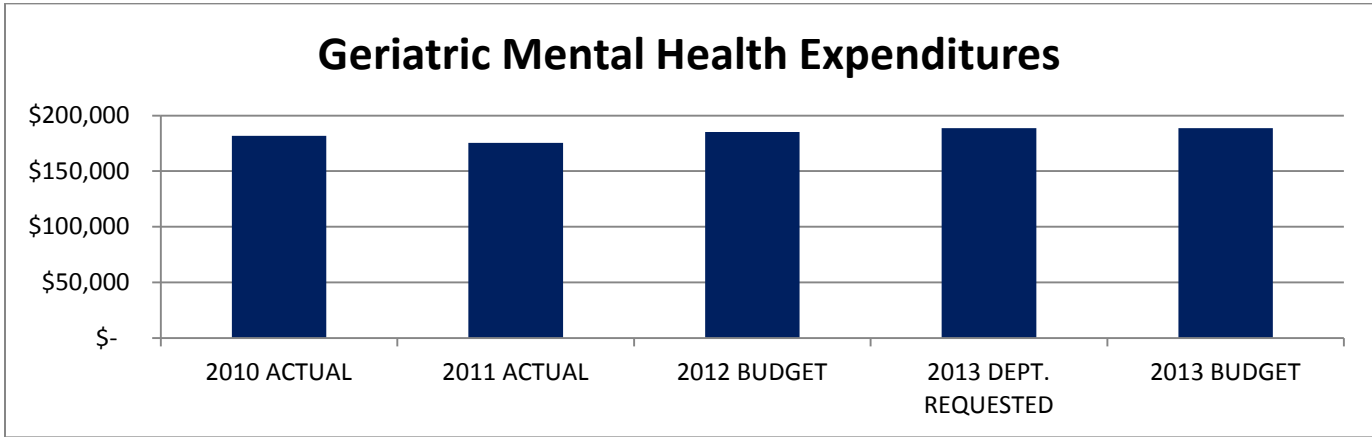
- ✓ In 2011 the Department began receiving Medicare and Medicaid reimbursement for counseling visits to homebound seniors.

## Budget Adjustments

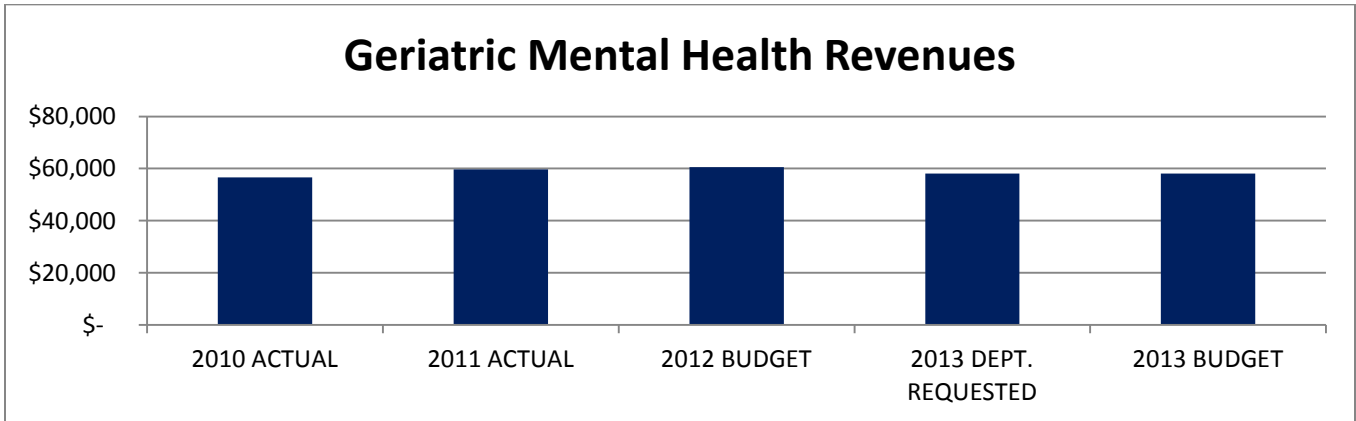
There are no significant adjustments to this program.



Expenditure History					
	2010 ACTUAL	2011 ACTUAL	2012 BUDGET	2013 DEPT REQUESTED	2013 BUDGET
PERSONNEL SERVICES	116,167	117,052	122,392	126,202	126,202
SUPPLIES 7 MATERIALS	600	648	850	658	658
CONTRACT SERVICES	650	656	768	700	700
OTHER EXPENSES	64,276	57,076	61,236	61,196	61,196
<b>TOTAL PROGRAM COST</b>	\$181,693	\$175,432	\$185,246	\$188,756	\$188,756



Revenue History					
	2010 ACTUAL	2011 ACTUAL	2012 BUDGET	2012 DEPT REQUESTED	2012 BUDGET
CHARGES/FEES	16,073	16,161	16,066	16,066	16,066
INTERGOVERNMENTAL	720	720	-	-	-
OTHER	39,813	42,845	44,535	42,075	42,075
<b>TOTAL PROGRAM COST</b>	\$56,606	\$59,726	\$60,601	\$58,141	\$58,141



## Strategic Outcomes

<u>Indicator</u>	<u>2008 Actual</u>	<u>2009 Actual</u>	<u>2010 Actual</u>	<u>2011 Actual</u>	<u>2012 Target</u>	<u>2013 Target</u>
Number of seniors better able to cope with their life circumstances as a result of counseling.	-	-	N/A	91%	85%	85%
Percentage of caregivers better able to cope with caregiving as a result of Alzheimer's Respite.			N/A	90%	85%	85%

## Other Key Indicators

<u>Indicator</u>	<u>2008 Actual</u>	<u>2009 Actual</u>	<u>2010 Actual</u>	<u>2011 Actual</u>	<u>2012 Target</u>	<u>2013 Target</u>
Clients screened for depression	64	67	2010 Actual	2011 Actual	2012 Target	2013 Target
Clients screened for dementia	31	32	56	67	60	60
Clients seen for Clinical Assessment and Referral services	43	60	16	11	20	20
Clients seen for supportive counseling	79	64	64	88	60	60
Counseling units	857.5	873.5	74	71	70	70
Screening time (in units)	134.25	127	911.75	793	870	870
Clinical Assessment and Referral time (in units)	86	131.25	88.25	106.25	100	100
Percent of counseling referrals converted to counseling clients within 7 business days.	N/A	N/A	162.25	179	140	140
Percent of counseling client symptoms lessened within brief, supportive therapy model parameters.	N/A	N/A	N/A	100%	80%	80%
Counseling units per client	12.31	10.85	N/A	91%	80%	80%