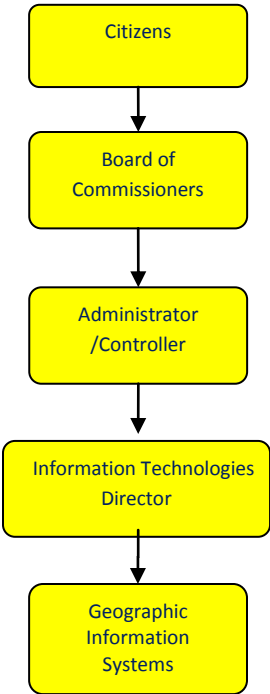


Geographic Information System



Activities

Promote, educate, & integrate the prevalent usage of GIS to allow increased productivity through accurate & informed decision making.

Provide the general public, private sector & associated governmental agencies access to enhanced GIS services & products that will assist them in meeting their business needs.

Efficiently create & maintain an enterprise based GIS which accurately & comprehensively represents all relevant County geographic data & information through workflow driven development of GIS data & applications.

Mission Statement

Create & maintain an environment for open communication, coordination & collaboration of the GIS efforts in Jackson County.



Strategic Plan Impact

✓ **Safe Community**

GIS is responsible for the creation and on-going maintenance for the Central Dispatch 911 system maps and address information. GIS provides support to local law enforcement with the location of sex offenders in relation to local schools.

✓ **Economic Development**

GIS supports economic development efforts to attract and retain business in the community through mapping. Partnerships between the GIS staff and the local Jackson Realtor's Association, the Enterprise Group, and the Land Bank facilitate the economic development process.

✓ **Healthy Community**

GIS provides public health mapping and spatial analysis. They assist with infectious disease surveillance, outbreak investigation, and planning and response activities.

✓ **Recreational & Cultural Opportunities**

GIS uses mapping to inform the public about recreational areas and activities within Jackson County.

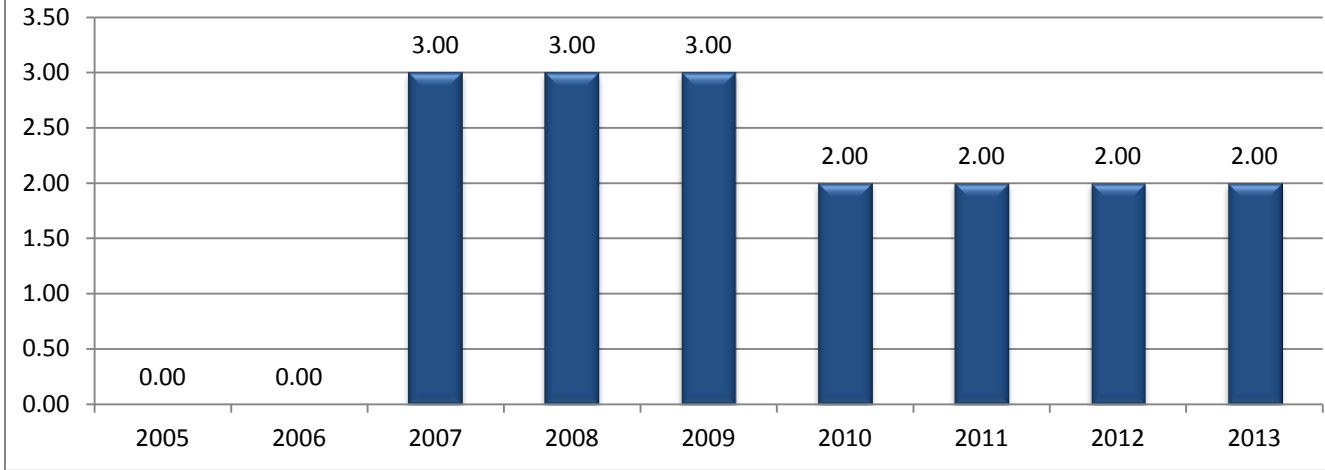
Accomplishments

- ✓ Kept the parcel file updated as changes are received.
- ✓ Completed and printed subdivision maps.
- ✓ Created PDF Documents of all 1/4 section and subdivision maps.
- ✓ Continued to update and improve Central Dispatch 911 with mapping/addressing.
- ✓ 2011 aerial flight management and QC.
- ✓ LIDAR Imagery analyze and process.
- ✓ Commissioner Redistricting / Voting Precincts.
- ✓ Worked with Road Commission to create traffic volumes layer to add to the web site.

Budget Adjustments

One FTE, a GIS Specialist, was eliminated for the 2011 Fiscal Year.

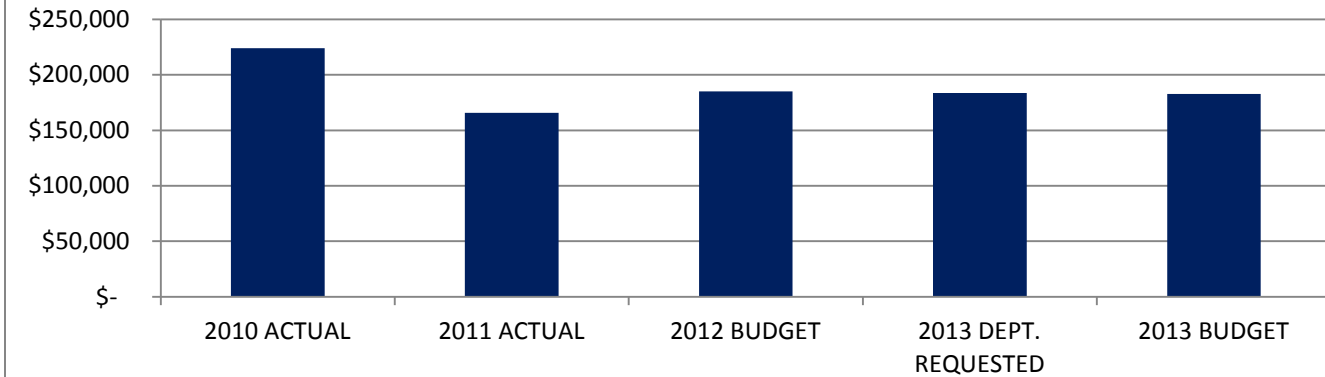
Geographic Information Systems (GIS) FTE History



Expenditure History

	2010 <u>ACTUAL</u>	2011 <u>ACTUAL</u>	2012 <u>BUDGET</u>	2013 DEPT <u>REQUESTED</u>	2013 <u>BUDGET</u>
PERSONNEL SERVICES	205,187	146,365	163,666	161,332	161,332
SUPPLIES & MATERIALS	806	2,867	2,050	2,050	2,050
CONTRACT SERVICES	13,999	12,826	14,000	14,000	14,000
OTHER EXPENSES	3,834	3,806	5,325	6,225	5,300
TOTAL PROGRAM COST	\$223,826	\$165,864	\$185,041	\$183,607	\$182,682

GIS Expenditures Expenditures

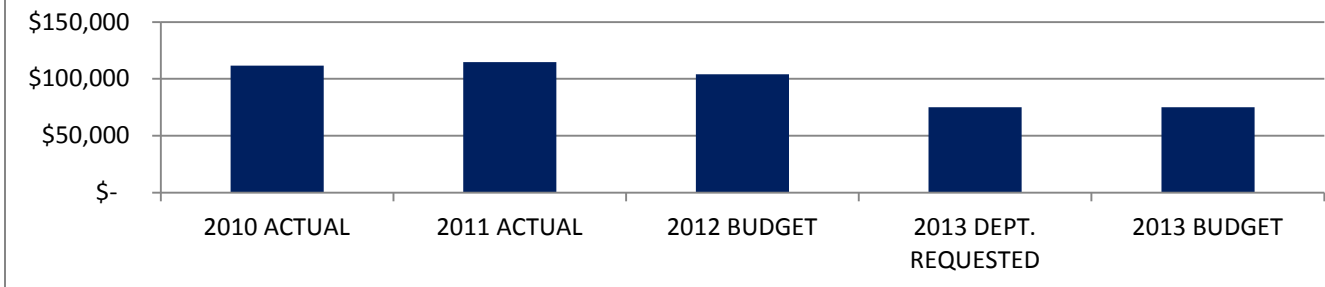


Information Technology - GIS

Revenue History

	2010 <u>ACTUAL</u>	2011 <u>ACTUAL</u>	2012 <u>BUDGET</u>	2013 DEPT <u>REQUESTED</u>	2013 <u>BUDGET</u>
CHARGES/FEES	111,596	114,645	104,000	75,000	75,000
TOTAL PROGRAM COST	\$111,596	\$114,645	\$104,000	\$75,000	\$75,000

GIS Revenues



Strategic Outcomes

<u>Indicator</u>	2008 <u>Actual</u>	2009 <u>Actual</u>	2010 <u>Actual</u>	2011 <u>Actual</u>	2012 <u>Target</u>	2013 <u>Target</u>
Update all zoning and display on GIS web site	N/A	N/A	N/A	3	19	N/A

Other Key Indicators

<u>Indicator</u>	2008 <u>Actual</u>	2009 <u>Actual</u>	2010 <u>Actual</u>	2011 <u>Actual</u>	2012 <u>Target</u>	2013 <u>Target</u>
Parcel splits/combinations	N/A	672	599	665	600	700
QC parcel map to database	N/A	78,647	76,908	78,359	78,000	78,000
Address point files created and maintained	55,265	50,038	68,236	71,480	72,000	72,000
Edit and update parcel and road centerline file	5,034	5,922	5,889	303	4,000	1,000
Reposition parcel file to remonumented section corners	N/A	N/A	N/A	N/A	80,000	N/A