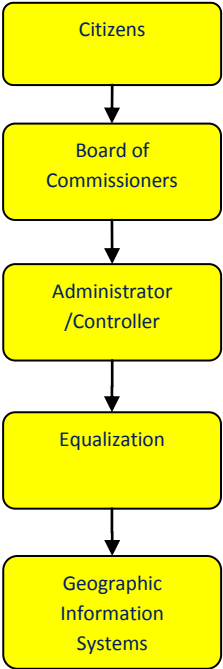


Equalization



Activities

Ensure that all assessors within the county are reflecting, properly, the taxable properties and values in the respective assessing units.

Survey assessments.

Assist county Board of Commissioners in equalizing assessments.

Provide assistance to assessing units.

Mission Statement

Create & maintain an environment for open communication, coordination & collaboration of the GIS efforts in Jackson County. Promote, educate, & integrate the prevalent usage of GIS to allow increased productivity through accurate & informed decision making. Provide the general public, private sector & associated governmental agencies access to enhanced GIS services & products that will assist them in meeting their business needs. To efficiently create & maintain an enterprise based GIS which accurately & comprehensively represents all relevant County geographic data & information through workflow-driven development of GIS data & applications.



Strategic Plan Impact

✓ **Safe Community**

Equalization Department's assessment roll database is the resource for developing the addressing for Central dispatch (911). The Equalization Department is the part of Damage Assessment team in the event of a disaster.

✓ **Economic Development**

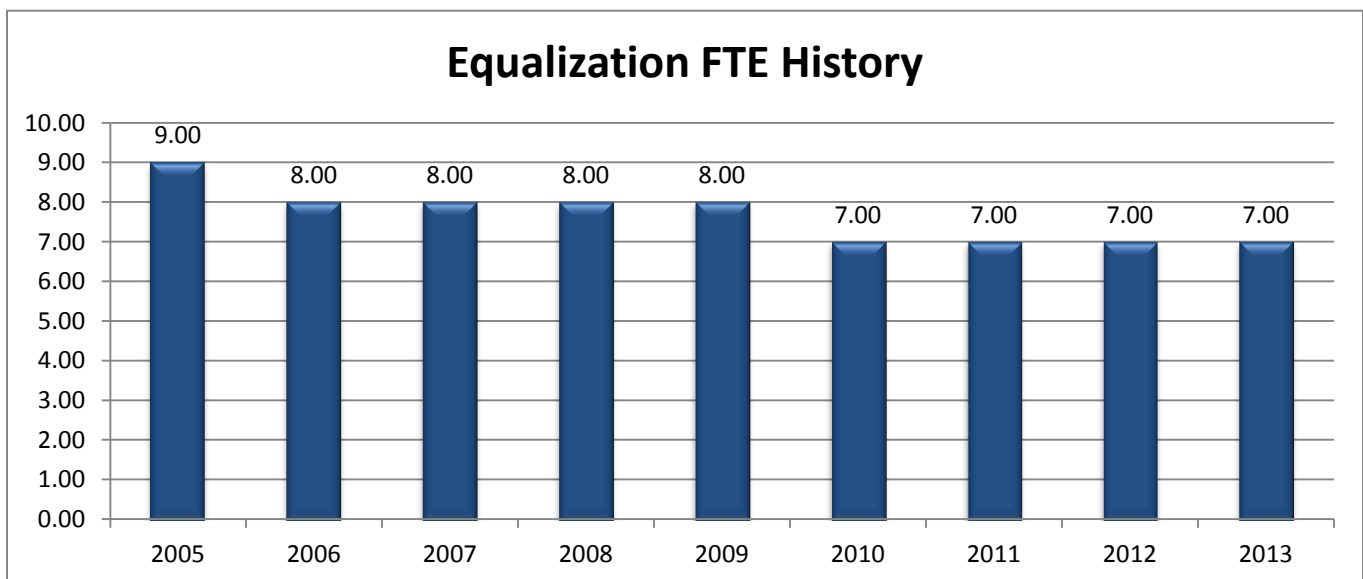
The Equalization Department assists economic development efforts by maintaining the assessment rolls database. The Equalization Department regularly provides information about large vacant land areas that are accessible by truck and rail for industrial development.

Accomplishments

- ✓ Successfully negotiated a contract with Parma Township to perform contract assessing.

Budget Adjustments

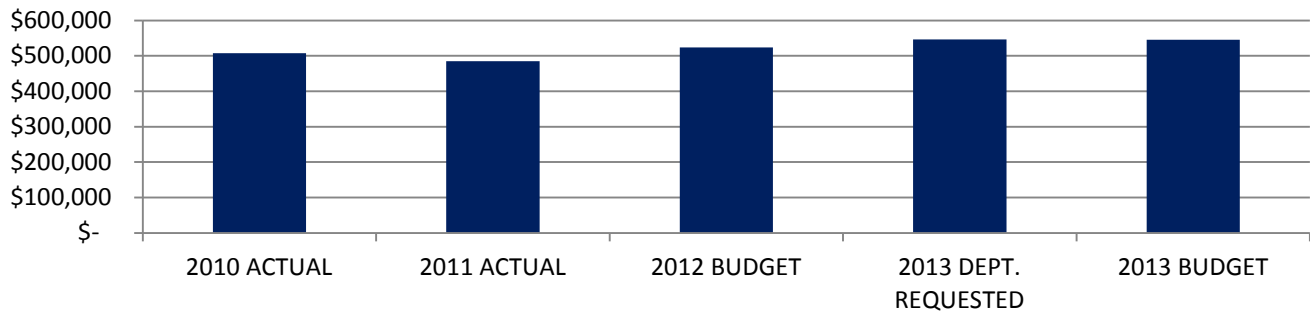
Minor adjustments have been made to software and postage costs. Modest increases in fee generated revenue are projected.



Expenditure History

	2010 <u>ACTUAL</u>	2011 <u>ACTUAL</u>	2012 <u>BUDGET</u>	2013 DEPT <u>REQUESTED</u>	2013 <u>BUDGET</u>
PERSONNEL SERVICES	459,848	435,729	475,484	495,213	495,213
SUPPLIES & MATERIALS	25,376	17,640	20,800	14,800	13,800
CONTRACT SERVICES	8,886	11,643	9,275	22,700	22,700
OTHER EXPENSES	13,257	19,971	17,750	13,600	13,600
TOTAL PROGRAM COST	\$507,367	\$484,983	\$523,309	\$546,313	\$545,313

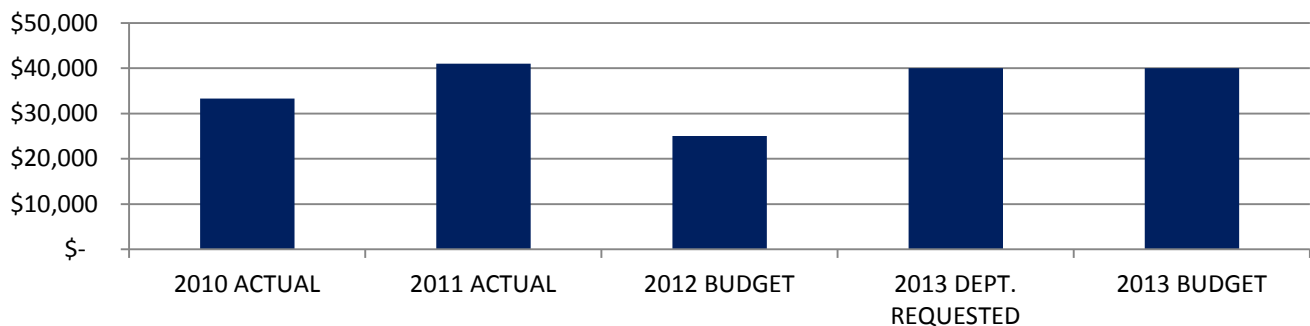
Equalization Expenditures



Revenue History

	2010 <u>ACTUAL</u>	2011 <u>ACTUAL</u>	2012 <u>BUDGET</u>	2013 DEPT <u>REQUESTED</u>	2013 <u>BUDGET</u>
CHARGES/FEES	33,332	36,006	25,000	20,000	20,000
TAXES	-	5,000	-	20,000	20,000
TOTAL PROGRAM COST	\$33,332	\$41,006	\$25,000	\$40,000	\$40,000

Equalization Revenues



Strategic Outcomes

<u>Indicator</u>	<u>2008 Actual</u>	<u>2009 Actual</u>	<u>2010 Actual</u>	<u>2011 Actual</u>	<u>2012 Target</u>	<u>2013 Target</u>
Parcel maintenance - number of land divisions	1,004	672	No Submission	No Submission	No Submission	No Submission
Process of deeds to update assessment database	7,701	8,815	No Submission	No Submission	No Submission	No Submission
Appraisals & real estate sales used to estimate market value	1,295	1,253	No Submission	No Submission	No Submission	No Submission

Other Key Indicators

<u>Indicator</u>	<u>2008 Actual</u>	<u>2009 Actual</u>	<u>2010 Actual</u>	<u>2011 Actual</u>	<u>2012 Target</u>	<u>2013 Target</u>
Parcel maintenance - splits of land	1,004	672	653	No Submission	700	No Submission
Process of information from recorded instruments (deeds)	7,701	8,815	12,110	No Submission	13000	No Submission
Sales of properties	831	635	900	No Submission	800	No Submission
Equalization staff	8	7	7	No Submission	7	No Submission
Splits processed by description clerks	502	533	653	No Submission	700	No Submission
Processed information for appraisals and assessors	1,100	1,011	1,214	No Submission	1,200	No Submission
Shortage of real estate sales - Effects to property tax revenue	207	158	N/A	No Submission	N/A	No Submission