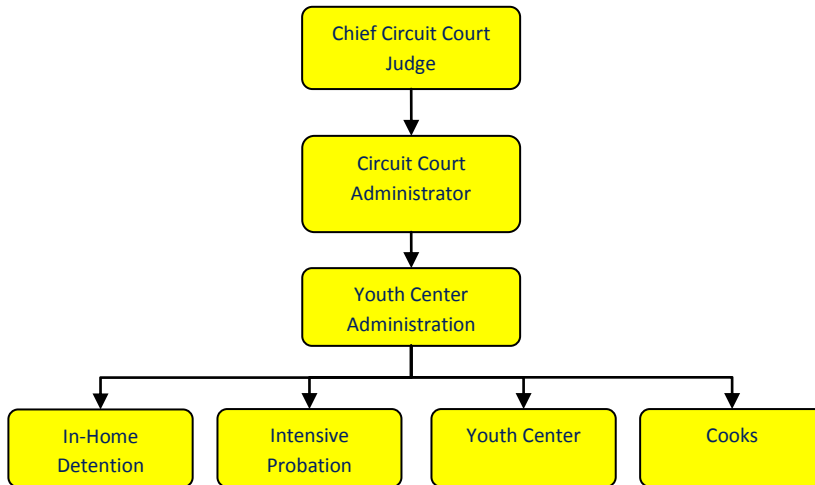


# Youth Center Cooks



## Activities

The Youth Center Cooks provide all the nutritional needs of the youth. They prepare 3 meals a day, 7 days a week. Meals served are in compliance with the Federal School Meals nutritional guidelines.



## Mission Statement

It is the Mission of the Youth Center is to demonstrate positive leadership as we provide services to youth and their families in an encouraging, culturally sensitive and caring way. It is the Vision of the Youth Center, in partnership with all associated agencies, to provide for the safety, well-being, dignity and positive development of every person we serve.

## Strategic Plan Impact

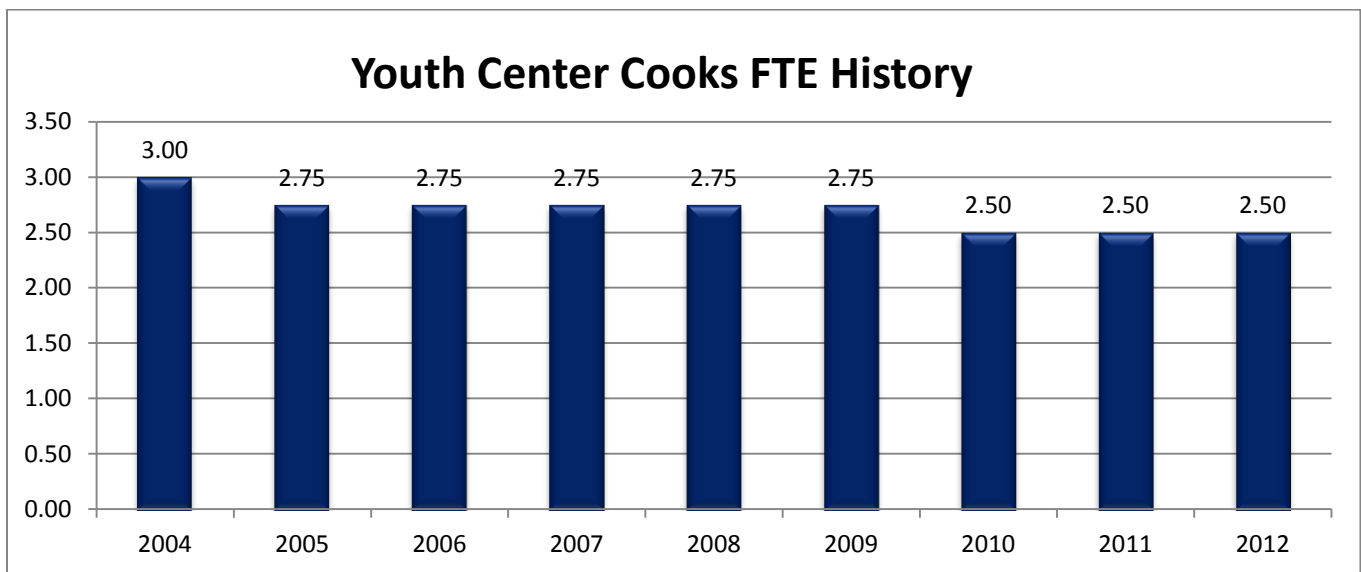
✓ **Healthy Community**

Often the residents do not get the proper nutritional meals while they are at home. The Youth Center provides 3 balanced and nutritious meals along with a daily snack. This contributes to the overall health of the residents we serve.

## Accomplishments

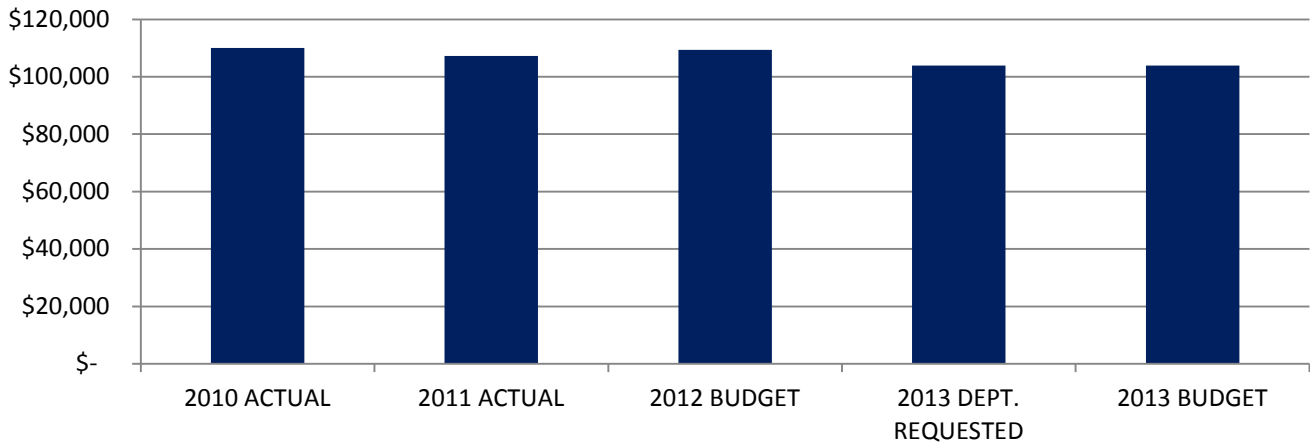
## Budget Adjustments

There are no significant budget adjustments to this program.



Expenditure History					
	2010 ACTUAL	2011 ACTUAL	2012 BUDGET	2013 DEPT REQUESTED	2013 BUDGET
PERSONNEL SERVICES	110,047	107,220	109,391	103,853	103,853
<b>TOTAL PROGRAM COST</b>	<b>\$110,047</b>	<b>\$107,220</b>	<b>\$109,391</b>	<b>\$103,853</b>	<b>\$103,853</b>

### Youth Center Cooks Expenditures



### Revenue History

	2010 <u>ACTUAL</u>	2011 <u>ACTUAL</u>	2012 <u>BUDGET</u>	2013 DEPT <u>REQUESTED</u>	2013 <u>BUDGET</u>
<b>TOTAL PROGRAM COST</b>	\$0	\$0	\$0	\$0	\$0

### Strategic Outcomes

<u>Indicator</u>	2008 <u>Actual</u>	2009 <u>Actual</u>	2010 <u>Actual</u>	2011 <u>Actual</u>	2012 <u>Target</u>	2013 <u>Target</u>
Percent of respondents who say they feel very or somewhat safe from violent crime	N/A	50%	N/D		52%	
Percent of respondents who say they feel very or somewhat safe in their neighborhood during the day.	N/A	92%	N/D		94%	
Percent of respondents who say they feel very or somewhat safe in their neighborhood after dark.	N/A	74%	N/D		76%	

## Other Key Indicators

<u>Indicator</u>	<u>2008 Actual</u>	<u>2009 Actual</u>	<u>2010 Actual</u>	<u>2011 Actual</u>	<u>2012 Target</u>	<u>2013 Target</u>
Number of Meals Served to residents	37,689	33,931	32,859		37,900	
Child Care Days	12,563	8,645	9,185		12,633	
Cooks (FTE's)	2.75	2.75	2.5		2.5	
Food	\$81,729	\$78,861	79,135		\$88,000	
Average Cost per Meal	\$2.02	\$2.08	2.10		\$2.05	