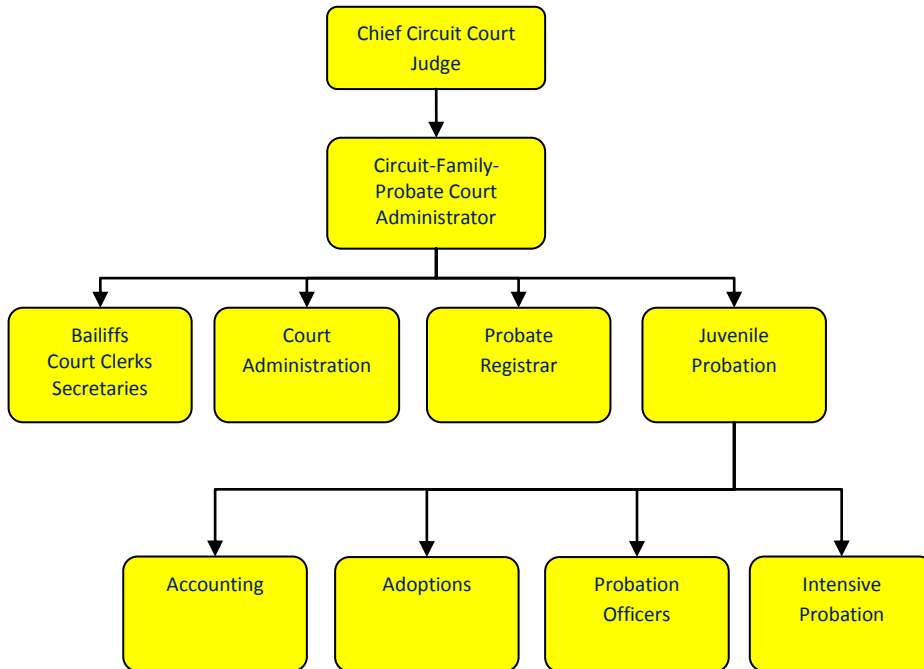


Circuit Court



Activities

Circuit-Family-Probate Court serves as trial court of general jurisdiction for Jackson County—felonies, major civil cases, domestic relations, appeals from lower jurisdiction/ agencies courts

Probate, Estate Division has exclusive legal and equitable jurisdiction in matters relating to settlement of estate of deceased persons, proceedings concerning trusts, guardianships, conservatorships, and proceedings to review and settle the account of a fiduciary

Family Court has jurisdiction in juvenile delinquency, neglect, abuse, adoption proceedings and juvenile traffic offenses

Circuit-Family Court is responsible for operation of other arms of the court: Friend of the Court, ADR, Jury Commission and the Law Library



Mission Statement

Jackson County Circuit-Family-Probate Court provides fair, accessible, effective, and responsive forums for the resolution of civil and criminal matters.

Strategic Plan Impact

✓ Safe Community

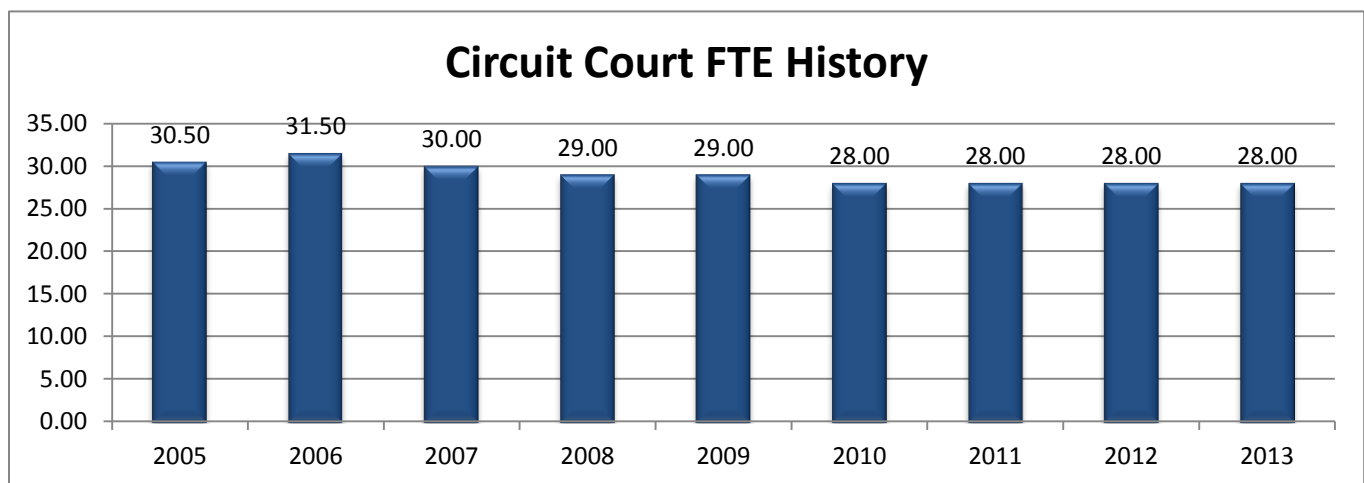
The Circuit Court is the trial court of general jurisdiction for Jackson County. It has jurisdiction over felonies, major civil cases, domestic relations, appeals from courts of lower jurisdiction and agencies. The Probate Court has exclusive legal jurisdiction in matters relating to settlement of estates related to deceased persons, proceedings concerning trusts, guardianships, conservatorships; and proceedings to review and settle the account of a fiduciary. The Family Court has jurisdiction in juvenile delinquency, neglect, abuse, adoptions, and juvenile traffic proceedings.

Accomplishments

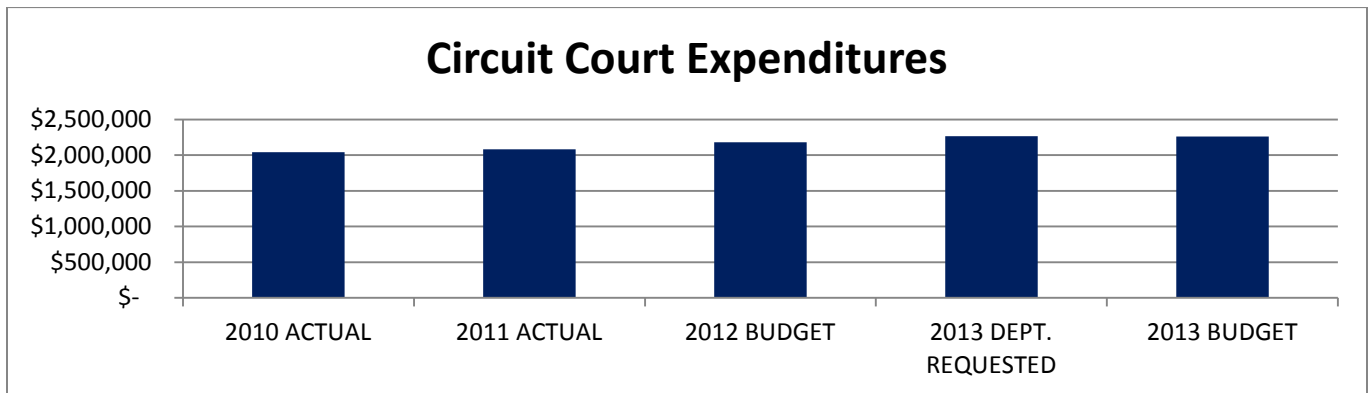
- ✓ The Alternatives to Act 150 State Placement Committee has continued working closely with the Family Court Judiciary and DHS to find less expensive placements for our troubled juvenile populations, these efforts have resulted in reducing that part of the Child Care Fund Budget.
- ✓ The Adult Recovery Court was awarded additional grant funding through Mid-South Substance Abuse Commission that has allowed the Recovery Court to provide treatment to more participants, helping to reduce local and state jail bed usage and medical costs.

Budget Adjustments

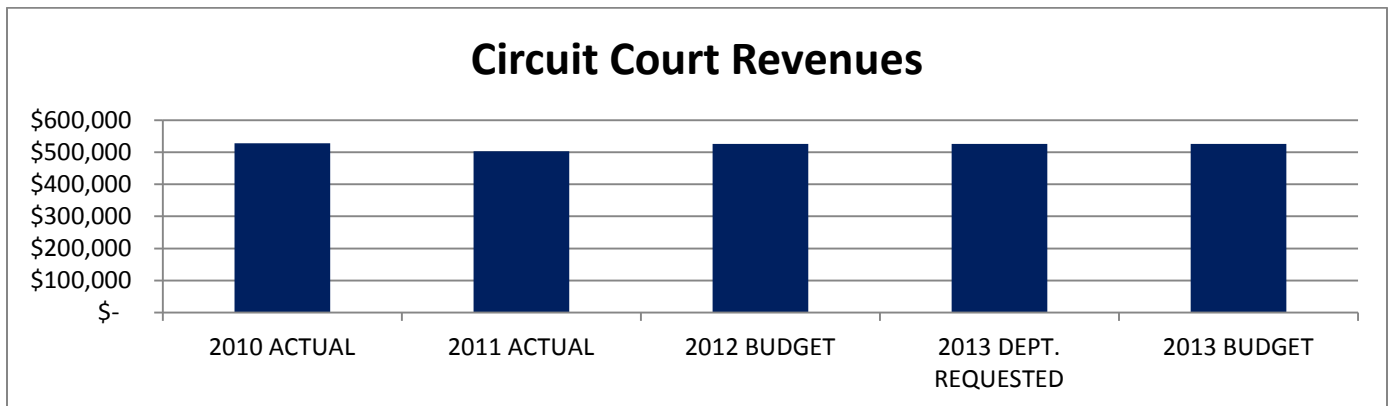
There are no significant budget adjustments in the Circuit Court.



Expenditure History					
	2010 <u>ACTUAL</u>	2011 <u>ACTUAL</u>	2012 <u>BUDGET</u>	2013 DEPT <u>REQUESTED</u>	2013 <u>BUDGET</u>
CONTRACT SERVICES	124,298	126,199	140,370	143,670	139,670
OTHER EXPENSES	40,750	45,656	53,230	53,730	53,230
PERSONNEL SERVICES	1,812,499	1,845,643	1,922,453	2,002,998	2,002,998
SUPPLIES & MATERIALS	62,799	62,569	63,800	64,800	64,800
TOTAL PROGRAM COST	\$2,040,346	\$2,080,067	\$2,179,853	\$2,265,198	\$2,260,698



Revenue History					
	2010 <u>ACTUAL</u>	2011 <u>ACTUAL</u>	2012 <u>BUDGET</u>	2013 DEPT <u>REQUESTED</u>	2013 <u>BUDGET</u>
CHARGES/FEES	\$86,680	\$82,525	\$102,439	\$102,439	\$102,439
INTERGOVERNMENTAL	\$411,751	\$392,295	\$402,204	\$402,204	\$402,204
OTHER	\$29,139	\$27,791	\$21,000	\$21,000	\$21,000
TOTAL PROGRAM REVENUE	\$527,570	\$502,611	\$525,643	\$525,643	\$525,643



Strategic Outcomes

<u>Indicator</u>	<u>2008 Actual</u>	<u>2009 Actual</u>	<u>2010 Actual</u>	<u>2011 Actual</u>	<u>2012 Target</u>	<u>2013 Target</u>
Percent of respondents who say they feel very or somewhat safe from violent crime	N/A	50%	ND	No Submission	N/D	No Submission
Percent of respondents who say they feel very or somewhat safe in their neighborhood during the day.	N/A	92%	ND	No Submission	N/D	No Submission
Percent of respondents who say they feel very or somewhat safe in their neighborhood after dark.	N/A	74%	ND	No Submission	N/D	No Submission

Other Key Indicators

<u>Indicator</u>	<u>2008 Actual</u>	<u>2009 Actual</u>	<u>2010 Actual</u>	<u>2011 Actual</u>	<u>2012 Target</u>	<u>2013 Target</u>
Appeals, Admin. Reviews, Writs Filed	70	106	113	No Submission	80	No Submission
Criminal Case Filings	1,145	1,269	1265	No Submission	1200	No Submission
Civil Case Filings	456	511	561	No Submission	500	No Submission
Family Case Filings	4,204	4,289	4100	No Submission	4200	No Submission
Probate Case Filings	1,296	1,275	1275	No Submission	1300	No Submission
Total Full Time Employees	29	29	27	No Submission	27	No Submission
Total Part-Time Employees	2	2	4	No Submission	4	No Submission