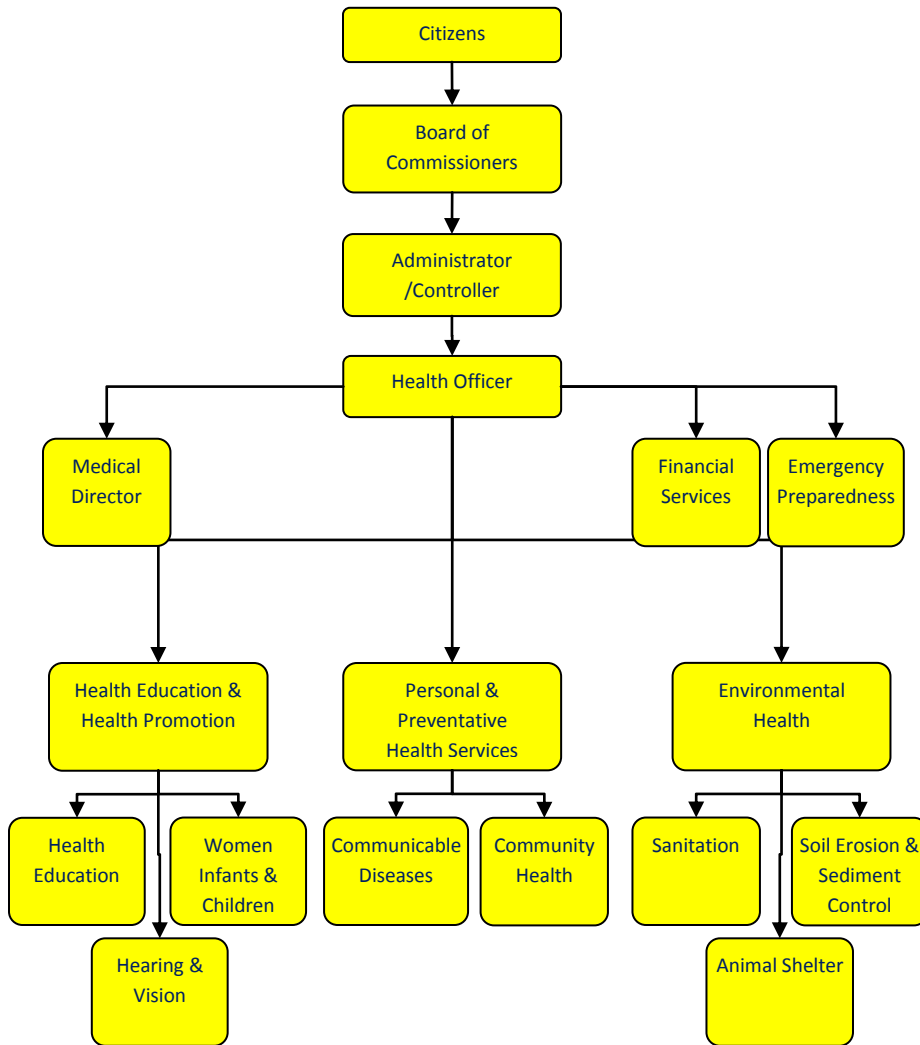


Children's Special Health Care



Activities

The Public Health Nurses in Children's Special Health Care Services work with families with children having certain disabilities or chronic illnesses. Families are assisted in acquiring financial assistance for medical care, as well as providing advocacy and support. Care Coordination is also provided as needed.

Mission Statement

The purpose of the CSHCS program is to provide insurance for children with disabilities or chronic illness.



Strategic Plan Impact

✓ **Healthy Community**

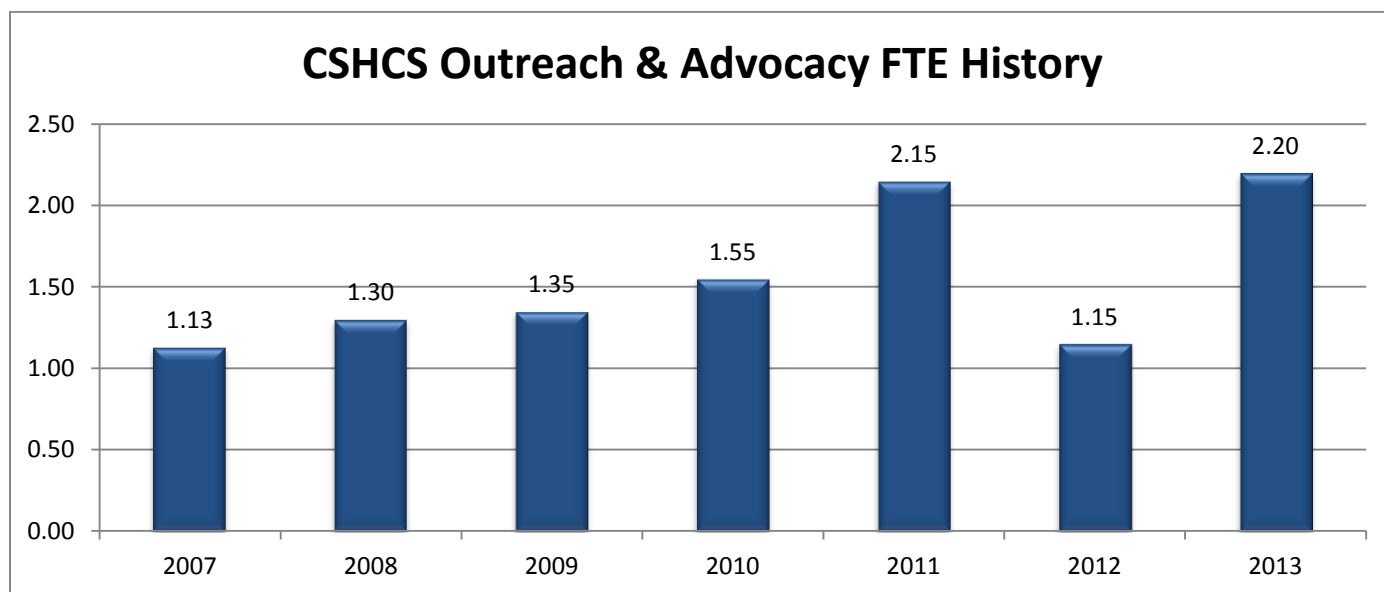
The purpose of the CSHCS Program is to provide insurance for children with disabilities or chronic illnesses. The program provides advocacy, referrals, support, and care coordination services for the families.

Accomplishments

- ✓ EZ Link, the electronic transfer of records between the LHD and the state, was piloted by the JCHD before it was released statewide. LHD started using ezlink for transfer of records between counties and to obtain reports from U of M Medical Center.
- ✓ 50% increase in the amount of care plans and care coordination in 2009.
- ✓ JCHD staff assisted more families with Medicaid/MiChild applications and CSHCS insurance premium payment benefit.
- ✓ JCHD staff participates on the CSHCS Local Advisory Council.
- ✓ JCHD hired and trained a part-time Public Health Nurse and increased clerical hours by 4 hours per week.
- ✓ LHD can now access the State's Children's Special Health Care data base.

Budget Adjustments

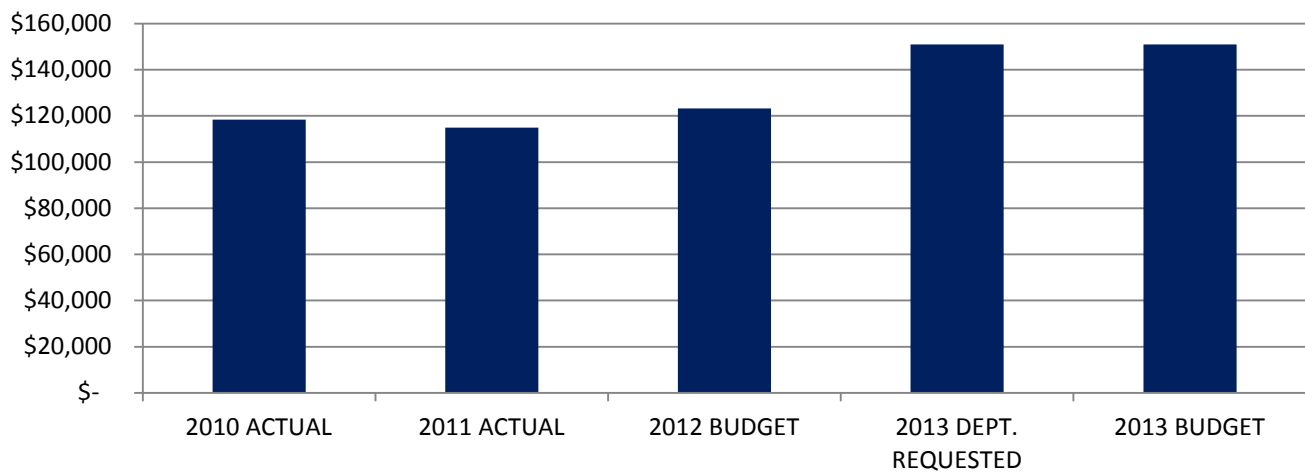
The 2012 budget includes one less full-time-equivalent employee.



Expenditure History

	2010 <u>ACTUAL</u>	2011 <u>ACTUAL</u>	2012 <u>BUDGET</u>	2013 DEPT <u>REQUESTED</u>	2013 <u>BUDGET</u>
PERSONNEL SERVICES	113,426	110,134	121,122	148,825	148,825
SUPPLIES & MATERIALS	3,627	3,414	1,250	1,250	1,250
CONTRACT SERVICES	20	-	-	-	-
OTHER EXPENSES	1,258	1,342	875	875	875
TOTAL PROGRAM COST	\$118,331	\$114,890	\$123,247	\$150,950	\$150,950

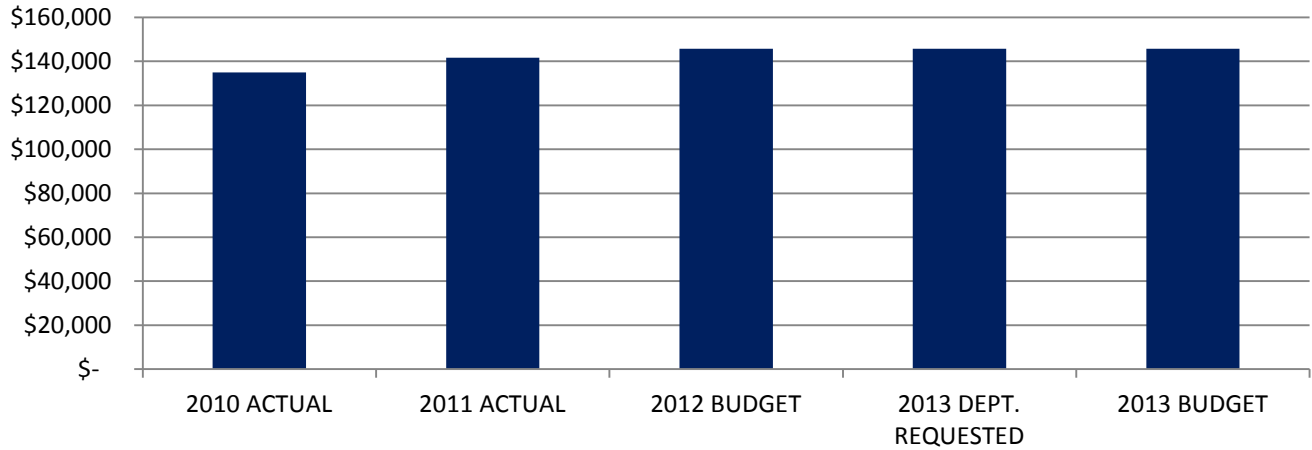
Child Special Health Care Services Expenditures



Revenue History

	2010 <u>ACTUAL</u>	2011 <u>ACTUAL</u>	2012 <u>BUDGET</u>	2013 DEPT <u>REQUESTED</u>	2013 <u>BUDGET</u>
OTHER	-	8,870	16,758	16,758	16,758
INTERGOVERNMENTAL	134,946	132,789	129,000	129,000	129,000
TOTAL PROGRAM COST	\$134,946	\$141,659	\$145,758	\$145,758	\$145,758

Child SP Health Care Services Revenues



Strategic Outcomes

Indicator	2008 Actual	2009 Actual	2010 Actual	2011 Actual	2012 Target	2013 Target

Other Key Indicators

Indicator	2008 Actual	2009 Actual	2010 Actual	2011 Actual	2012 Target	2013 Target
Number of individuals enrolled in CSHCS.	712	688	681		690	