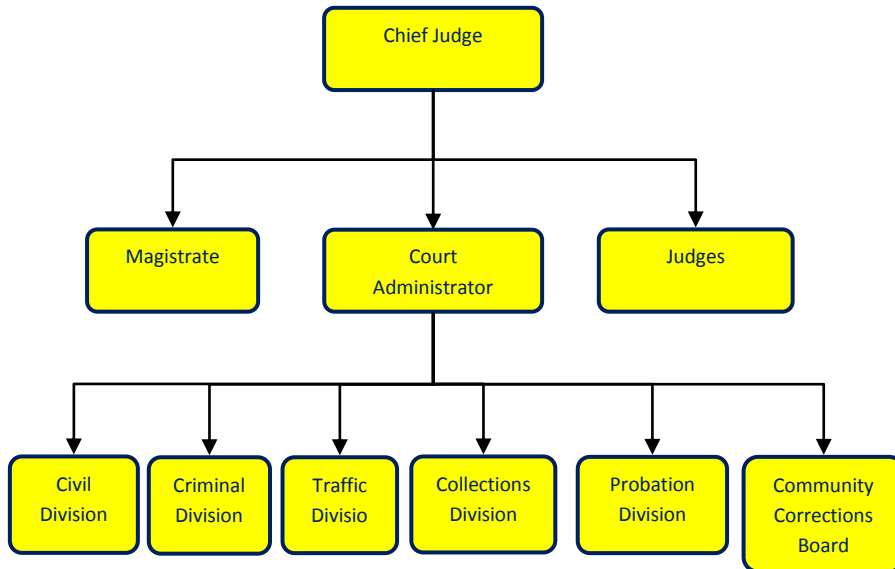


12th District Court



Activities

There are six divisions of 12th District Court: Civil, Criminal, Collections, Community Corrections, Probation and Traffic. The District Court processes civil lawsuits, performs weddings, and processes all statute and ordinance misdemeanors. The District Court is also responsible for processing felony matters up to the preliminary examination stage. We collect current and delinquent fines and costs owed to the court, and execute criminal bench warrants. Additionally, we conduct presentence investigations; supervise individuals on probation, and process traffic, marine, snow-mobile, conservation, animal control, and some parking violations. Lastly, we operate two specialty courts – Mental Health and Domestic Violence.



Mission Statement

The 12th Judicial District Court is dedicated to dispensing equal justice in all matters under the court's jurisdiction, providing the highest quality of professional services in a prompt and efficient manner, and recognizing and respecting the individual dignity of all people served by the court.

Strategic Plan Impact

- ✓ Safe Community

The 12th District Court plays an important role in providing Jackson County residents with a safe community. Through the adjudication process we help to create an environment where residents peacefully coexist and participate in all aspects of life. The District Court has two specialized courts for increased focus and attention on areas of concern, Domestic Violence and Mental Health. Both courts are fully functional and are proving beneficial for community safety. Our probation department has an Intensive Supervision Program that serves as a jail alternative program provides daily monitoring of drug and alcohol abuse for individuals on probation. Our Community Corrections program provides jail alternatives to free up jail bed space for more serious offenders.

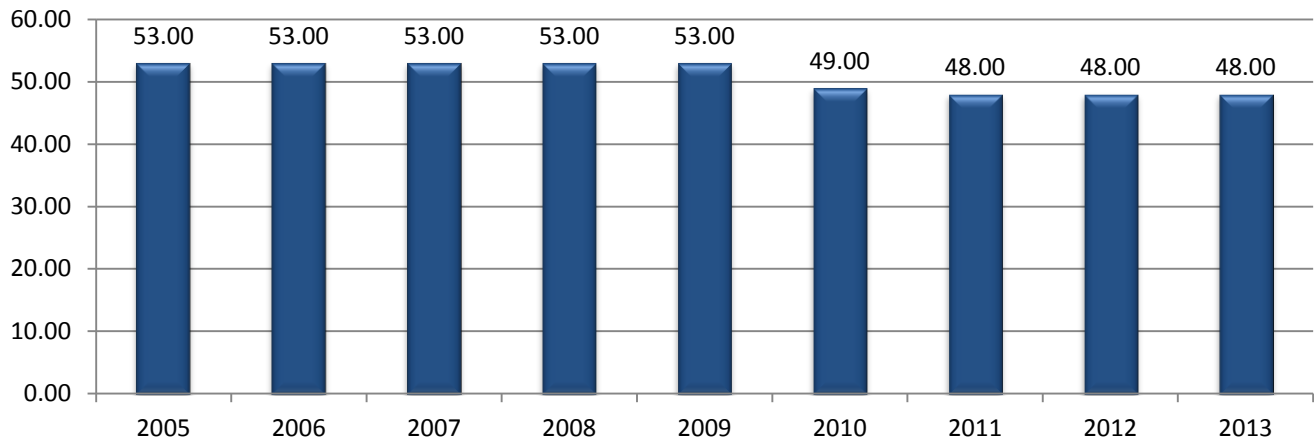
Accomplishments

- ✓ While cases totals are on a decline, District Court is attempting to provide quality services as well as specialized services. District Court currently operating a grant funded Mental Health Court to assist those in Jackson County with mental health issues that run into legal problems. We continue to provide Intensive Supervision for our more serious drug and alcohol offenders.
- ✓ In 2009, District Court took over the supervision of the Community Corrections program (State Grant Funded) providing jail alternatives for individuals convicted of both misdemeanors and felonies. This program has been a nice addition to the District Court that is 100% grant funded. Our collection department has been working diligently to collect outstanding receivables. In 2010 we collected a total of \$1,859,072.54. Our probation department, with the specialized courts, has conducted 1,742 pre-sentence investigations.

Budget Adjustments

There are no significant budget adjustments to the 12th District Court.

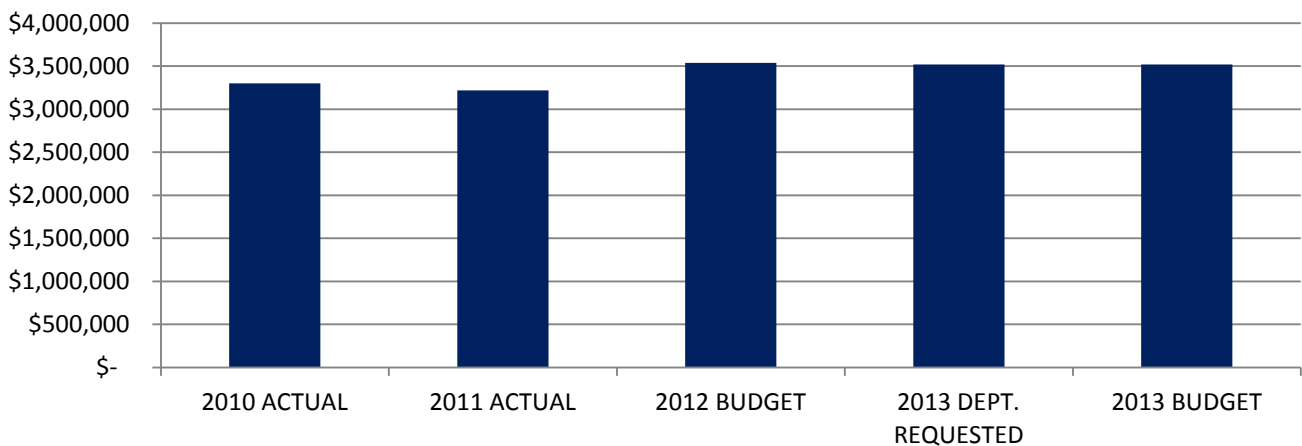
12th District Court FTE History



Expenditure History

	2010 <u>ACTUAL</u>	2011 <u>ACTUAL</u>	2012 <u>BUDGET</u>	2013 DEPT <u>REQUESTED</u>	2013 <u>BUDGET</u>
PERSONNEL SERVICES	2,882,457	2,849,014	3,070,725	3,082,403	3,082,403
SUPPLIES & MATERIALS	87,041	85,743	114,075	98,275	98,275
CONTRACT SERVICES	306,337	264,215	317,457	307,957	307,957
OTHER EXPENSES	23,486	19,119	36,100	29,500	29,500
TOTAL PROGRAM COST	\$3,299,321	\$3,218,091	\$3,538,357	\$3,518,135	\$3,518,135

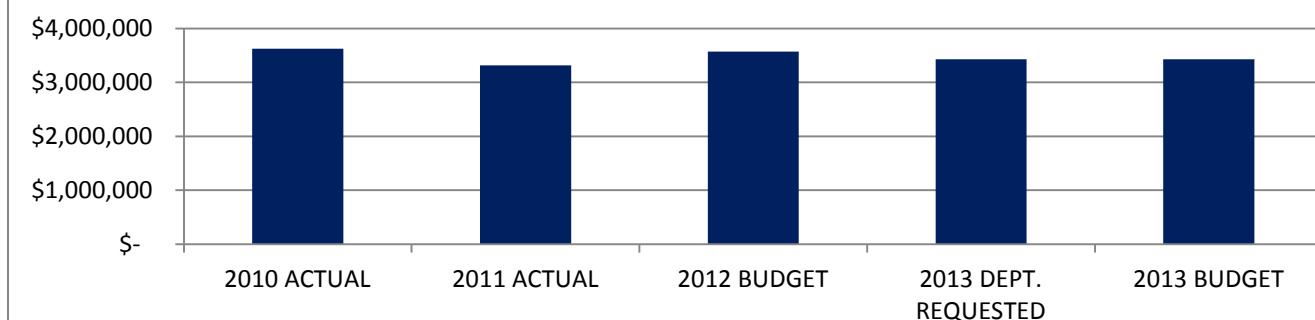
12th District Court Expenditures



Revenue History

	2010 <u>ACTUAL</u>	2011 <u>ACTUAL</u>	2012 <u>BUDGET</u>	2013 DEPT <u>REQUESTED</u>	2013 <u>BUDGET</u>
Charges/Fees	2,185,651	2,056,972	2,205,000	2,170,000	2,170,000
Fines	1,239,762	1,064,285	1,155,500	1,061,500	1,061,500
Intergovernmental	182,896	182,896	182,446	182,446	182,446
Other revenue	17,123	9,128	25,000	15,000	15,000
TOTAL PROGRAM REVENUE	\$3,625,432	\$3,313,281	\$3,567,946	\$3,428,946	\$3,428,946

12th District Court Revenues



Strategic Outcomes

<u>Indicator</u>	2008 <u>Actual</u>	2009 <u>Actual</u>	2010 <u>Actual</u>	2011 <u>Actual</u>	2012 <u>Target</u>	2013 <u>Target</u>
Presentence Investigations	1,834	1,748	1,748	1,785	1,800	1,800
Fees collected by Internal Collection Program	\$2,111,894	\$2,073,954	\$1,859,072	\$2,000,000	\$2,100,000	\$2,100,000
Total Number of Cases Processed	54,286	55,144	48,712	55,764*	45,000	45,000

* Four judges are budgeted for the District Court; however, one judge position was vacated for most of 2011.

Other Key Indicators

<u>Indicator</u>	2008 <u>Actual</u>	2009 <u>Actual</u>	2010 <u>Actual</u>	2011 <u>Actual</u>	2012 <u>Target</u>	2013 <u>Target</u>
Number of Probation Agents processing PSI's	7	6	6	6	6	6
Number of Collection Officers	4	4	3	3	3	3
Number of Judges Processing cases	4	4	4	4	4	4
Number of PSI's per agent	262	291	290	298	300	300
Amount collected per collection agent	527,973	518,489	619,690	666,666	700,000	700,000
Number of cases per Judge	13,571	13,786	12,178	18,588*	11,250	11,250

* Four judges are budgeted for the District Court; however, one judge position was vacated for most of 2011. The calculation reflects this circumstance.