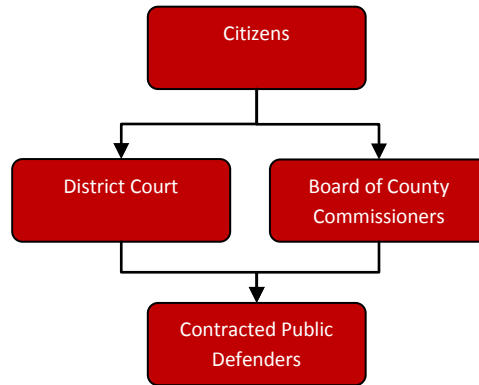


Public Defender



Mission Statement

Jackson County government, in cooperation with the community and local government units, strives through a planned process to deliver quality services that address public needs.

Public Defender

Activities

Pay for defense of individuals who declare themselves indigent and unable to pay for their defense in District Court or Circuit/Family/Probate Court.

Strategic Plan Impact

✓ **Safe Community**

The public defender program supports the safe community strategic priority by providing for the defense of persons without legal representation. This program is one of many services citizens have access to when needed.

Accomplishments

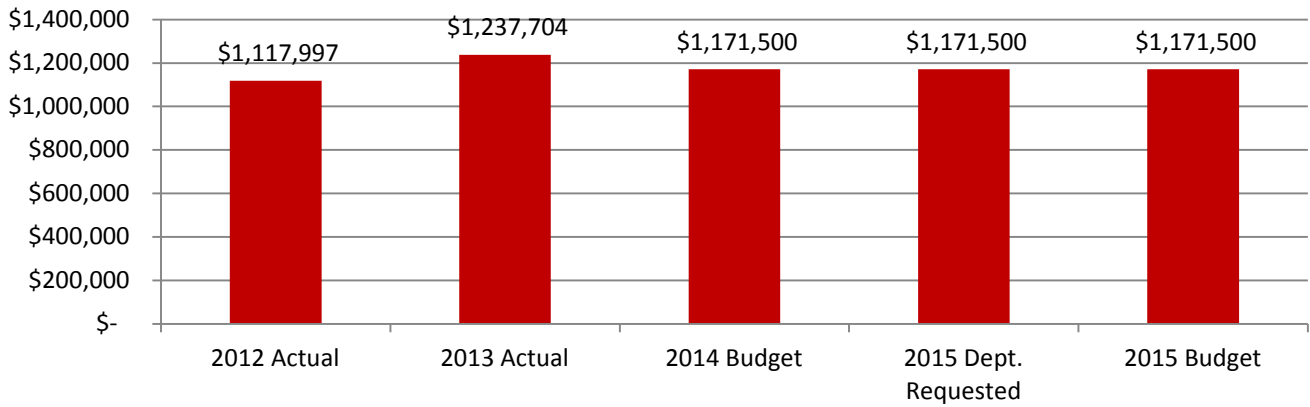
- ✓ The County awarded new contracts for misdemeanor defendant contracts in 2014.
- ✓ The State of Michigan approved changes to public defender requiring the Court and Board of County Commissioners to work collaboratively in the award and compensation of public defender services. New processes will be implemented in 2015 to ensure compliance.

Budget Adjustments

There are no significant budget adjustments for this program.

Expenditure History					
	2012 <u>ACTUAL</u>	2013 <u>ACTUAL</u>	2014 <u>BUDGET</u>	2015 DEPT <u>REQUESTED</u>	2015 <u>BUDGET</u>
SUPPLIES & MATERIALS	660	219	500	500	500
CONTRACT SERVICES	1,096,771	1,096,771	1,360,000	1,158,000	1,158,000
OTHER EXPENSES	20,566	33,777	35,000	13,000	13,000
TOTAL PROGRAM COST	\$1,117,997	\$1,130,767	\$1,395,500	\$1,171,500	\$1,171,500

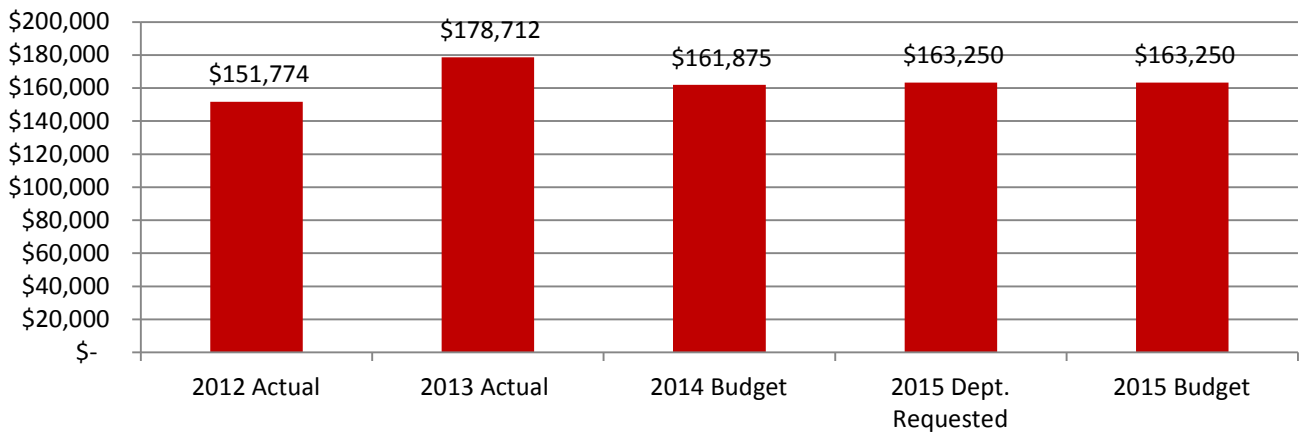
PUBLIC DEFENDER



Revenue History

	2012 <u>ACTUAL</u>	2013 <u>ACTUAL</u>	2014 <u>BUDGET</u>	2015 DEPT <u>REQUESTED</u>	2015 <u>BUDGET</u>
CHARGES/FEES	151,774	178,712	161,875	163,250	163,250
TOTAL PROGRAM COST	\$151,774	\$178,712	\$161,875	\$163,250	\$163,250

PUBLIC DEFENDER



Public Defender

Strategic Outcomes

<u>Indicator</u>	<u>2010 Actual</u>	<u>2011 Actual</u>	<u>2012 Actual</u>	<u>2013 Actual</u>	<u>2014 Target</u>	<u>2015 Target</u>
Percent of respondents who say they feel very or somewhat safe from violent crime	*	49 %	*	49%	*	
Percent of respondents who say they feel very or somewhat safe in their neighborhood during the day.	*	92%	*	92%	*	
Percent of respondents who say they feel very or somewhat safe in their neighborhood after dark.	*		*		*	

Other Key Indicators

<u>Indicator</u>	<u>2010 Actual</u>	<u>2011 Actual</u>	<u>2012 Actual</u>	<u>2013 Actual</u>	<u>2014 Target</u>	<u>2015 Target</u>
Public Defender Cases handled in District Court	835	821	860	800	800	800