



## Economic and Workforce Development

### Issue Analysis

#### Historical Efforts

**Economic Development:** The greater Jackson area possesses many strengths and opportunities that enhance the potential of future economic growth. Our strengths include: proximity to major markets and educational institutions; affordable housing and real estate; and, a high quality of life for residents and visitors; all of which are enhanced by strong economic development organizations. (Jackson County Economic Development Strategic Plan)

The **Enterprise Group of Jackson Inc.** is the primary economic development organization for the greater Jackson area. The Enterprise Group of Jackson, Inc. (EG) was established in 1997 to lead business recruitment and retention in Jackson County. The EG is a private/public partnership organized to promote and coordinate economic development initiatives and create wealth within Jackson County. The EG is comprised of Jackson's leading business organizations.

The Enterprise Group's Economic Development Division (EDD) combines the services of Local Development Finance Authorities, Downtown Development Authorities, and the County's Economic Development Corporation and Brownfield Redevelopment Authority. The EDD provides site selection, development, deal structuring, and tax incentive assistance. The Economic Development Division staffs the following entities:

- Blackman Charter Township Downtown Development Authority/Jackson Technology Park Smart Zone
- Blackman Charter Township Local Development Finance Authority
- Brownfield Redevelopment Authority of Jackson County
- The Economic Development Corporation of Jackson County
- Leoni Township Downtown Development Authority
- Parma--Sandstone Local Development Finance Authority

The EG's Business Success Program is one of the top priorities. The program is specifically used to retain and expand Jackson County businesses. Each year, EDD Staff calls on about 100 businesses, typically accompanied by the Michigan Economic Development Corporation.

<http://www.enterprisegroup.org/>

- **Economic Development Strategic Planning Committee**, a component committee of the **Jackson County Commission** strategic planning initiative, has been working for over five years to implement several economic development



strategies. An e-commerce web site; improved access to building permits and zoning information; along with creation of a [broad based economic development plan](#) for Jackson County are among the successes of this committee over the past five years. The [committee](#) is comprised of representatives from local government, County government, the private sector along with citizen volunteers.

- **[City of Jackson Economic Development Division](#)** (EDD) of the Neighborhood & Economic Operations Department is focused on creating, bringing, expanding and keeping business in the City of Jackson. The EDD's primary goal is to promote Jackson as a business-friendly community by preserving and creating jobs, while improving lesser-developed areas of the City and improving the City's overall tax base. This goal can be met by providing the financial tools needed to support the development and expansion of commercial, mixed-use and industrial businesses.
  
- ***Jackson Citizens for Economic Growth*** brings together people of all ages and backgrounds interested in helping Jackson grow and prosper. They share ideas, foster partnerships with local organizations, and learn practical ways to apply the expertise of economic development professionals. Together, their goal is to make Jackson shine! <http://www.growjackson.com/> **Jackson Citizens for Economic Growth (JCEG)** was formed by a group of citizens. JCEG's mission is to assure the economic health of Jackson County through partnerships with local and governmental agencies. Through partnerships, JCEG can help:
  - ❖ *Facilitate the process for businesses seeking to expand or locate in Jackson County*
  - ❖ *Promote and elevate community programs that will improve the quality of life for our citizens*
  - ❖ *Foster educational development of all our citizens*
  - ❖ *Encourage innovation, creativity and entrepreneurship*
  - ❖ *Instill pride in our community*

**Workforce Development:** The quality of the local workforce is the number one issue in economic development today. Without a proven "pipeline" to prepare its future workforce, a community will be at a distinct competitive disadvantage. Workforce development initiative link education with regional businesses and create learning opportunities for workers at many different stages in their careers. (Jackson County Economic Development Strategic Plan) Several organizations in the community address workforce development as one of their core missions.



- **South Central Michigan Works! (SCMW)** currently leads workforce development efforts in Jackson County. SCMW attracts both job seekers (supply) and businesses (demand) in an effort to facilitate a demand driven approach to workforce development. As businesses identify their needs, SCMW works to supply them with skilled employees. These employees are gathered from a number of pools including dislocated workers, welfare recipients, youth programs, Job Corp, Prisoner Reentry, the elderly, and Veterans. Most in these categories are deemed eligible for additional skill training funded by Workforce Investment Act (WIA) dollars to meet the skill demand for each employer. On the Job Training (OJT), Work Experience (WE), and Incumbent Worker Training (may also be available to bridge the gap in skill as well).
- The **Enterprise Group** of Jackson, Inc. and its partner organizations; the **Jackson Area Manufacturers Association (JAMA)**, the **Academy for Manufacturing Careers (AMC)** and the **Procurement Technical Assistance Center** of South Central Michigan (PTAC), collaborate to provide a one-stop resource to achieve solutions and coordinate business and manufacturing capabilities to promote prosperity, strengthen the economy, stimulate job creation and support business retention and growth. The **Economic Development Division** combines the services of **Local Development Finance Authorities, Downtown Development Authorities, the Jackson County Economic Development Corporation**, and the **Brownfield Redevelopment Authority** of Jackson County. They structure deals, which may include tax breaks, major plant/equipment renovations, construction, and environmental assessments. Through JAMA's AMC, the Enterprise Group operates a Skilled Trades Training Program open to the public, a Technical Apprenticeship Program, and customized training programs in support of and complementary to SCMW programs. They recently completed their pipeline foundation for a K-12 Science, Technology, Engineering and Mathematics (STEM) Youth Educational Pipeline with the additions of Engineering is Elementary (EiE) for K-5th graders, Remotely Operated Vehicles (ROV) for 7th-9th graders, and the launch of Hot Rod U for 9th-12th graders. The AMC and JAMA also sponsor youth programs such as the I Can Make It Camp! and Machining U.

**Stakeholder Analysis:** The groups and organizations listed below are considered key stakeholders for future economic and workforce development activity. This list of stakeholders is not considered exhaustive and will be modified as new stakeholders are identified.

- ❖ *Citizens of Jackson County*
- ❖ *The Enterprise Group of Jackson*



- ❖ *South Central Michigan Works!*
- ❖ *Jackson Citizens for Economic Growth*
- ❖ *Jackson Colleges and Universities*
- ❖ *The Academy for Manufacturing Careers*
- ❖ *Jackson Area Manufacturers Association*
- ❖ *Jackson Area Career Center*
- ❖ *Local businesses*
- ❖ *Local and State government*
- ❖ *Regional seats of government*
- ❖ *Public and private k-12 schools*
- ❖ *Cradle to Career*
- ❖ *The Jackson County Economic Development Coordinating Council*

**Current Reality**

The lists, tables, and charts that follow are a snap shot of the existing economic conditions for Jackson County from which the economic strategic efforts will seek to improve. The top Jackson County Employers, excluding manufacturing are listed below. (Source: April 2012 Enterprise Group Dashboard)

<u>Company Name Business Description</u>	<u>Employees</u>
<i>Allegiance Health System Medical Center</i>	3,620
<i>Consumers Energy Utility Headquarters</i>	2,400
<i>Michigan Department of Corrections Correctional Facilities</i>	2,040
<i>Great Lakes Home Health &amp; Hospice Health and Hospice Services</i>	1,118
<i>Local Government City and County Government</i>	870
<i>Jackson Public Schools Education-Public School</i>	782
<i>Meijer, Inc. (2 locations) Retail/Grocer</i>	755
<i>Jackson Community College Higher Learning Institution</i>	650
<i>Jackson County Intermediate School District Education</i>	500
<i>McDonald's (8 locations) Restaurant</i>	450
<i>Wal-Mart/Sam's Club Retail/Grocer</i>	417
<i>Call Center HR Temporary help services</i>	400
<i>Sears Roebuck Retail/Department Store</i>	300
<i>Spring Arbor University Higher Learning Institution</i>	300
<i>Ganton Countryside Care Center Retirement Community</i>	300
<i>Anesthesia Business Consultants Medical Billing</i>	260
<i>Vista Grande Villa Retirement Community</i>	250
<i>Polly's/Country Market Grocer/Deli</i>	162
<i>Commonwealth &amp; Associates Engineering Services</i>	150
<i>Omni Source Group Recyclable Material Merchant</i>	135



Target Retail/Grocer _____	135
Goodwill Industries Retail-used merchandise _____	131
Kroger Co. Grocer/Deli _____	125

The top Jackson County manufacturers and related companies are listed below. (Source: April 2012 Enterprise Group Dashboard)

<u><i>Company Name Description</i></u>	<u><i>Total Employees</i></u>
<i>Michigan Automotive Compressor (MACI) Compressor and clutch manufacturer _____</i>	740
<i>Eaton Corporation Hydraulic component for aerospace/auto manufacturer _____</i>	598
<i>TAC Manufacturing Automotive component manufacturer _____</i>	590
<i>Dawn Food Products Food processing manufacturer and distributor _____</i>	483
<i>Gerdau/Mac Steel Rolled steel shape manufacturer _____</i>	349
<i>Tenneco Emission and ride control design and manufacture _____</i>	270
<i>Alro Steel Steel, plastic and industrial distributor _____</i>	325
<i>Milso Michigan Seat/Jackson Canvas Special equipment seat design and manufacture _____</i>	235
<i>Melling Tool Oil pump manufacturer _____</i>	255
<i>Adco Products Adhesive/sealant manufacturer _____</i>	230
<i>Midbrook Medical device manufacturer _____</i>	165
<i>Aunt Millie's/Perfection Bakery Commercial baker/retail _____</i>	152
<i>CertainTeed Corporation Exterior vinyl product manufacturer _____</i>	147
<i>Allied Chucker &amp; Engineering Hardware manufacturer _____</i>	144
<i>Production Engineering CNC machining for automotive _____</i>	130
<i>Mid-American Products Plastics manufacturer _____</i>	111
<i>Classic Turning CNC machining for aerospace/medical/automotive _____</i>	110
<i>C. Thorrez Industries Precision-machined metal manufacturer _____</i>	106
<i>Industrial Steel Treating, Co. Metal Heat Treating manufacturer _____</i>	90
<i>Lomar Machine &amp; Tool Co. Automotive component manufacturer _____</i>	88
<i>Orbitform, Inc. Surgical &amp; Medical Instrument manufacturer _____</i>	86

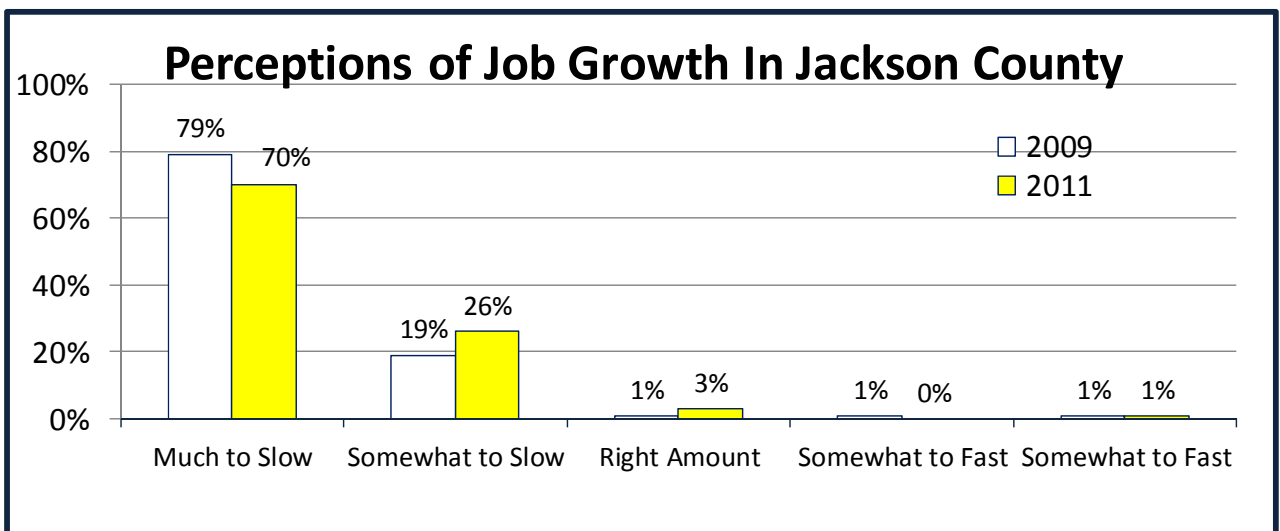
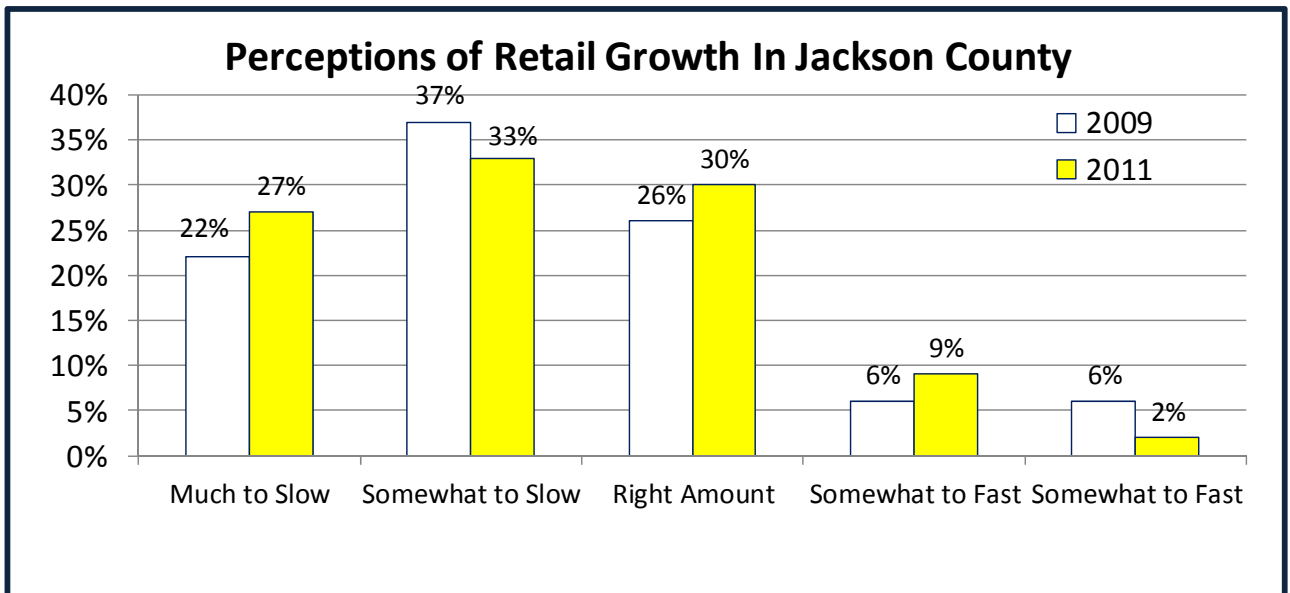
## Unemployment

In 2012 Jackson County “Led the U.S. with a 2.2 percent point decrease in unemployment for the year ending in Feb. 2012”, as reported by the U.S. Bureau of Labor Statistics. (Bloomberg News) Over the period of the previous strategic plan Jackson, Michigan’s unemployment dropped from 9.7% to 8.1%. The Jackson Metropolitan Statistical Area (MSA) ranks 241<sup>st</sup> among 362 MSA’s.



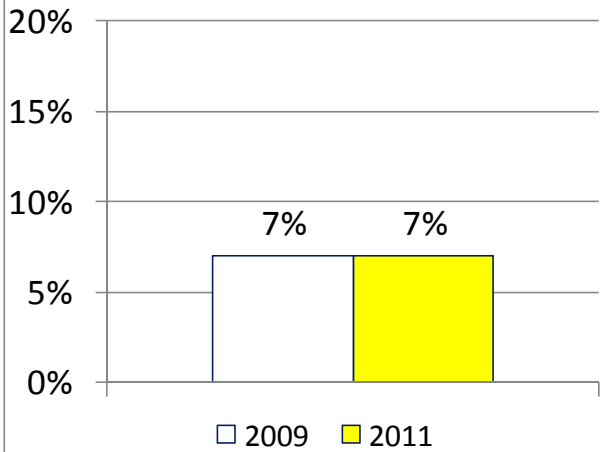
Despite progress in the past few years, perception of retail growth and job growth in Jackson County, by its residents, remains low but shows improvement. In 2011 approximately 30% of County respondents, when asked about the perception of retail growth, said it was the right amount compared to 26% in 2009. Similarly the results in 2011 showed some improvement in citizen's perception of job growth in Jackson.

## National Citizen Survey Results 2011

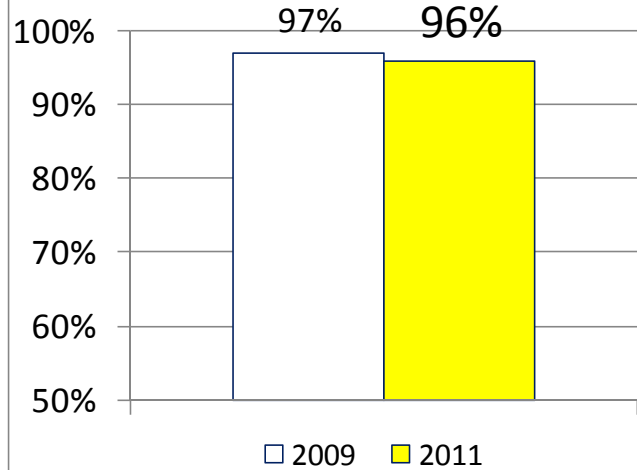




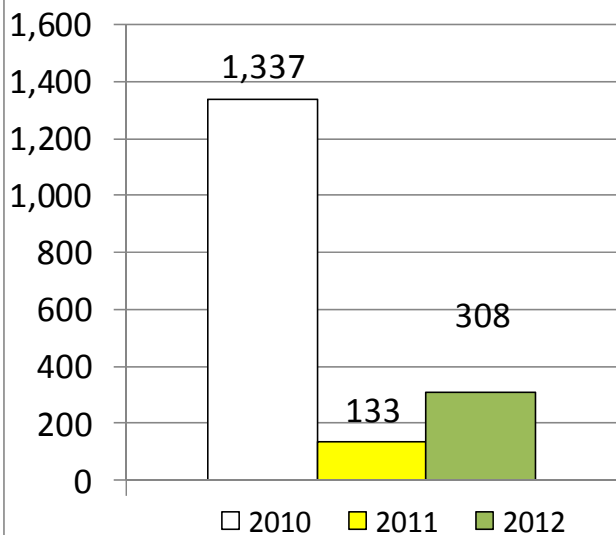
**Citizens who say Employment Opportunities are Good or Excellent**



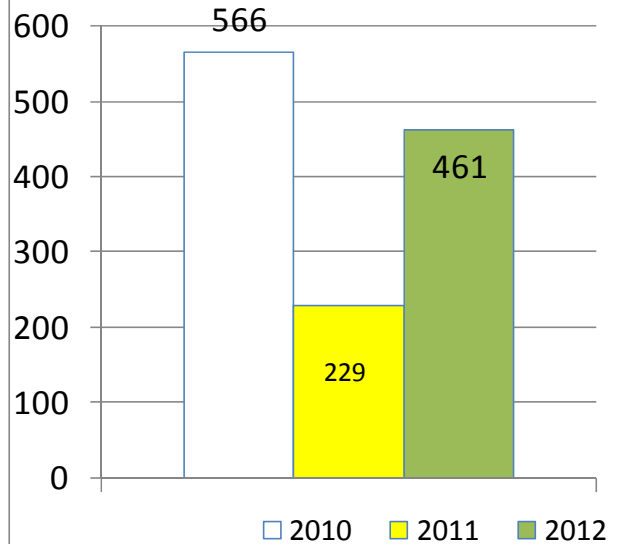
**Citizens who say Speed of Job Growth is Somewhat too Slow or Much too Slow**



**Number of Jobs Retained**



**Number of New Jobs**



**ASSETS:**



Jackson County is an urban area with big-city amenities, strategically positioned along I-94 and US-127 highways, to supply the automotive market and other industries. The [Why Jackson](#) publication on the Enterprise Group of Jackson's website has an excellent summary of Jackson's strengths.

**Source:** "Why Jackson" The Enterprise Group of Jackson, Inc.,  
[http://www.enterprisegroup.org/images/uploads/Jxn\\_County\\_Assets\\_for\\_Regional\\_Marketing\\_July\\_2012.pdf](http://www.enterprisegroup.org/images/uploads/Jxn_County_Assets_for_Regional_Marketing_July_2012.pdf)

## Demographics

Jackson County boasts a diversified manufacturing community with an immediate availability of workers skilled in automotive; medical and aerospace; parts production and assembly.

## POPULATION

According to the US Census, Jackson County's population is 160,248. The City of Jackson has a population of 33,534; and within a 30 mile commute from Jackson County there is a population of 953,660.\*

*\*Includes Branch, Calhoun, Hillsdale, Ingham, Lenawee and Washtenaw Counties*

## MEDIAN HOUSEHOLD INCOME

The median household income in Jackson County is \$42,862.

## LOCATION

Jackson County has consistently been rated one of the 10 most affordable housing markets in the United States. Besides affordable housing, Jackson County offers a less hectic lifestyle, little traffic congestion and housing that is not far from schools, shopping, restaurants, churches and entertainment.

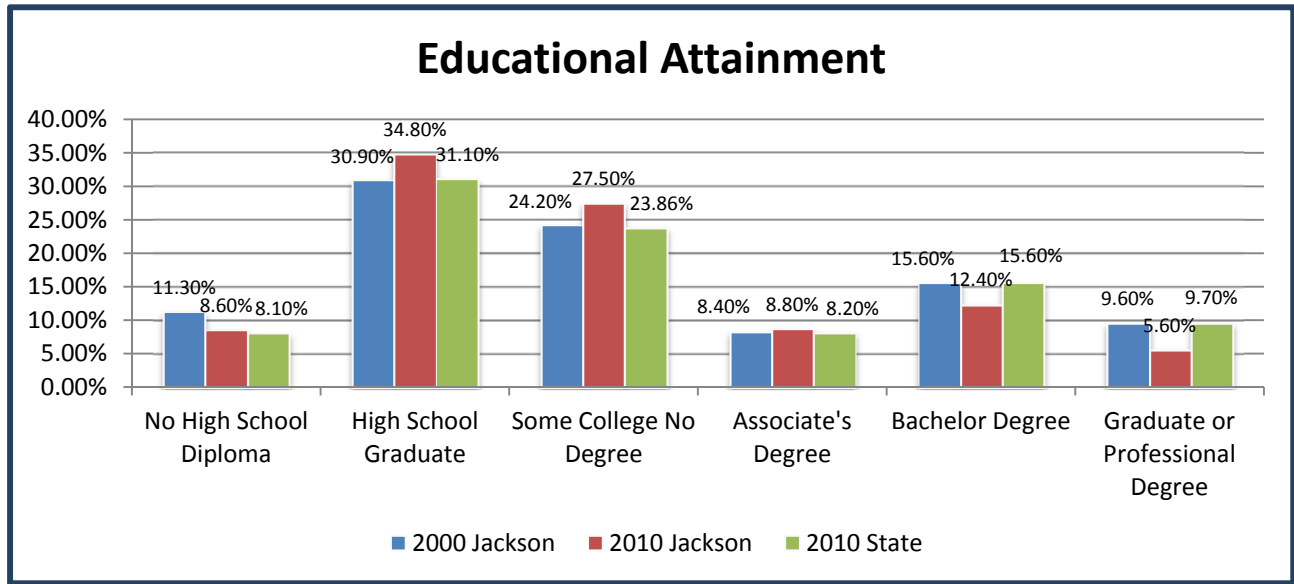
## MEDIAN AGE (2010)

According to the US Census, Jackson County's median age is 39.7, which is a little higher than the state (37.1) and the US (36.6), but is indicative of the experienced work force in Jackson.

## EDUCATION LEVEL JACKSON COUNTY

The population in Jackson County ranks low in educational attainment. Specifically, Jackson County does not retain residents with four year degrees or graduate/professional degrees as shown on the following chart.





### JACKSON COUNTY COST OF LIVING

Jackson County ranks very well in cost of living and affordability. Its residents enjoy affordable housing, food, health care, and transportation.

#### *Jackson County, Michigan Affordability Index*

<u>Category</u>	<u>Jackson</u>	<u>State</u>
<i>Overall</i>	81	90
<i>Food</i>	97	95
<i>Housing</i>	43	n/a
<i>Utilities</i>	104	105
<i>Transportation</i>	99	n/a
<i>Health care</i>	90	n/a
<i>Miscellaneous</i>	91	93
<i>US average</i>	100	100

*Source: Sperling's Best Places, May 2012*

The Detroit MSA is a world center for automotive headquarters operations, research, design, and manufacture. The headquarters of Ford Motor Company, GM, and Chrysler are within 60 miles of Jackson County.

Jackson County is where business intersects with advanced manufacturing, a vibrant economic development initiative and an immense talent pool. The Enterprise Group of Jackson, Inc., One



Jackson Square, Suite 1100, Jackson, Michigan 49201 T: 517-788-4455 F: 517-782-0061  
Website: [www.enterprisegroup.org](http://www.enterprisegroup.org)

## Jackson County Business Community Profile

In addition to many established industries, the area has become a magnet for emerging and rapidly growing sectors such as:

- ✓ *Automotive R&D and Engineering*
- ✓ *High Tech and Alternative Energy*
- ✓ *Life Sciences*
- ✓ *Advanced Manufacturing*

## REGIONAL MANUFACTURING

The Jackson County region has a strong automotive industry sector. There are approximately 260 diverse companies in Jackson and over 600 within a 30-mile radius. Sixty percent of the companies sell products and services to the automotive market. More than 30 companies have diversified into manufacturing medical devices.

### The International Connection

Firms headquartered in Bermuda, Canada, England, France, Germany, India, Ireland, Italy, Korea, Japan, Netherlands, Switzerland and Taiwan find Jackson County a welcoming, low cost location for doing business. The Enterprise Group of Jackson, Inc., One Jackson Square, Suite 1100, Jackson, Michigan 49201 T: 517-788-4455 F: 517-782-0061 Website: [www.enterprisegroup.org](http://www.enterprisegroup.org)

## WORKFORCE

The Jackson County active labor market extends into the adjacent counties of Hillsdale and Lenawee, which is within the South Central MI Labor Force, providing a labor pool of 133,875 and both of which are within a 30-minute commute of Jackson County.

### Jackson County Hillsdale Lenawee

#### Employment Data MSA County

	<i>Jackson</i>	<i>Hillsdale</i>	<i>Lenawee</i>
<i>Labor Force</i>	71,677	18,817	43,434
<i>Employment</i>	66,162	17,192	39,825
<i>Unemployed</i>	5,515	1,625	3,609



*Unemployment Rate*

*7.7%*

*8.6%*

*8.2%*

*Source: Bureau of Labor Market Information & Strategic Initiatives, April 2012*

Census data shows that the lion share of the working Jackson County population enjoy a short commute to work. Of the working population in Jackson County, 60.2% of them work in the same County. An additional 13.9% work in adjoining counties.

## **JOB COUNTS BY COUNTIES WHERE JACKSON COUNTY WORKERS LIVE**

### County Count Share

<i>Total All Jobs</i>	<i>52,904</i>	<i>100%</i>
<i>Jackson County</i>	<i>31,865</i>	<i>60.2%</i>
<i>Ingham County</i>	<i>2,143</i>	<i>4.1%</i>
<i>Lenawee County</i>	<i>1,930</i>	<i>3.6%</i>
<i>Hillsdale County</i>	<i>1,816</i>	<i>3.4%</i>
<i>Wayne County</i>	<i>1,582</i>	<i>3.0%</i>
<i>Washtenaw County</i>	<i>1,411</i>	<i>2.7%</i>
<i>Calhoun County</i>	<i>1,367</i>	<i>2.6%</i>
<i>Oakland County</i>	<i>1,185</i>	<i>2.2%</i>
<i>Eaton County</i>	<i>851</i>	<i>1.6%</i>
<i>Genesee County</i>	<i>787</i>	<i>1.5%</i>
<i>All Other Locations</i>	<i>7,967</i>	<i>15.1%</i>

*Source: U.S Census Bureau, On The Map Application and LEHD Origin-Destination Employment Statistics 2nd Quarter of 2002-2009*

## **Higher Education**

Jackson County enjoys a plethora of institutes of higher education Jackson Community College, Baker College, and Spring Arbor University. These institutions offer a variety of programs that offer trade skill training, associates degrees, bachelor’s degrees, and graduate programs.

### ***Spring Arbor University Enrollment (2012) 2,036***

*Does not include state-wide satellite campus enrollment*

### ***Baker College Enrollment (2012) 2,700***

*State-wide enrollment is 40,000, which includes the Jackson Campus*

### ***Jackson Community College Enrollment (2011) 11,082***

*Includes all Jackson County locations*



## TRAINING JACKSON'S WORKFORCE

In 2005, The Jackson Area Manufacturers Association (JAMA) announced the official launch of the Academy for Manufacturing Careers (AMC), a “unique program that delivers advanced manufacturing skilled trades training through the collaborative effort of JAMA, area manufacturers, multiple educational partners and South Central Michigan Works! The AMC is a U.S. Department of Labor certified Registered Apprenticeship Training Program, a Michigan Regional Skills Alliance, a state-licensed Proprietary Trade School, and a regionally and nationally recognized best practice model for apprenticeship programs and industry-driven training. The AMC offers full apprenticeship program training for CNC machinists, tool and die makers, mold makers, machine builders, machine repair technicians, industrial maintenance mechanics and industrial electricians. The AMC also provides shorter certificate training programs in welding, CNC machining, and machine maintenance and troubleshooting. A majority of courses offered via the apprenticeship and certificate programs include options for earning college credit aligned to one or more associate degrees.

Beyond all of the standardized course offerings, the AMC excels in the design and delivery of customized training created to fill the specific needs of area companies, in a cost-effective, flexible, timely solution.

In addition to adult training, the AMC also runs a number of area youth programs, including the popular I Can Make It Camp, a summer overnight camp for 4th-6th graders, and Machining U, a manufacturing summer day camp for 7th-10th graders. New youth programs began during the 2011-2012 school year, including Engineering is Elementary for K-5th graders and Hot Rod U, which gives 9th-12th grade students the opportunity to design and build a street-legal hot rod from the ground up.

The AMC has handled over 2,000 skilled trades training class registrations serving over 2,500 adult registrants and nearly 70 area companies. Within those numbers are over 165 apprentices and journeyman graduates. The Enterprise Group of Jackson, Inc., One Jackson Square, Suite 1100, Jackson, Michigan 49201 T: 517-788-4455 F: 517-782-0061 Website: [www.enterprisegroup.org](http://www.enterprisegroup.org)

## THE JACKSON COUNTY ADVANTAGE

Whether you are a resident, visitor or prospective new business; Jackson County has a multitude of assets and advantages that have place-making and business-advantage qualities.

- Home to two certified business parks, including Jackson Technology Park SmartZone<sup>SM</sup>, one of only 15 state business parks designated as a SmartZone<sup>SM</sup> by the Michigan Economic Development Corporation.



- Six Industrial Parks with more than 1,000 acres of developed land.
- Port Lansing, Foreign Trade Zone #275, expanded to include Jackson County and seven other mid-Michigan counties, focusing on importing and exporting machinery and equipment. Jackson County is also included in Port of Battle Creek – Foreign Trade Zone #43 to assist local business with trade-related needs.
- An expedited public permitting process with all local units of Jackson County Government [www.builditjackson.com](http://www.builditjackson.com)
- Jackson County Government is divided into 19 townships, the City of Jackson, and six villages. Twelve county commission districts govern the county. There are six additional elected county officials. Seven elected officials govern the City of Jackson. Each township elects five to seven officials, and each village generally elects nine officials, which include members of the governing board.
- Creating valuable partnerships to attract businesses and to promote community goodwill and sustainable economic activities.
- Food System Economic Partnership (FSEP) exists to catalyze change in the food system of southeastern Michigan. FSEP stimulates and supports change in the food system of our region by working with and developing opportunities for the entrepreneurial community. FSEP provides diverse food system entrepreneurs with access to market information and tools, business development support, educational opportunities and access to a growing network of experts and resource providers.

## HEALTH CARE

Jackson's assortment of health care agencies, offer a complete continuum of care for people of all ages – from prenatal care to hospice care.

**Allegiance Health System** is a five-time recipient of Thomson Reuters 100 Top Hospitals award and has also earned national recognition for exceptional quality and safety. Allegiance Health features a 411-bed hospital, a long-term acute care hospital, a network of primary and specialty care physicians and a broad range of inpatient and outpatient services. Allegiance Health also provides open-heart services at its Heart and Vascular Center along with coordinated care for medical specialties involving bones, muscles, brain and nerves at the Specialty Center.

**Great Lakes Caring (GLC)** is one of the Midwest's premier providers of a continuum of care, consisting of home health and hospice care, as well as home medical equipment. GLC care services are delivered with an unparalleled level of quality by an exceptionally dedicated team of health care professionals to more than 6,000 patients across Michigan, Indiana and Ohio. GLC takes an intimate approach to caring for patients, along with their relentless pursuit of



advanced health care technologies and innovative care services, which drives more than 2,000 loyal physicians to entrust their patients' care to Great Lakes Caring.

Great Lakes Caring was named to the Inc. 5000 list of the fastest-growing private companies in America consistently in 2007, 2008 and 2009.

**Blake Woods Medical Park Surgery Center** is a state-of-the-art ophthalmology outpatient surgery center located in Jackson. Blake Woods Surgery Center offers a competitive, efficient and well-managed health care option to patients in the mid-Michigan area. The 12,000 square foot outpatient facility has three surgical suites and procedure suites, as well as private recovery areas. With outstanding facilities, expert and caring staff, respected and talented physicians and state-of-the-art technology, Blake Woods delivers high quality medical care in a timely and cost-effective manner. The Enterprise Group of Jackson, Inc., One Jackson Square, Suite 1100, Jackson, Michigan 49201 T: 517-788-4455 F: 517-782-0061 Website: [www.enterprisegroup.org](http://www.enterprisegroup.org)

## EG AFFILIATE ORGANIZATIONS

The Enterprise Group of Jackson, Inc. (EG) is a one-stop economic development agency for Jackson County that brings vital organizations together on behalf of Jackson County:

- The Jackson Area Manufacturers Association
- The Academy for Manufacturing Careers
- EG Community Ventures Corporation
- The Procurement Technical Assistance Center
- The Economic Development Division, which staffs:
  - The Jackson County Brownfield Redevelopment Authority
  - The Jackson County Economic Development Corporation
  - The Blackman Charter Township Downtown Development Authority
  - The Blackman Charter Township Local Development Finance Authority
  - The Parma-Sandstone Local Development Finance Authority
  - The Leoni Township Downtown Development Authority

## LOCATION AND TRANSPORTATION INFRASTRUCTURE

Jackson County provides close and central proximity to major Midwest travel and business destinations. Located 60 miles from the city of Detroit, Jackson County is also only 200 miles from Chicago. The Jackson County area is an easy commute for employees and business travelers. Well-maintained highways, toll-free interstates and tree-lined city streets help keep all of Jackson County connected and accessible. Amtrak service links Jackson County to Chicago,



a number of cities in Michigan and 450 other destinations in the U.S., with the potential for an eventual high-speed rail system.

**Jackson County Airport-Reynolds Field** is home to over 100 general aviation aircraft ranging from single engine planes to business/corporate jet aircraft. The Airport is home to many businesses including the Jackson Community College Flight School. **Detroit Metropolitan Airport (DTW)**, located 60 miles from Jackson County, offers multiple direct commercial flights to all major international cities, ranked #11 nationally and is the major Delta hub. Annual business passengers equal 19,996,045 and annual international passengers equal 2,973,308. Primary international destinations are Amsterdam, Frankfurt, London, Paris, Toronto, and Tokyo.

## RANKINGS

Jackson County has accrued some impressive recognition for its economic development efforts. Listed below are some of the recognitions given to Jackson County organizations.

*2013 Jackson County tied 2<sup>nd</sup> in the nation by Site Selection Magazine for metropolitan areas less than 200,000, for the number of business development projects through the Governor's Cup competition...Site Selection Magazine, March 2013*

*2012 Jackson County "Led the U.S. with a 2.2 percent point decrease in unemployment for the year ending in Feb. 2012", according to the U.S. Bureau of Labor Statistics...Bloomberg News*

*2011 Allegiance Health receives national recognition as the award recipient of the Foster G. McGaw for excellence in community service in 2011.*

*2011 "One of the nations' top 10 metropolitan areas of less than 200,000 populations as a place to do business" ...Site Selection Magazine*

*2010 Armory Arts Village recognized as one of "10 of the world's most unusual apartments" ...MSN Real Estate*

*2008 Jackson receives Smart Zone designation*

*2007 Armory Arts Village and the City of Jackson received the Cool Cities Neighborhood in Progress Project of the Year*

*2004 Jackson designated as a "Cool City"*



*2004 Jackson named 4th best golf value in America...Golf Digest Magazine*

*2001 Jackson is All-American City Finalist*

*2000 Ella Sharp Museum ranked 1st in Small Museums and 2nd in Art Galleries...Michigan's Best Treasure Awards, Reader's Choice Award*

*1997 Jackson rated #14 for best place to play golf ...Golf Digest Magazine*

*Dahlem Environmental Center ranked 3rd among Michigan's nature centers*

*Cascades Falls Park ranked #1 Sledding Hill in Michigan*

*Phyllis Haehnle Memorial Sanctuary rated 4th best bird watching site in Michigan...Current as of March 21, 2013*

## **VISION**

The overall goal for the Economic Development Strategic Plan group is to improve the overall business climate of the greater Jackson area by reviewing, prioritizing and supporting the implementation of the Jackson County Economic Development Strategic Plan Recommendations. The economic development strategic plan committee has revised the vision statement to:

*Our vision is to attract new business and expand existing businesses by retraining the workforce in in-demand fields and offering these businesses incentives to come to Jackson, and stay in Jackson by implementing the Jackson County Economic Development Plan Recommendations.*

The action plans for the Economic Development Strategic Plan goal are shown on the following pages.





**Strand:**  
**Economic and Workforce Development**

**Goal:**  
**Implement the recommendations of the Jackson County Economic Development Strategic Plan**

Measurements of Success for the Goal  
 Progress in implementing the various recommendations of the Plan coupled with periodic review of key economic indicators  
 Goal (Long Version): **To improve the overall business climate of the greater Jackson area by reviewing, prioritizing and supporting the implementation of the Jackson County Economic Development Strategic Plan Recommendations**

Strategy							
Activities	Resources Needed (e.g. Cost, Equipment)	Timeline		Person/Entity Responsible & Involved	Measurable Outcome/ Evidence of Success		
		Start Date	End Date		Description	Present	Target
<b>Select Economic Coordinating Council (ECC)</b>	Selection decisions by 2020 & County Strategic Teams	4/1/2013	4/30/2013	2020 and County SIT Teams	Broad-based community council selected and meeting schedule set		
<b>Continue business retention/expansion effort focused on existing base industries; utilities, manufacturing, retail and education</b>	Existing Enterprise Group efforts augmented by community leader	Ongoing	None	Economic Development Coordinating Council	Enterprise Group Dash Board reports and coordination with steering committee(s)		



<p><b>Support creation of easily accessible, timely, accurate and relevant data to assist business attraction efforts</b></p>	<p>involvement  Existing Enterprise Group efforts plus ECC</p>	<p>Spring/Summer 2013</p>	<p>Spring/Summer of 2013</p>	<p>Economic Development Coordinating Council</p>	<p>Enterprise Group Dash Board and coordination with Coordinating Council</p>		
<p><b>Collaborate with community and business sectors to create a “Culture of Education” that provides and educated and skilled workforce, meeting the needs of the business community</b></p>	<p>Coordination and liaison with Education Committee</p>	<p>Spring/Summer 2013</p>	<p>Spring/Summer 2013</p>	<p>Economic Development Coordinating Council</p>	<p>Increase in certification and graduation rates, employment rates and median household income</p>		
<p><b>Maintain or improve public services that support Economic development including: Airport, Community Development, Land Assembly, Recreation and Parks, Corridor Improvement, Road infrastructure,</b></p>	<p>Selection of sub-committee by 2020 and ECC</p>	<p>Spring/Summer 2013</p>	<p>Spring/Summer 2013</p>	<p>Economic Development Coordinating Council</p>	<p>Regular meeting of sub-committee plus analysis of improvements of infrastructure</p>		



<b>Brownfield properties, Work Force Development, Zoning/Permitting &amp; others</b>							
--	--	--	--	--	--	--	--