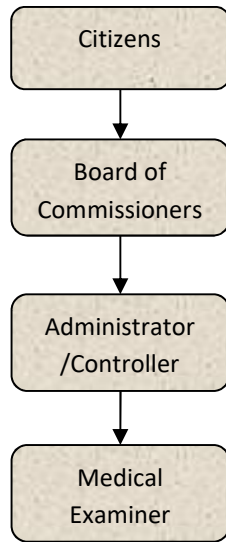


Medical Examiner



Activities

It is the duty of this office to investigate in certain instances the cause and manner of death within the county due to acts of violence, negligence or omission of a criminal nature and/or threats to protect public health.

The services of pathology assistants, forensic pathologists, forensic dentists, body removal services, field investigators, histology, etc., are either contracted or are on a fee for service basis.

All service providers work on an on-call basis and respond when needed, coordinating their efforts to be most effective.



Mission Statement

It is the mission of this office to complete an efficient, professional and dignified investigation of any death reported to this office which falls under the guidelines set forth by the State of Michigan and having occurred within the County of Jackson in order to determine cause and manner of death.

Programs

It is the duty of this office to investigate in certain instances the cause and manner of death within this county due to acts of violence, negligence or omission of a criminal nature and/or threats to protect public health.

Strategic Plan Impact

✓ Safe Community

This is a State mandated office which has a direct impact on the safety of the community as we are responsible for investigating sudden & unexpected deaths. For example, the information gathered provides direct support for prosecution in criminal matters, or can be provided to families when the potential for a genetic problem is identified, therefore possibly saving lives in the future. Our office by and through our investigations prevents repeat injuries and works to identify any potential threat to the public health.

✓ Healthy Community

We help to provide critical and time sensitive information regarding the deaths in the community to protect the health and welfare of our citizens as well as establishing trends to be addressed to promote a healthier community.

Accomplishments

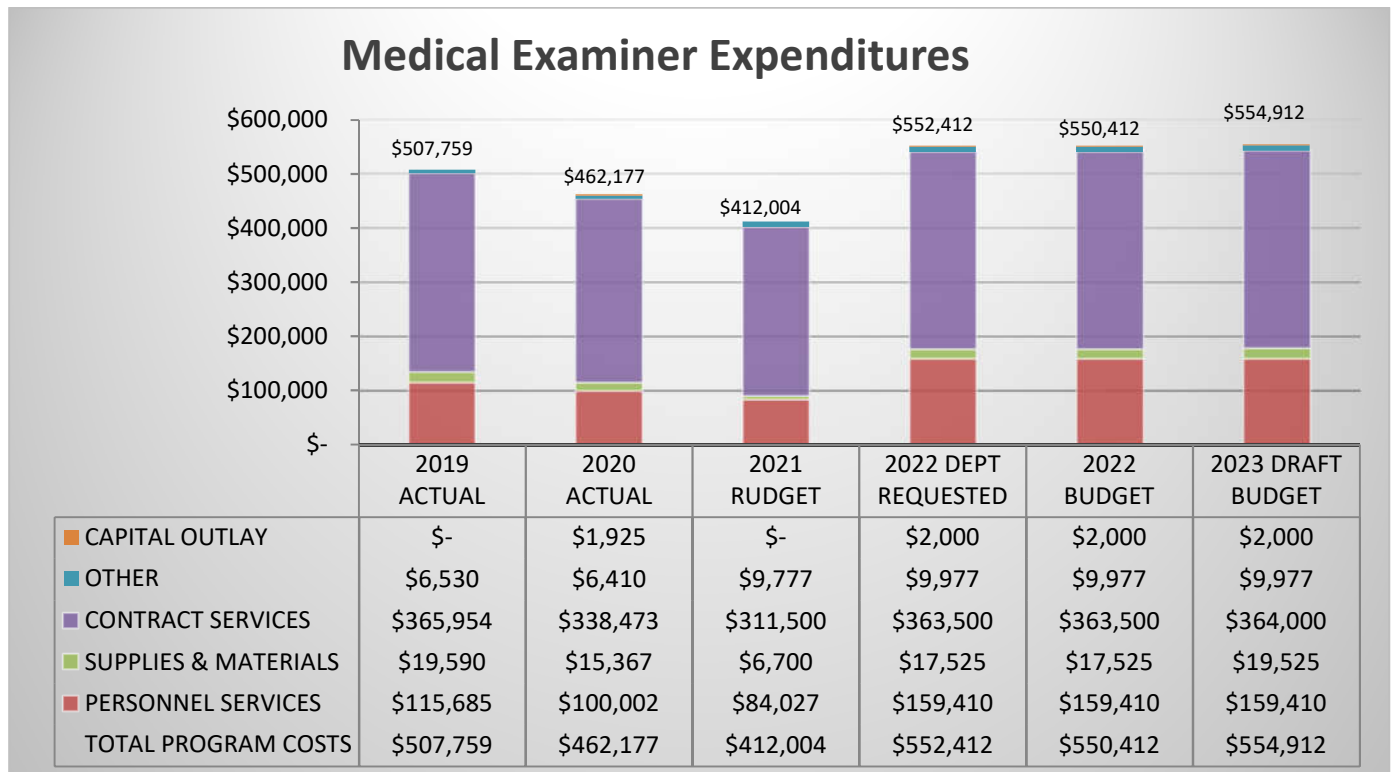
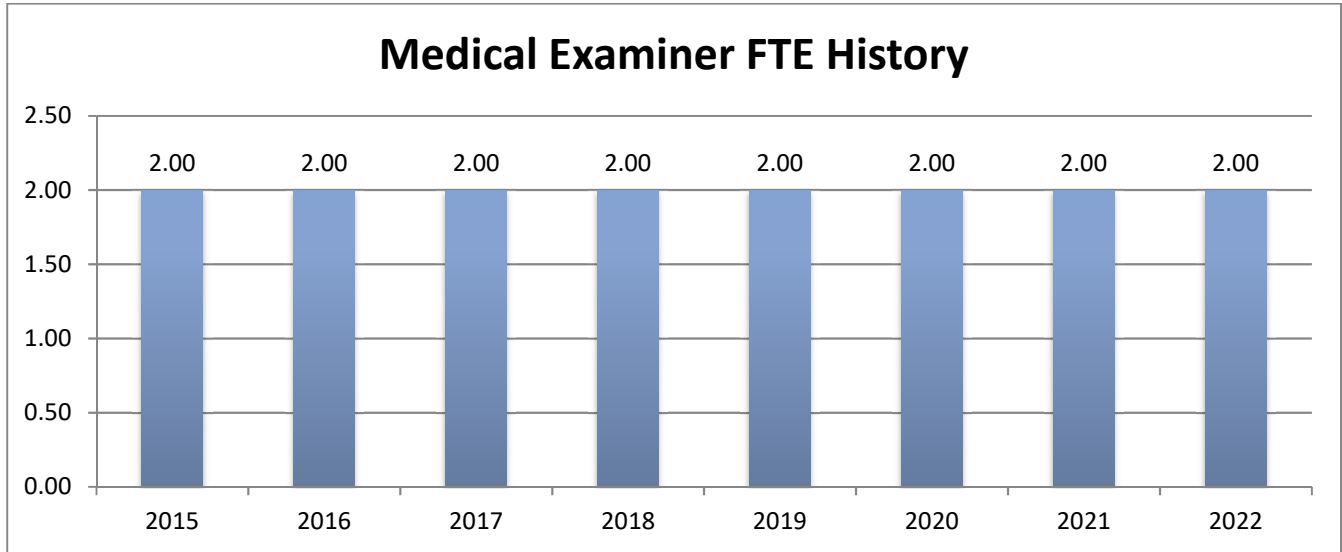
- ✓ In March of 2019 the County of Jackson opened its own morgue facility. This endeavor was taken on following the closing of the autopsy suite at Henry Ford Allegiance Health. In early May we took in our first cases. The new facility consists of office space, shower/locker area, bathroom, walk-in refrigeration unit with a freezer unit and autopsy suite.

Budget Adjustments

Effective July 1, 2020, an agreement with Lenawee County was made where in exchange for using Jackson County Morgue facilities, Jackson County would share their full time staff person. The FTE chart below shows the reduction of FTE from one full time staff to part time staff. In addition, there is a nominal

Medical Examiner

amount charged to Lenawee County for rent which can be identified in the Medical Examiner Revenues chart under Other Revenue.



Medical Examiner

Medical Examiner Revenues



	2019 ACTUAL	2020 ACTUAL	2021 BUDGET	2022 DEPT REQUESTED	2022 BUDGET	2023 DRAFT BUDGET
OTHER REVENUE	\$-	\$2,486	\$19,160	\$19,160	\$19,160	\$19,160
INTERGOVERNMENTAL	\$-	\$238	\$-	\$-	\$-	\$-
CHARGES/FEES	\$105,743	\$145,005	\$105,750	\$105,750	\$105,750	\$105,750
TOTAL PROGRAM REVENUE	\$105,743	\$147,729	\$124,910	\$124,910	\$124,910	\$124,910



This page intentionally left blank.