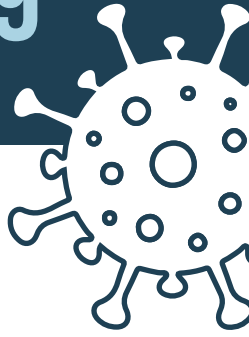




# MDHHS EPIDEMIC ORDER OCT. 9



## Limits on attendance at residential gatherings.

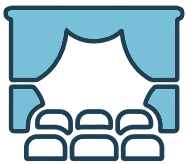
INDOORS: UP TO 10 PERSONS

OUTDOORS: UP TO 100 PERSONS

- Indoor gatherings of up to 10 persons and outdoor gatherings of up to 100 persons at a residence are permitted (face coverings are strongly recommended).

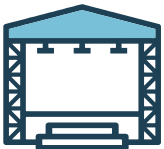
## Limits on attendance at non-residential venues.

INDOORS



- Indoor gatherings of up to 10 persons occurring at a non-residential venue are permitted provided each person at the gathering wears a face covering.
- Indoor gatherings of more than 10 and up to 500 people occurring at a non-residential venue are permitted only to the extent that the organizers and venue:
  - FOR FIXED SEATING: limit attendance to 20% of seating capacity of the venue.
  - WITHOUT FIXED SEATING: limit attendance to 20 persons per 1,000 square feet in each occupied room.
- Require that each person at the gathering wear a face covering.

OUTDOORS



- Outdoor gatherings of up to 100 persons occurring at a non-residential venue are permitted provided that each person wears a face covering.
- Outdoor gatherings of more than 100 and up to 1,000 persons occurring at a non-residential venue with fixed seating are permitted only to the extent that the organizers and venue:
  - FOR FIXED SEATING: limit attendance to 30% of seating capacity.
  - WITHOUT FIXED SEATING: limit attendance to 30 persons per 1,000 square feet, including within any distinct area within the event space.
- Require that each person at the gathering wear a face covering.

“Gathering” means any occurrence where two or more persons from more than one household are present in a shared space. Except for incidental gatherings in a shared space, all gatherings must include 6 feet of social distance between households.



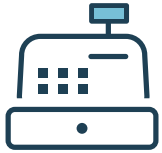
## Face coverings are still required.

Businesses, government offices, schools, child care organizations, and other operations must not allow indoor gatherings of any kind unless they require individuals to wear a face covering. These entities may not assume that someone who enters the business without a face covering falls in one of the exceptions; but may accept an individual’s verbal representation that they are not wearing a face covering because they fall within a specified exception. Exceptions can be found within the Oct. 9, 2020, Epidemic Order at [Michigan.gov/Coronavirus](https://www.michigan.gov/Coronavirus).

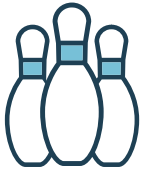
Region 6, the Traverse City region, has slightly less strict rules, which can be read in the MDHHS Oct. 9, 2020, Epidemic Order at [Michigan.gov/Coronavirus](https://www.michigan.gov/Coronavirus).



## Capacity Limitations

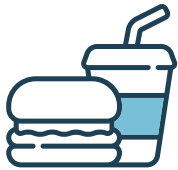


- Gatherings at public facilities, such as a retail store, library or museum, may not exceed 50% total occupancy limits.
- Gatherings at recreational sports and exercise facilities, such as gyms, fitness centers, recreation centers, bowling centers, roller and ice rinks, and trampoline parks, may not exceed 25% of total occupancy limits or are not allowed if it is not possible to maintain a distance of six feet between workout stations.
- Gatherings at professional sports and entertainment facilities, including arenas, cinemas, concert halls, performance and sporting venues, stadiums and theaters, are allowed only if the venue can ensure there is six feet of distance between patrons not of the same household.
- Gatherings at outdoor pools must not exceed 50% of capacity limits, and at indoor pools must not exceed 25% of capacity limits.
- Gatherings at non-tribal casinos may not exceed 15% of total occupancy limits.
- Workplace gatherings are prohibited under the following circumstances: it is not necessary to perform job duties; employees not wearing face coverings cannot maintain six feet of distance from others; employees not wearing face coverings occupy the same shared space; if they include any person who is experiencing COVID-19 symptoms or who is subject to a CDC recommendation to isolate or quarantine.



## Food Service Establishments

### INDOOR COMMON AREAS AND SEATING



- Must maintain six feet of distance between each party.
- Must not exceed 50% of normal seating capacity.
- Close indoor common areas in which people can congregate, dance, or otherwise mingle.
- Prohibit indoor gatherings anywhere alcoholic beverages are sold for consumption onsite, except for where parties are seated and separated from one another by at least six feet, and do not intermingle.



## Organized Sports

### FACE COVERINGS AND DISTANCE

- Athletes must wear face coverings (except when swimming) or consistently maintain six feet of distance from others.
- Follow live audience limits (two per player or as described in attendance limits).
- No concession sales.
- Follow additional guidance from MDHHS.

To read the complete MDHHS Oct. 9, 2020, Epidemic Order, visit [Michigan.gov/Coronavirus](https://www.michigan.gov/Coronavirus).  
Questions or concerns can be emailed to [COVID19@michigan.gov](mailto:COVID19@michigan.gov).

Michigan Department of Health and Human Services (MDHHS) has issued this order under a law first enacted by the Michigan Legislature after the Spanish Flu of 1918, specifically to deal with epidemics. This gives the MDHHS director broad authority to take actions by emergency order to protect the public health during an epidemic. To reduce confusion following the recent Michigan Supreme Court decision, MDHHS issued orders following existing executive orders as much as possible under the different law to prevent and control the spread of COVID-19.